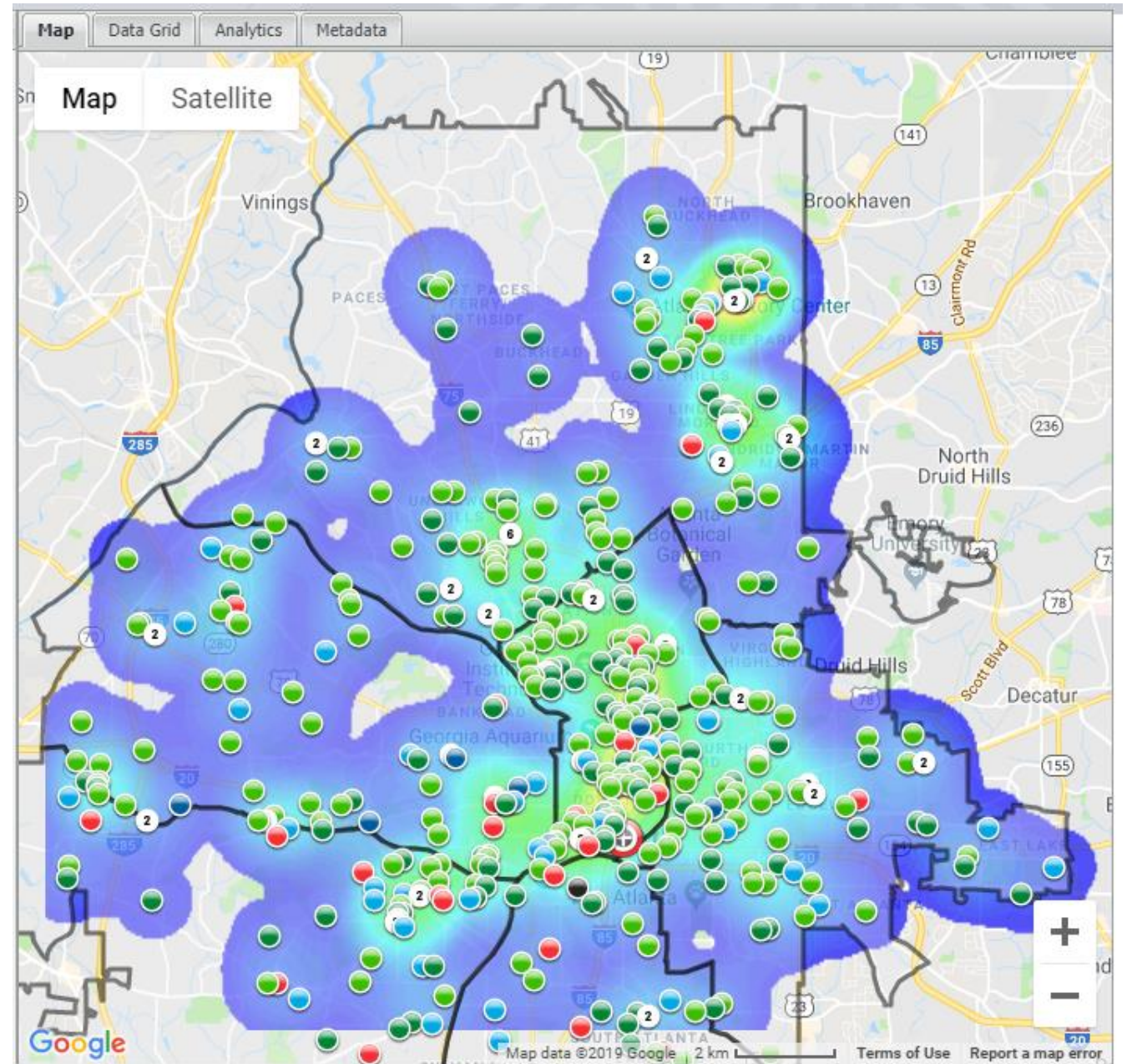


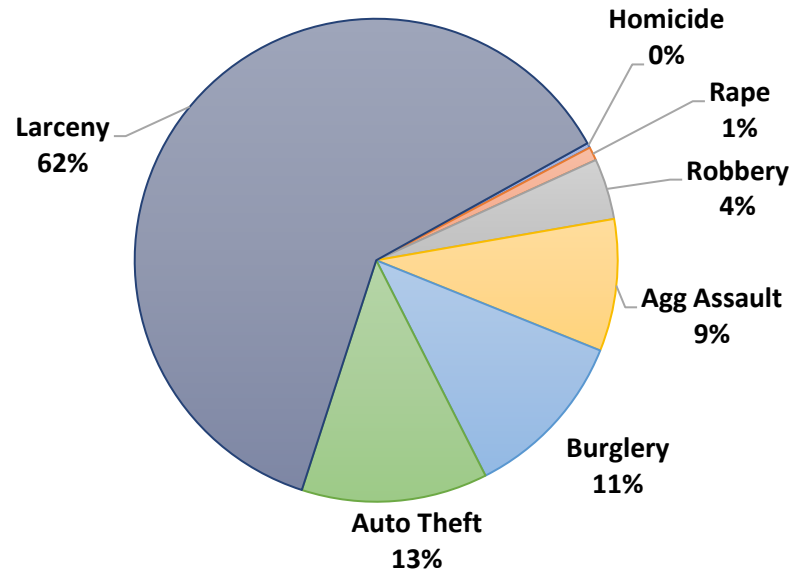
Crime Heatmap – 2019

- Map available to public
- <http://www.atlantapd.org/community/community-crime-map>
- Clustered on Major Roadways
- More prevalent in commercial areas



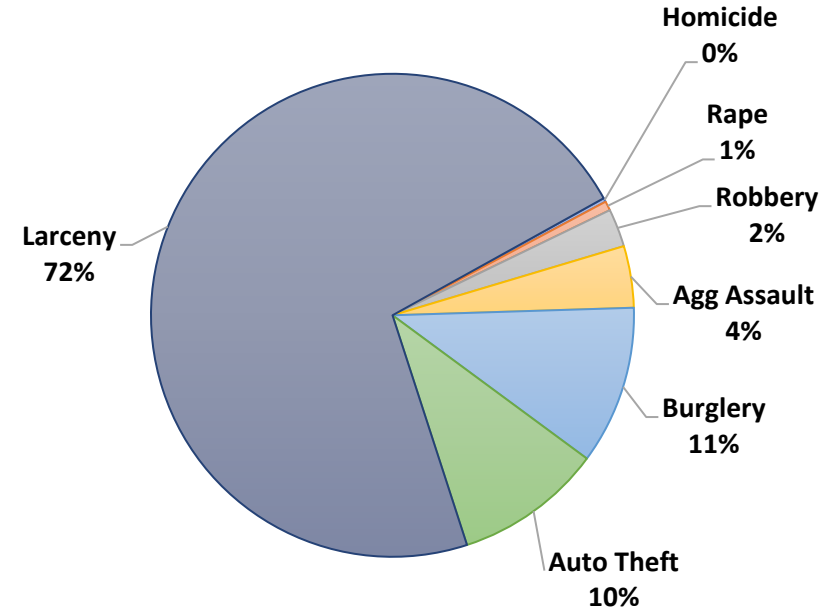
Crime by Type – 2018*

Citywide Crime by Type - 2018



CITY-WIDE

Zone 2 Crime by Type - 2018



ZONE 2

- Higher larceny in Buckhead than citywide
- Less aggravated assault in Buckhead
- Less auto theft in Buckhead than Citywide
- Zone 2 crime ~ 21% of overall Citywide crime

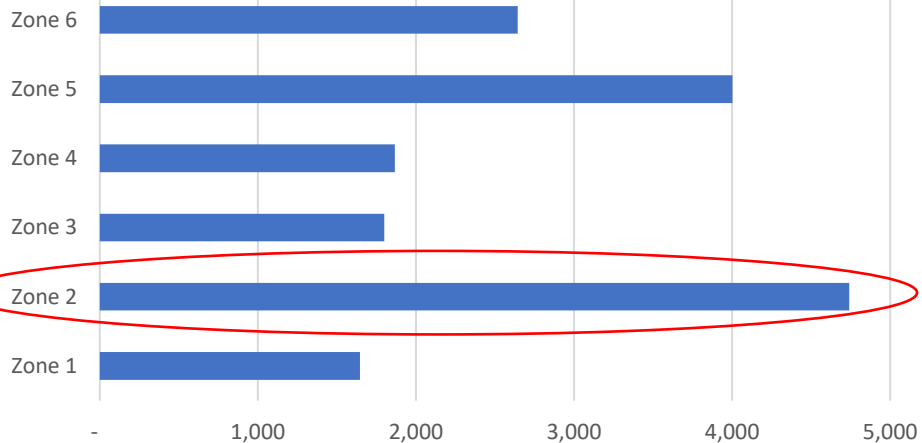
*Source: APD Unified Crime Reports

How Zone 2 Stacks Up Against other Zones – 2018*

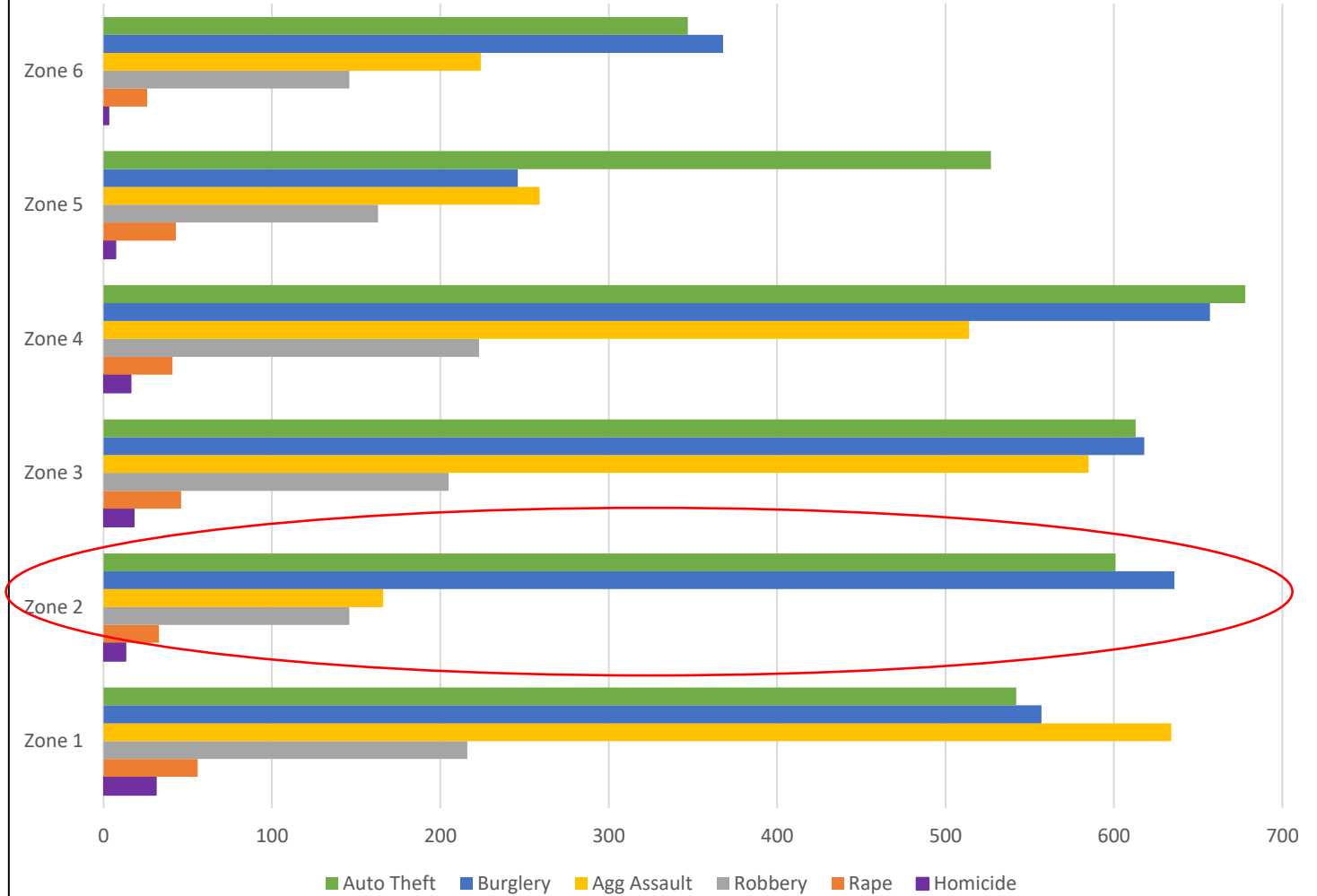
Zone 2

- Aggravated Assault lowest in City
- Larceny highest in City
- Burglary second highest in City
- Auto theft third highest in City

Larceny by Zone 2018



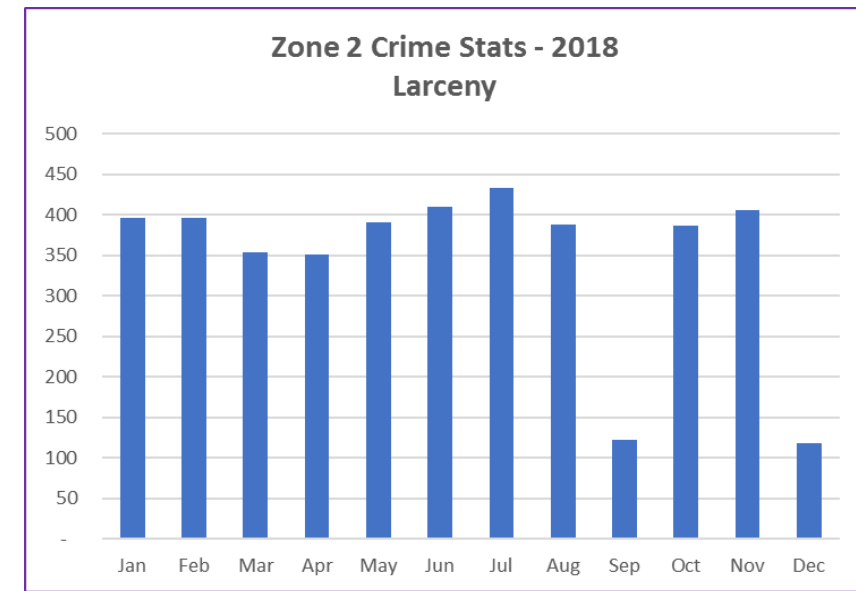
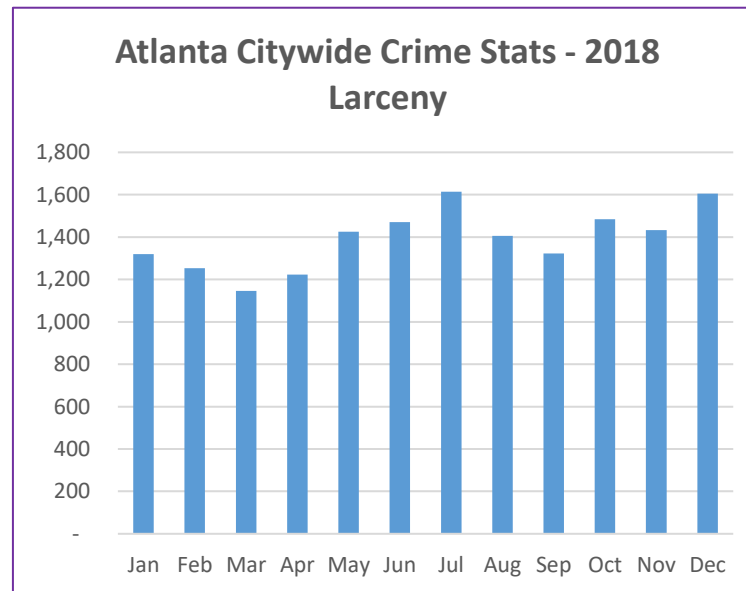
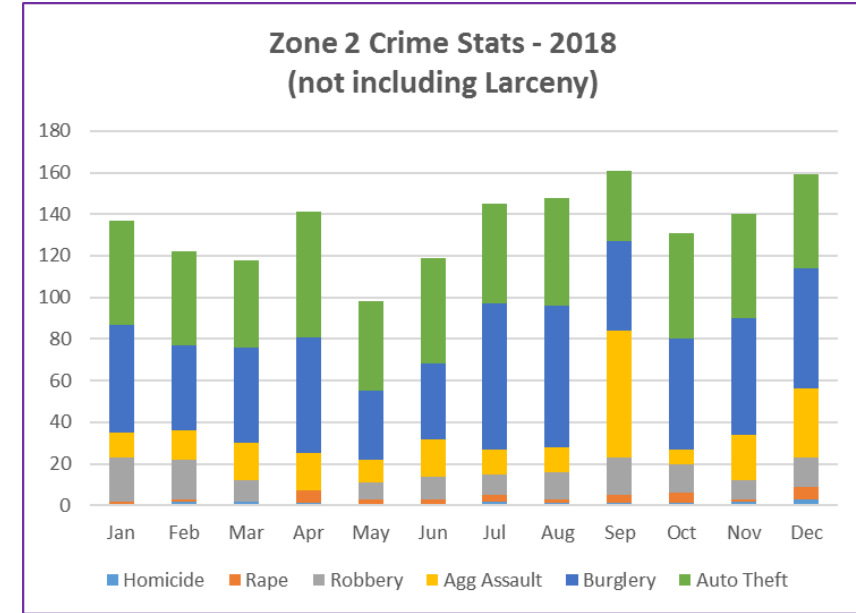
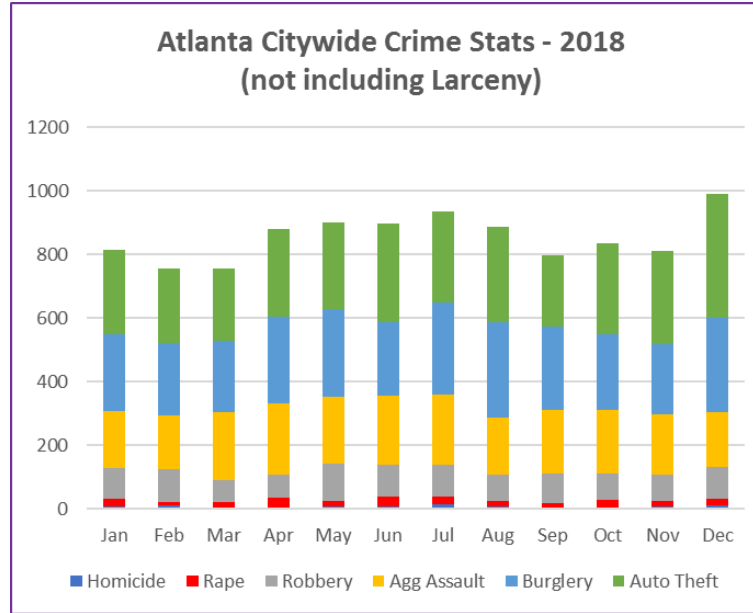
Crime by Zone 2018



*Source: APD Unified Crime Reports

Crime Trends by Month – 2018*

- Similar crime breakdown citywide and zone
- Similar seasonal trend in zone and Citywide
- Summer/warmer weather = higher crime generally
- Summer increase trend less prevalent in Buckhead



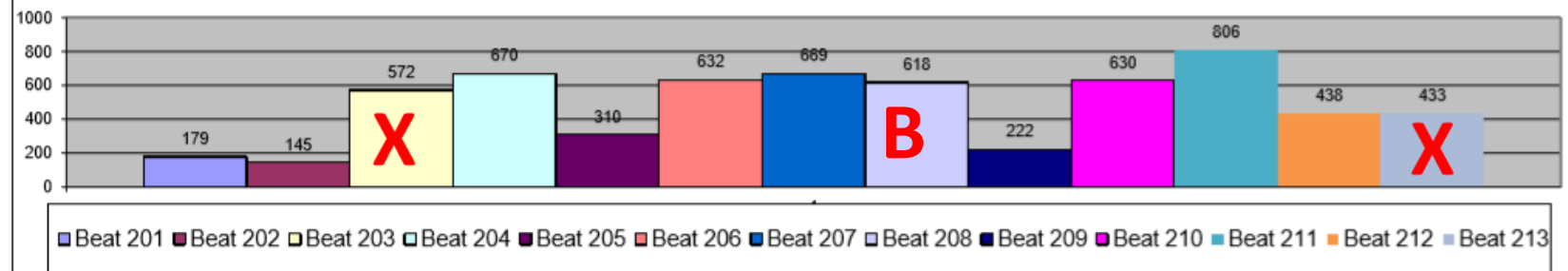
Zone 2 Crime – 2018

- Crime up 7% overall
- Crime distributed across beats – difficult to handle
- **X** beats being removed from zone
- **B** - Commercial Core
- Crime down
 - Rape
 - Ped Robbery
 - Robbery – commercial
 - Larceny - non vehicle
 - Auto theft
- Crime Up
 - Homicide
 - Robbery – Residence
 - Aggravated Assault
 - Burglary – Residence
 - Burglary - Non-Res

Crime Briefing - Zone Two
 Week #52
 Prepared by
 Tactical Crime Analysis Unit



Year To Date																													
1-Jan-18															to			29-Dec-18											
Total 2018															6324			Total 2017			5893			% Change			7%		
COMPSTAT Numbers																													
Beats	201	202	203	204	205	206	207	208	209	210	211	212	213	Total 2018	Total 2017	% Change													
Homicide	1	0	1	1	0	3	2	0	1	0	0	4	0	13	7	85.7%													
Rape	5	0	5	1	1	4	2	2	1	1	2	3	3	30	31	-3.2%													
Robbery-Pedestrian	3	2	5	2	4	12	10	5	2	9	22	10	10	96	137	-29.9%													
Robbery-Commercial	0	1	7	2	1	0	0	0	2	0	6	4	0	23	42	-45.2%													
Robbery-Residence	1	1	0	3	1	2	6	1	0	0	2	0	1	18	10	80.0%													
Agg. Assault	5	2	9	8	9	13	10	11	2	13	23	29	15	149	140	6.4%													
Burglary-Residence	24	10	26	25	27	9	64	6	18	20	76	45	20	370	327	13.1%													
Burglary-NonRes	10	3	27	11	5	21	36	11	4	9	45	86	6	274	171	60.2%													
Larceny-From Vehicle	74	88	354	279	190	363	370	290	139	172	262	134	254	2969	2598	14.3%													
Larceny-Non Vehicle	44	21	69	290	43	137	91	238	42	363	279	76	79	1772	1817	-2.5%													
Auto Theft	12	17	69	48	29	68	78	54	11	43	89	47	45	610	613	-0.5%													
Grand Totals														6324	5893	7.3%													
2018 Beat Totals	179	145	572	670	310	632	669	618	222	630	806	438	433																
2017 Beat Totals	176	138	680	538	245	564	562	554	181	709	733	427	386																
% Beat Change	1.7%	5.1%	-15.9%	24.5%	26.5%	12.1%	19.0%	11.6%	22.7%	-11.1%	10.0%	2.6%	12.2%																



Zone 2 Crime Trends – 2019

- Crime down 5% overall
- Crime distributed across beats – difficult to handle
- **X** beats being removed from zone
- Crime down
 - Robbery - Pedestrian
 - Robbery - Residence
 - Burglary - Nonresidence
 - Larceny - from vehicle
 - Larceny – non-vehicle
- Crime Up
 - Rape
 - Robbery – commercial
 - Aggravated Assault
 - Burglary - residence
 - Auto Theft

Crime Briefing - Zone Two
 Week #8
 Prepared by
 Tactical Crime Analysis Unit



Year To Date																		
1-Jan-19 to 23-Feb-19																		
Total 2019	910													Total 2018	961		% Change	-5%
COMPSTAT Numbers																		
Beats	201	202	203	204	205	206	207	208	209	210	211	212	213	Total 2019	Total 2018	% Change		
Homicide	0	0	0	0	0	1	0	0	0	0	0	0	0	1	1	0.0%		
Rape	0	0	1	0	1	1	1	2	0	1	0	0	0	7	1	600.0%		
Robbery-Pedestrian	4	0	0	1	0	3	0	1	0	0	2	0	0	11	25	-56.0%		
Robbery-Commercial	0	0	0	0	2	0	0	0	1	0	1	1	0	5	4	25.0%		
Robbery-Residence	0	0	0	0	1	0	0	0	0	0	0	0	0	1	5	-80.0%		
Agg. Assault	0	0	1	0	0	1	5	1	1	2	6	3	1	21	15	40.0%		
Burglary-Residence	7	5	3	0	9	3	5	3	5	3	7	8	1	59	55	7.3%		
Burglary-NonRes	0	1	3	2	0	3	8	2	0	1	7	3	2	32	35	-8.6%		
Larceny-From Vehicle	19	13	51	26	27	44	48	42	26	17	40	24	37	414	424	-2.4%		
Larceny-Non Vehicle	7	3	12	34	7	15	11	26	4	75	43	5	10	252	303	-16.8%		
Auto Theft	4	0	11	5	4	15	14	9	4	9	11	10	11	107	93	15.1%		
Grand Totals														910	961	-5.3%		
2019 Beat Totals	41	22	82	68	51	86	92	86	41	108	117	54	62					
2018 Beat Totals	34	22	101	129	37	75	79	98	36	96	126	72	56					
% Beat Change	20.6%	0.0%	-18.8%	-47.3%	37.8%	14.7%	16.5%	-12.2%	13.9%	12.5%	-7.1%	-25.0%	10.7%					

