

HYATT CENTRIC HOTEL, BUCKHEAD



SHEET INDEX

COVER SHEET
01 - 5 MINUTE WALK MAP
02 - SITE PLAN
03 - CONTEXT VIEWS
04 - CONTEXT VIEWS
05 - LEVEL 1 - PLAN
06 - LEVEL 2 - PLAN
07 - TYPICAL LEVEL 3 - 7 - PLAN
08 - TYPICAL LEVEL 8 - 16 - PLAN
09 - LEVEL 17 - PLAN
10 - VIEW TO THE ENTRANCE
11 - VIEW FROM LENOX PKWY
12 - VIEW FROM PEDESTRIAN BRIDGE
13 - SOUTH ELEVATION
14 - NORTH ELEVATION
15 - EAST AND WEST ELEVATIONS

C0-20- SAP SITE PLAN
C0-20 - SAP PLAN

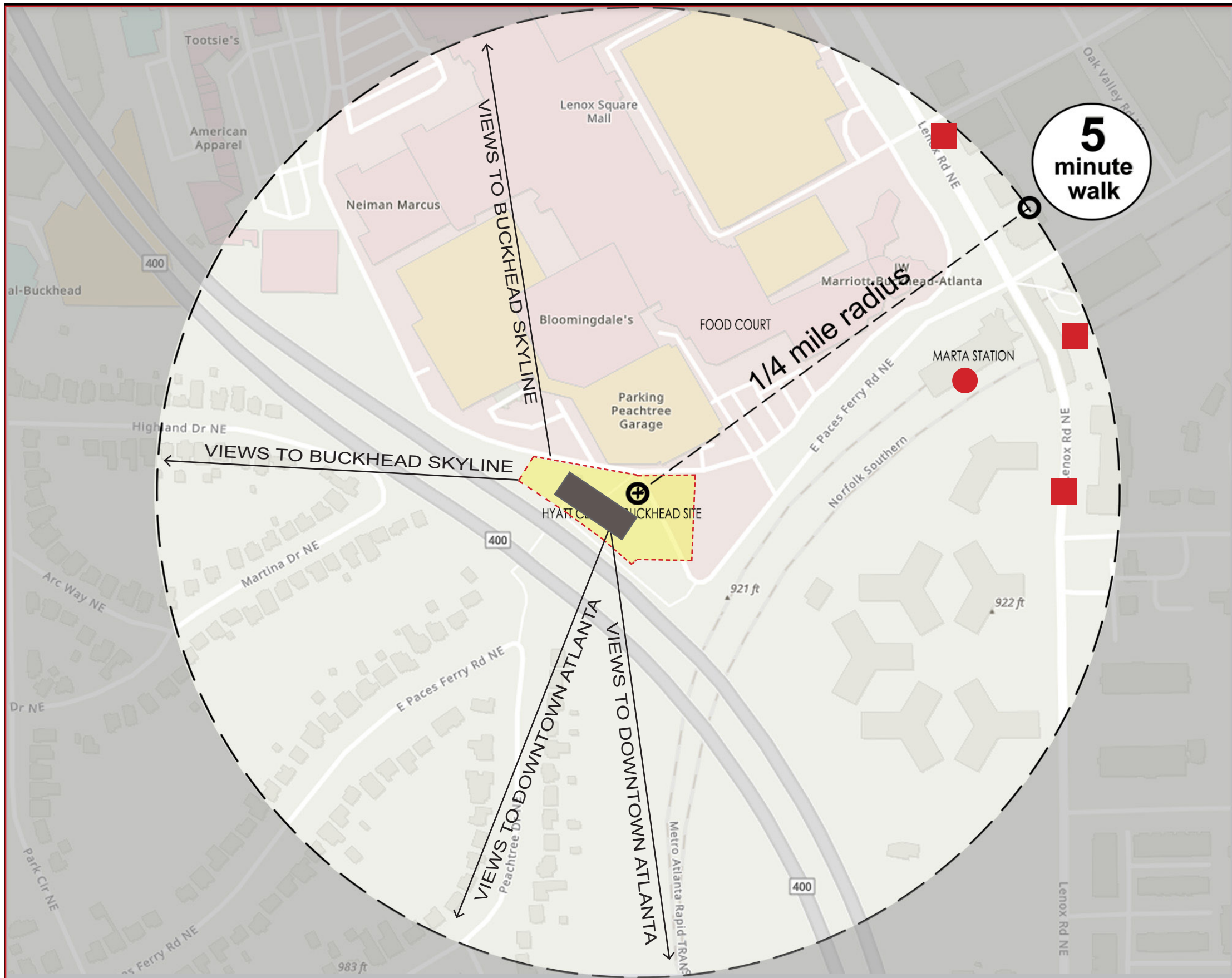
PROJECT N° 20190034

COVER

05/01/19 (REVISED 05/17/19)

DRC PRESENTATION

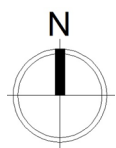
HYATT CENTRIC ATLANTA BUCKHEAD



TRANSIT - MARTA

- Local Bus Stop
- Rail Stop / Station

Walking one mile takes 20 minutes
 Biking two miles takes 10 minutes



FIVE MINUTE WALK STUDY

PROJECT N° 20190034 | 01 | 05/01/19 (REVISED 05/17/19)

DRC PRESENTATION

HYATT CENTRIC ATLANTA BUCKHEAD





SITE PLAN

PROJECT N° 20190034

02

05/01/19 (REVISED 05/17/19)

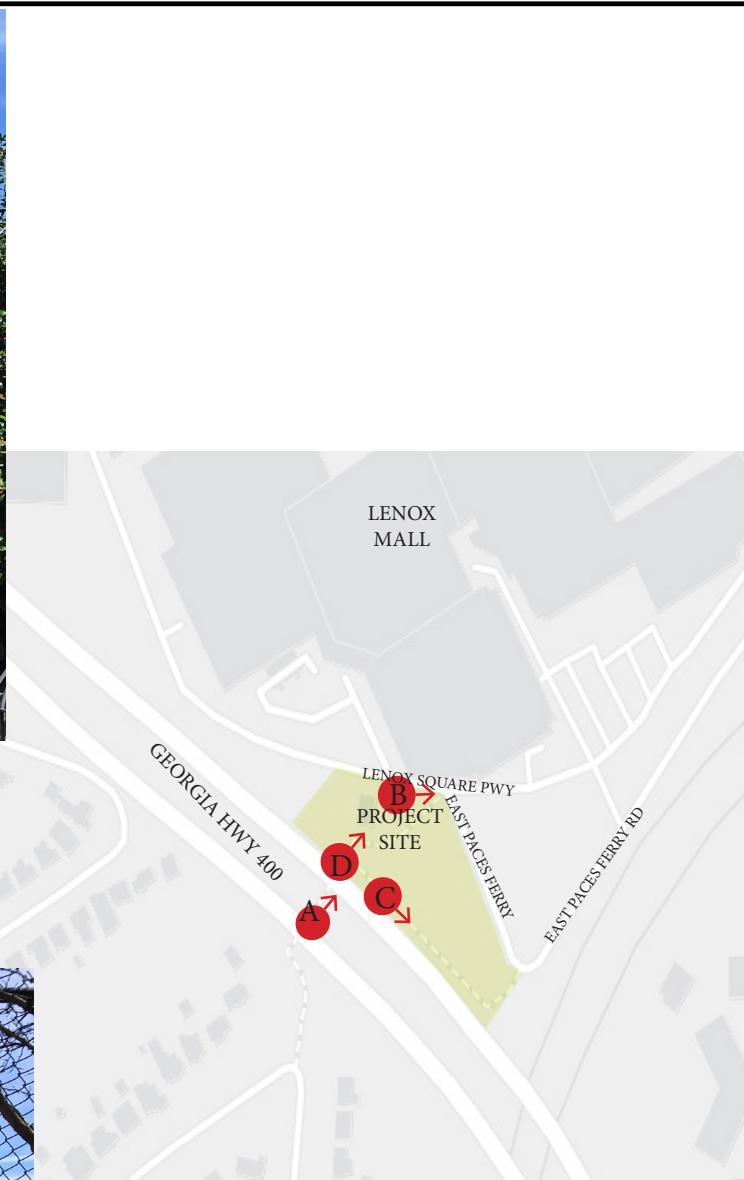
DRC PRESENTATION

HYATT CENTRIC ATLANTA BUCKHEAD





A: PEDESTRIAN CONNECTOR VIEW



B: VIEW FROM SITE TOWARDS MALL FOOD COURT AREA



C: VIEW ALONG PATHWAY



D: VIEW ALONG PATHWAY

CONTEXT VIEWS

PROJECT N° 20190034 | 03 | 05/01/19 (REVISED 05/17/19)

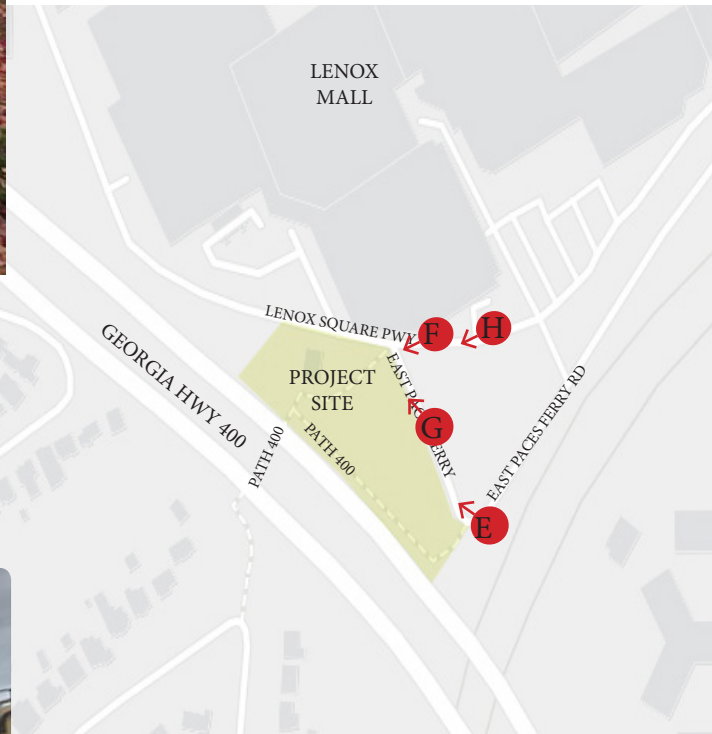
DRC PRESENTATION

HYATT CENTRIC ATLANTA BUCKHEAD





E : VEHICULAR VIEW FROM EAST PACES FERRY RD. TOWARDS PATHWAY AND SITE



F: VEHICULAR VIEW FROM LENOX PKWY AND EAST PACES FERRY RD INTERSECTION TOWARD SITE



G: VEHICULAR VIEW FROM EAST PACES FERRY RD TOWARDS



H: VEHICULAR VIEW FROM MALL FOOD COURT AREA BACK TOWARDS HOTEL SITE

CONTEXT VIEWS

PROJECT N° 20190034 | 04 | 05/01/19 (REVISED 05/17/19)

DRC PRESENTATION

HYATT CENTRIC ATLANTA BUCKHEAD





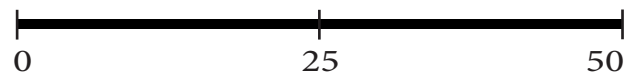
LEVEL 1- PLAN

PROJECT N° 20190034 | 05 | 05/01/19 (REVISED 05/17/19)

DRC PRESENTATION

HYATT CENTRIC ATLANTA BUCKHEAD





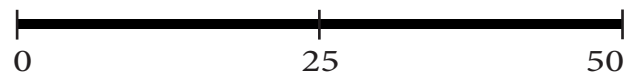
LEVEL 2- PLAN

PROJECT N° 20190034 | 06 | 05/01/19 (REVISED 05/17/19)

DRC PRESENTATION

HYATT CENTRIC ATLANTA BUCKHEAD





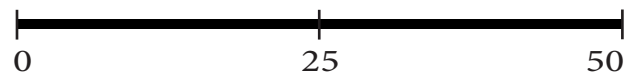
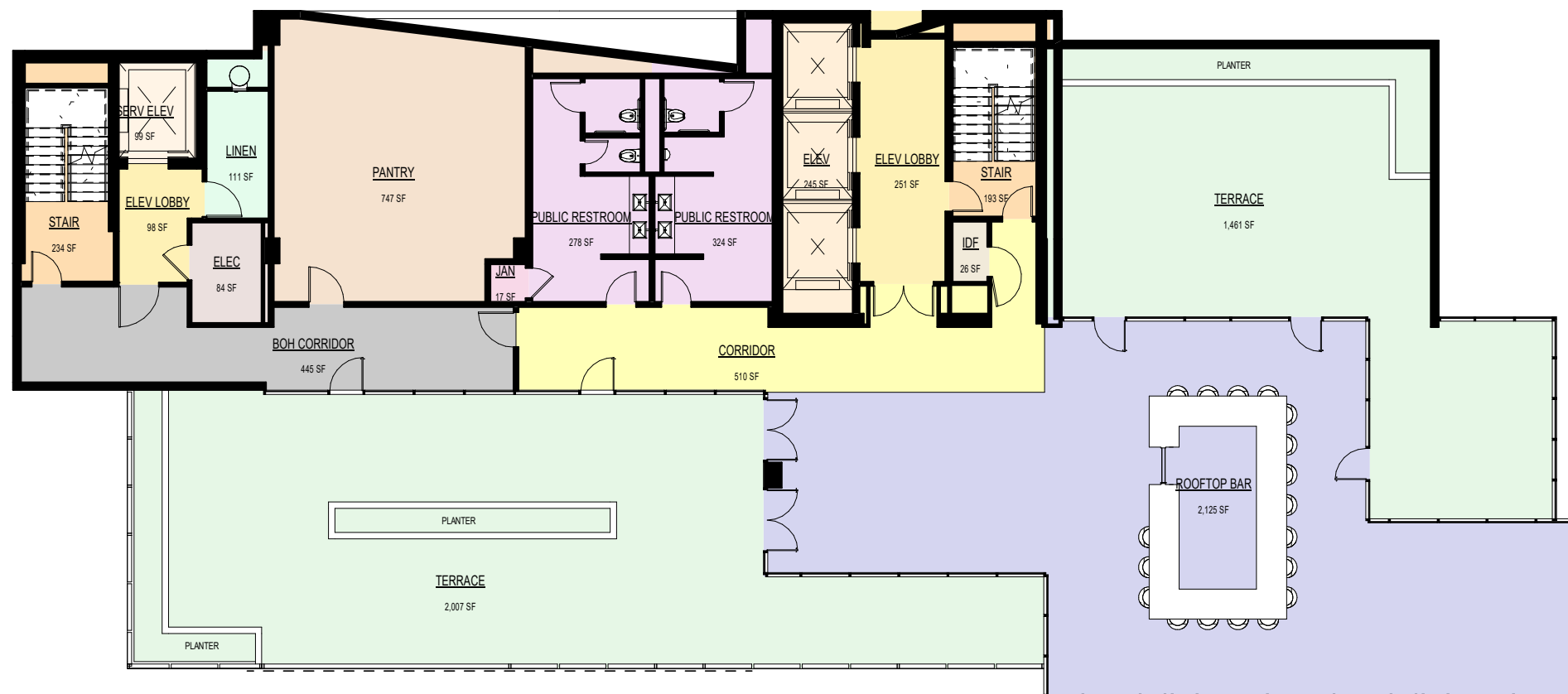
TYPICAL LEVEL 7-15- PLAN

PROJECT N° 20190034 | 08 | 05/01/19 (REVISED 05/17/19)

DRC PRESENTATION

HYATT CENTRIC ATLANTA BUCKHEAD





LEVEL 16- PLAN

PROJECT N° 20190034 | 09 | 05/01/19 (REVISED 05/17/19)

DRC PRESENTATION

HYATT CENTRIC ATLANTA BUCKHEAD





PROJECT N° 20190034

010

05/01/19 (REVISED 05/17/19)

DRC PRESENTATION

HYATT CENTRIC ATLANTA BUCKHEAD



VIEW TO THE ENTRANCE

PROJECT N° 20190034

011

05/01/19 (REVISED 05/17/19)

DRC PRESENTATION

HYATT CENTRIC ATLANTA BUCKHEAD



VIEW FROM LENOX PKWY

PROJECT N° 20190034 | 012 | 05/01/19 (REVISED 05/17/19)

DRC PRESENTATION

HYATT CENTRIC ATLANTA BUCKHEAD





VIEW FROM PEDESTRIAN BRIDGE

PROJECT N° 20190034

013

05/01/19 (REVISED 05/17/19)

DRC PRESENTATION

HYATT CENTRIC ATLANTA BUCKHEAD

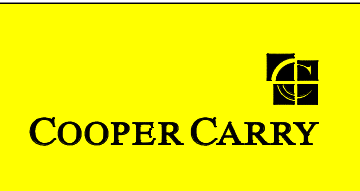


SOUTH ELEVATION

PROJECT N° 20190034 | 014 | 05/01/19 (REVISED 05/17/19)

DRC PRESENTATION

HYATT CENTRIC ATLANTA BUCKHEAD



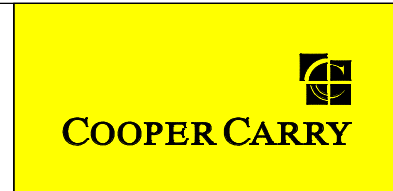


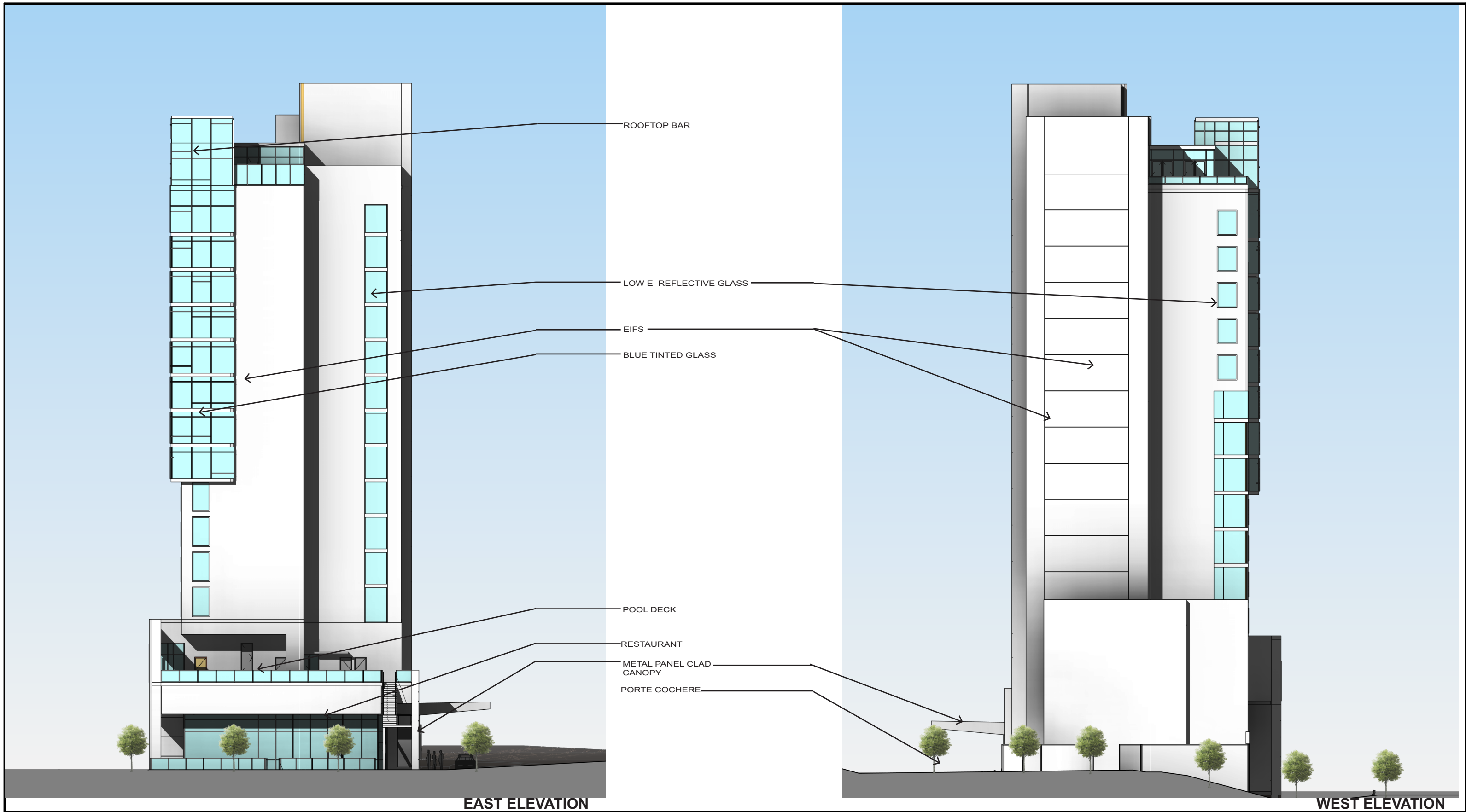
NORTH ELEVATION

PROJECT N° 20190034 | 015 | 05/01/19 (REVISED 05/17/19)

DRC PRESENTATION

HYATT CENTRIC ATLANTA BUCKHEAD





ROOFTOP BAR

LOW E REFLECTIVE GLASS

EIFS

BLUE TINTED GLASS

POOL DECK

RESTAURANT

METAL PANEL CLAD CANOPY

PORTE COCHERE

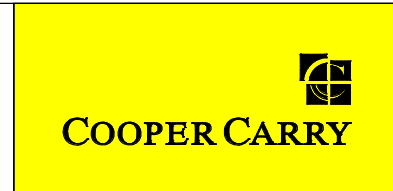
EAST ELEVATION

WEST ELEVATION

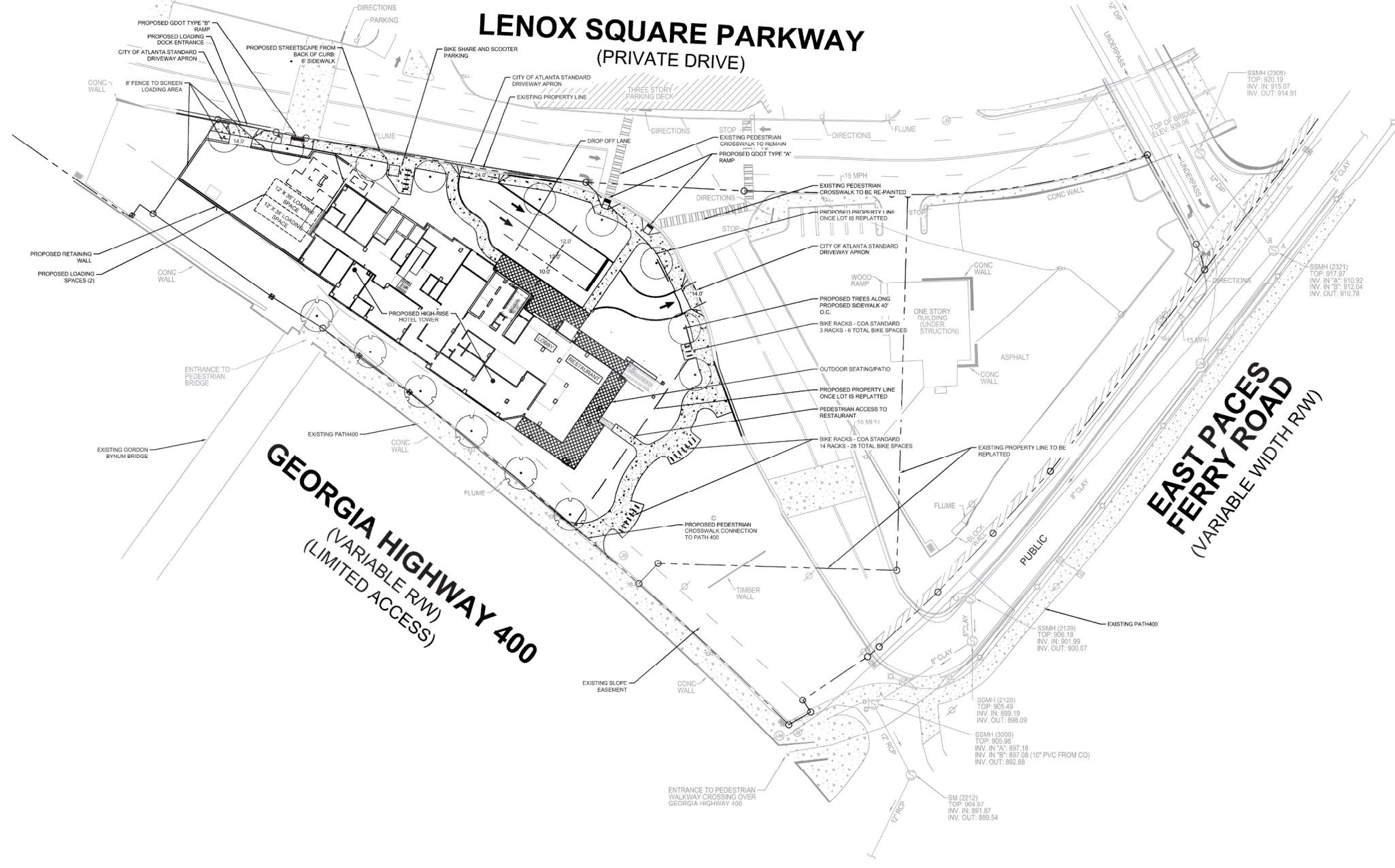
DRC PRESENTATION

HYATT CENTRIC ATLANTA BUCKHEAD

PROJECT N° 20190034 | 016 | 05/01/19 (REVISED 05/17/19)



Drawing name: C:\MAP_P\01975401\Lenox Hyatt Hotel\CD\PlanSheets\CD-20 - 3NP SITE PLAN.dwg C:\00 SITE PLAN May 17, 2019 11:08am by jsh.mym



**LENOX SQUARE PARKWAY
(PRIVATE DRIVE)**

**GEORGIA HIGHWAY 400
(VARIABLE RW) (LIMITED ACCESS)**

**EAST PACES FERRY ROAD
(VARIABLE WIDTH RW)**

SAP File Number: SAP - XX - XXX
Zoning Classification
SPI-12 Subarea Type 1
LENOX SQUARE PARKWAY = MAJOR SIDEWALK
FOR PRIMARY STREET

GENERAL NOTES:

- ADDRESS NUMBERS ARE TO BE PROVIDED ON BUILDING AND BE A MINIMUM OF 6" IN HEIGHT (SEE ARCHITECTURAL ELEVATIONS).
- ALL LOADING SPACES TO HAVE MIN. 14' VERTICAL CLEARANCE.
- 41 BIKE SPACES MIN. PROVIDED:
- 8 RACKS PROVIDED IN SIDEWALK
- 18 RACKS PROVIDED ALONG PATH 400

City of Atlanta Office of Planning & Development
SPECIAL ADMINISTRATIVE PERMIT (SAP) APPLICATION
Development Controls Specifications (Required)
File #

Definitions and Methods of Calculation

Let Block in square feet

Floor Area Ratio (FAR) - as applicable. Check which used for residential, R.A., G.A., or M.A.

Residential Units

Residential Units Provided

Building Coverage or Lot Coverage

Estimated FAR

City of Atlanta Office of Planning & Development
SPECIAL ADMINISTRATIVE PERMIT (SAP) APPLICATION
Development Controls Specifications (Required)
File #

Definitions and Methods of Calculation

TOBR: Total Open Space Requirements for Residential City Projects

USBR: Usable Open Space Requirements for Residential and/or Mixed-Use Developments

City of Atlanta Office of Planning & Development
SPECIAL ADMINISTRATIVE PERMIT (SAP) APPLICATION
Development Controls Specifications (Required)
File #

Public Space Requirements for Non-Residential and Mixed-Use Developments

Non-Residential Public Space Requirements

Parking and Loading Requirements

Kimley»Horn
© 2019 KIMLEY-HORN AND ASSOCIATES, INC.
11720 AMBER PARK DRIVE, SUITE 600
ALPHARETTA, GEORGIA 30009
PHONE: (770) 943-9900
WWW.KIMLEY-HORN.COM

SONGY HIGHROADS
11805 HAYNES BRIDGE ROAD, SUITE 125
ALPHARETTA, GA 30009
PHONE: 608.603.0689

NO.	REVISION DESCRIPTIONS	DATE	BY

LENOX HYATT CENTIC
3301 LENOX SQUARE PARKWAY, ATLANTA, GA
LAND LOT 46, 17TH DISTRICT

GWCC CERT (LEVEL 2) 00000XXXXX
DRAWN BY LBG
DESIGNED BY LBG
REVIEWED BY CFM
DATE
PROJECT NO. 019754014
TITLE
SAP SITE PLAN
SHEET NUMBER
C0-20



Drawing name: V:\ALP_P5\01975401\Lenox_Highway_Parkway_SAP_Plan\C2-20_Site_Plan.dwg C2-20 SITE PLAN (PLOT) 2/18/2025 2:15:11 PM by: jwh

This document, together with the concepts and designs presented herein, is intended only for the specific purpose and client for which it was prepared. Reuse of and improper reliance on this document without written authorization and adaptation by Kimley-Horn and Associates, Inc. shall be without liability to Kimley-Horn and Associates, Inc.

LENOX SQUARE PARKWAY (PRIVATE DRIVE)

Kimley»Horn
 8250 AMBER HURD AND ASSOCIATES, INC.
 11720 AMBER PARK DRIVE, SUITE 600
 ALPHARETTA, GEORGIA 30009
 PHONE: 770-242-1000
 WWW.KIMLEY-HORN.COM

SONGY HIGHROADS
 11665 HAYNES BRIDGE ROAD, SUITE 125
 ALPHARETTA, GA 30005
 PHONE: 678-848-0688

LENOX HYATT CENTIC
 330 LENOX SQUARE PARKWAY, ATLANTA, GA
 LAND LOT 46, 17TH DISTRICT

NO.	REVISION DESCRIPTIONS	DATE	BY

DRWG CERT (LEVEL 0)	00000XXXX
CREATED BY	LBG
DESIGNED BY	LBG
REVIEWED BY	EFM
DATE	
PROJECT NO.	019754014
TITLE	SAP SITE PLAN
SHEET NUMBER	C0-20

