

HYATT CENTRIC HOTEL, BUCKHEAD



SHEET INDEX

COVER SHEET
01 - 5 MINUTE WALK MAP
02 - SITE PLAN
03 - CONTEXT VIEWS
04 - CONTEXT VIEWS
05 - LEVEL 1 - PLAN
06 - LEVEL 2 - PLAN
07 - TYPICAL LEVEL 3 - 7 - PLAN
08 - TYPICAL LEVEL 8 - 16 - PLAN
09 - LEVEL 17 - PLAN
10 - VIEW TO THE ENTRANCE
11 - VIEW FROM LENOX PKWY
12 - VIEW FROM PEDESTRIAN BRIDGE
13 - SOUTH ELEVATION
14 - NORTH ELEVATION
15 - EAST AND WEST ELEVATIONS

C0-20- SAP SITE PLAN
C0-20 - SAP PLAN

PROJECT N° 20190034

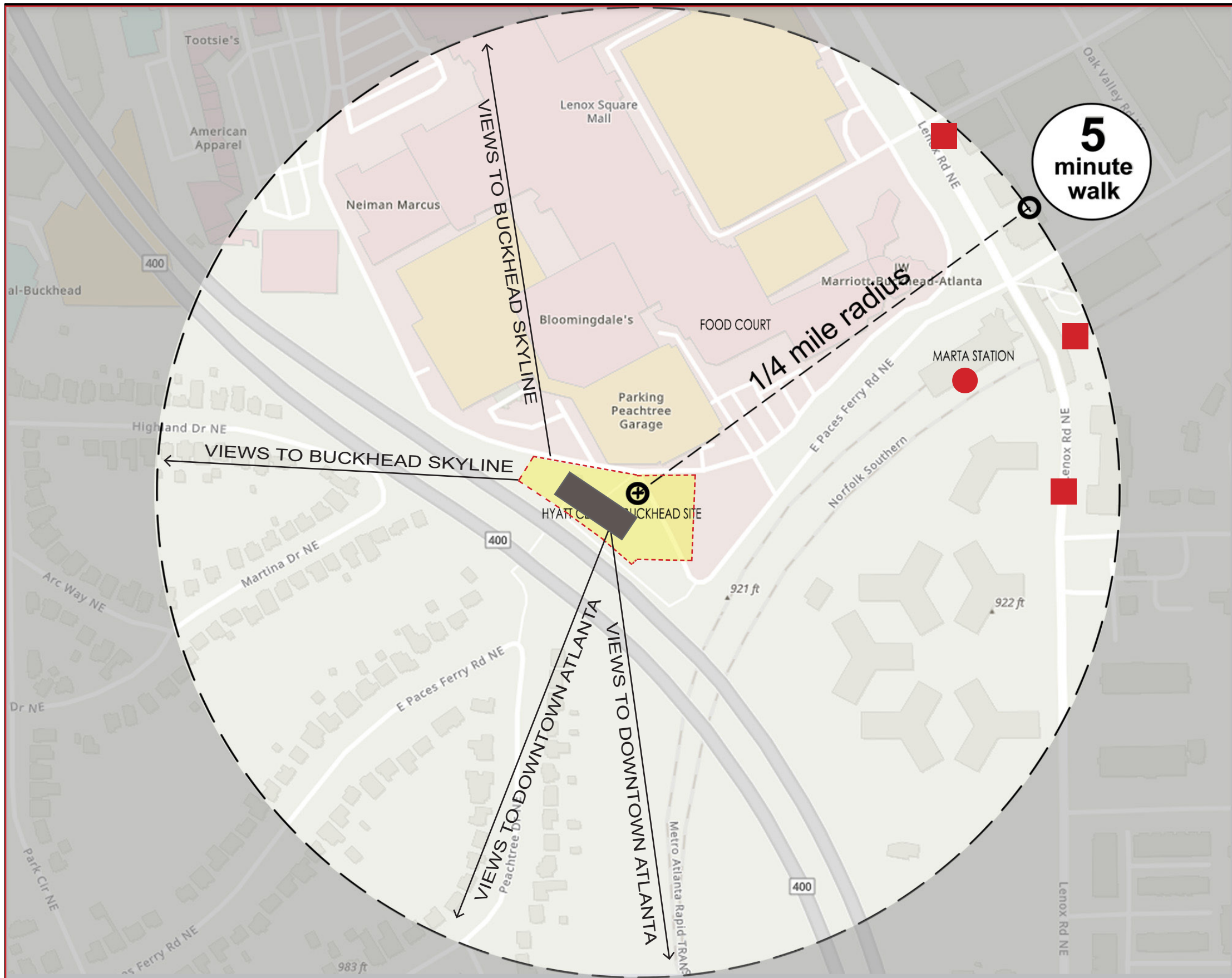
COVER

05/01/19

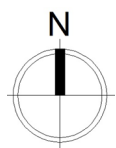
DRC PRESENTATION

HYATT CENTRIC ATLANTA BUCKHEAD
BUCKHEAD, GA





- TRANSIT - MARTA**
- Local Bus Stop
 - Rail Stop / Station
- Walking one mile takes 20 minutes
Biking two miles takes 10 minutes



FIVE MINUTE WALK STUDY

PROJECT N° 20190034 | 01 | 05/01/19

DRC PRESENTATION

HYATT CENTRIC ATLANTA BUCKHEAD
BUCKHEAD, GA





SITE PLAN

PROJECT N° 20190034

02

05/01/19

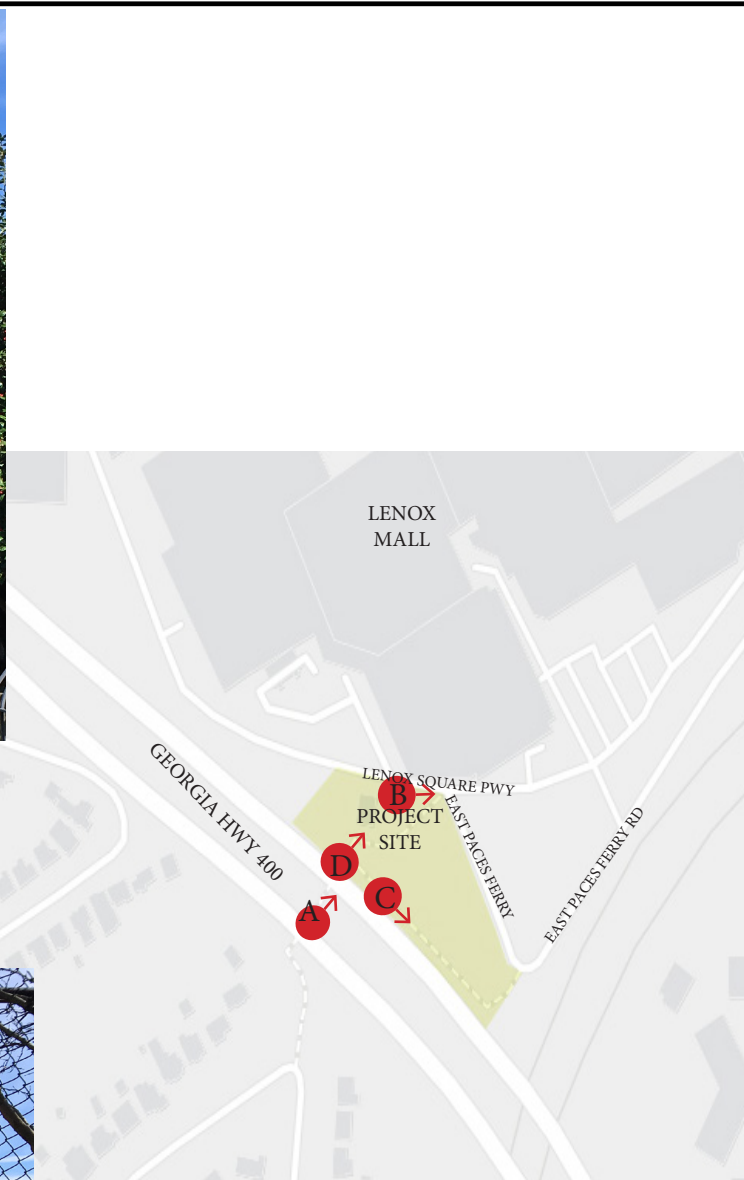
DRC PRESENTATION

HYATT CENTRIC ATLANTA BUCKHEAD
BUCKHEAD, GA





A: PEDESTRIAN CONNECTOR VIEW



B: VIEW FROM SITE TOWARDS MALL FOOD COURT AREA



C: VIEW ALONG PATHWAY



D: VIEW ALONG PATHWAY

CONTEXT VIEWS

PROJECT N° 20190034 | 03 | 05/01/19

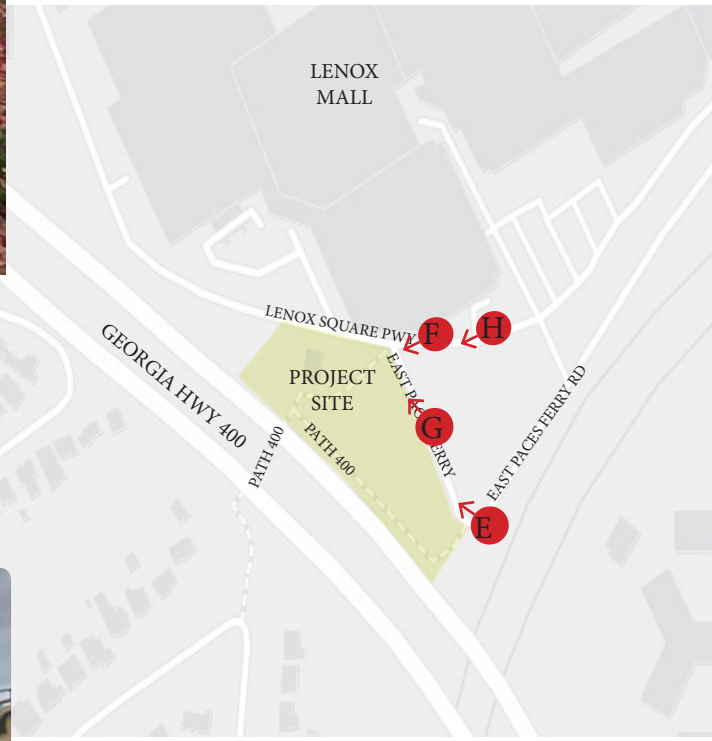
DRC PRESENTATION

HYATT CENTRIC ATLANTA BUCKHEAD
BUCKHEAD, GA





E : VEHICULAR VIEW FROM EAST PACES FERRY RD. TOWARDS PATHWAY AND SITE



F: VEHICULAR VIEW FROM LENOX PKWY AND EAST PACES FERRY RD INTERSECTION TOWARD SITE



G: VEHICULAR VIEW FROM EAST PACES FERRY RD TOWARDS



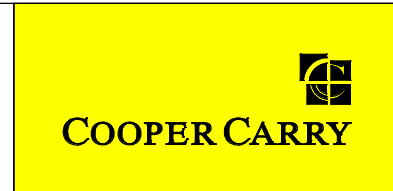
H: VEHICULAR VIEW FROM MALL FOOD COURT AREA BACK TOWARDS HOTEL SITE

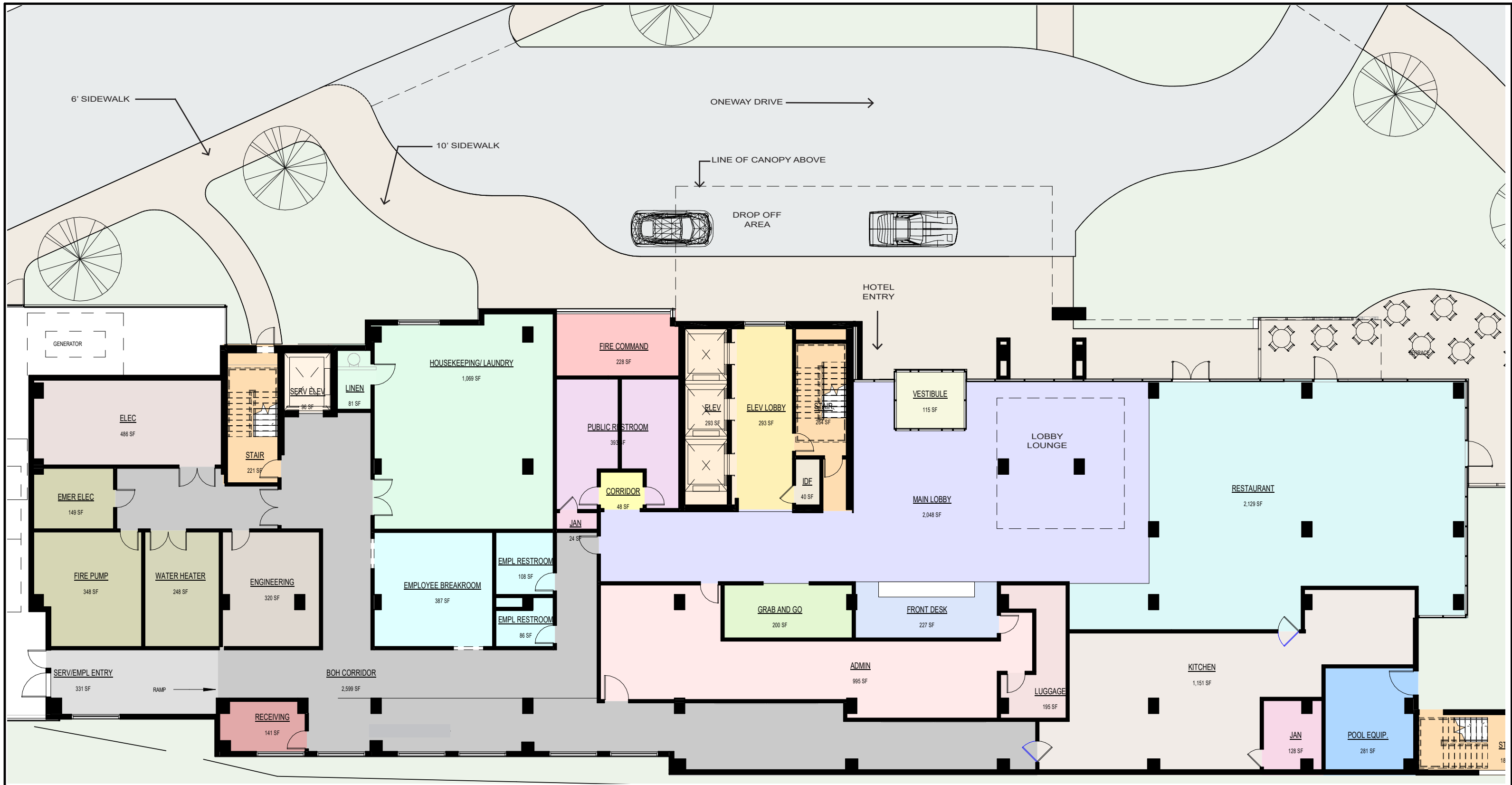
CONTEXT VIEWS

PROJECT N° 20190034 | 04 | 05/01/19

DRC PRESENTATION

HYATT CENTRIC ATLANTA BUCKHEAD
BUCKHEAD, GA





LEVEL 1- PLAN

PROJECT N° 20190034 | 05 | 05/01/19

DRC PRESENTATION

HYATT CENTRIC ATLANTA BUCKHEAD
BUCKHEAD, GA



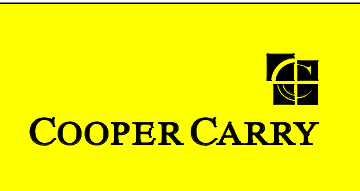


LEVEL 2- PLAN

PROJECT N° 20190034 | 06 | 05/01/19

DRC PRESENTATION

HYATT CENTRIC ATLANTA BUCKHEAD
BUCKHEAD, GA





TYPICAL LEVEL 3-7- PLAN

PROJECT N° 20190034 | 07 | 05/01/19

DRC PRESENTATION

HYATT CENTRIC ATLANTA BUCKHEAD
BUCKHEAD, GA





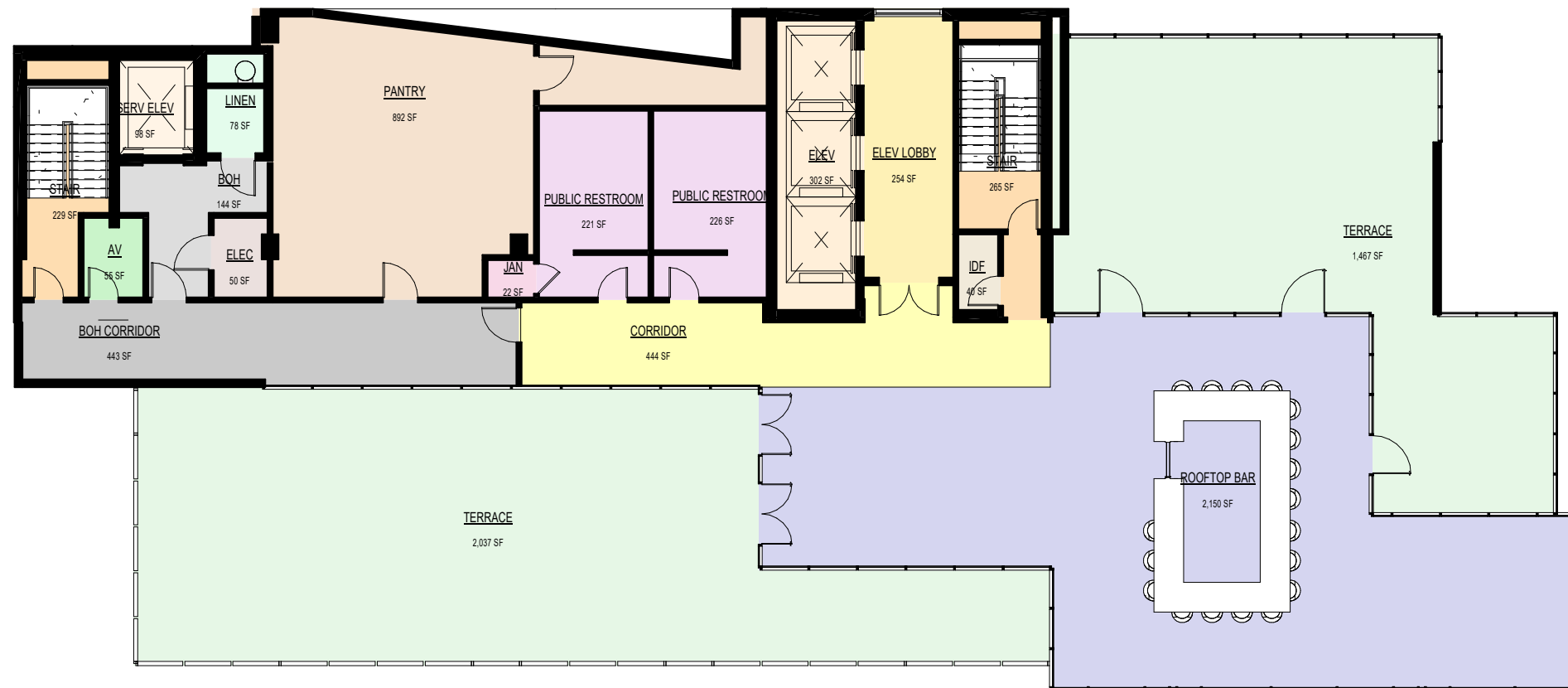
TYPICAL LEVEL 8-16- PLAN

PROJECT N° 20190034 | 08 | 05/01/19

DRC PRESENTATION

HYATT CENTRIC ATLANTA BUCKHEAD
BUCKHEAD, GA





LEVEL 17- PLAN

PROJECT N° 20190034 | 09 | 05/01/19

DRC PRESENTATION

HYATT CENTRIC ATLANTA BUCKHEAD
 BUCKHEAD, GA





PROJECT SITE AERIAL

PROJECT N° 20190034 | 010 | 05/01/19

DRC PRESENTATION

HYATT CENTRIC ATLANTA BUCKHEAD
BUCKHEAD, GA



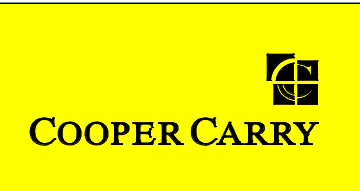


VIEW TO THE ENTRANCE

PROJECT N° 20190034 | 011 | 05/01/19

DRC PRESENTATION

HYATT CENTRIC ATLANTA BUCKHEAD
BUCKHEAD, GA





VIEW FROM LENOX PKWY

PROJECT N° 20190034 | 012 | 05/01/19

DRC PRESENTATION

HYATT CENTRIC ATLANTA BUCKHEAD
BUCKHEAD, GA





VIEW FROM PEDESTRIAN BRIDGE

PROJECT N° 20190034

013

05/01/19

DRC PRESENTATION

HYATT CENTRIC ATLANTA BUCKHEAD
BUCKHEAD, GA

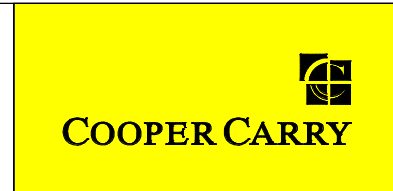


SOUTH ELEVATION

PROJECT N° 20190034 | 014 | 05/01/19

DRC PRESENTATION

HYATT CENTRIC ATLANTA BUCKHEAD
BUCKHEAD, GA



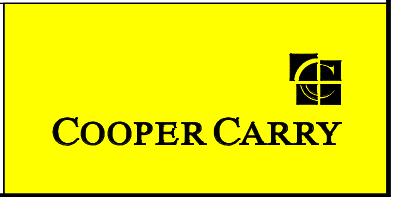


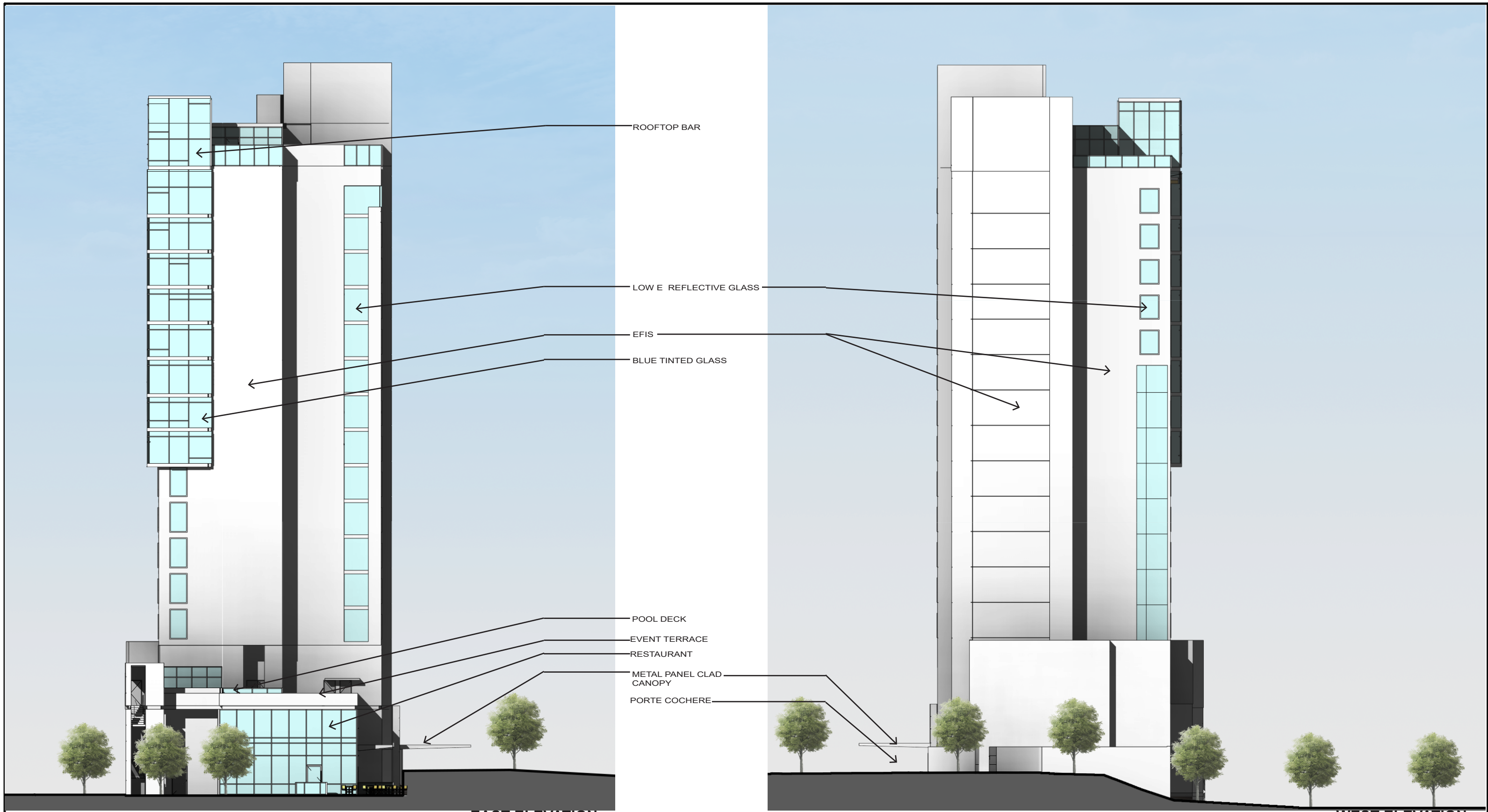
NORTH ELEVATION

PROJECT N° 20190034 | 015 | 05/01/19

DRC PRESENTATION

HYATT CENTRIC ATLANTA BUCKHEAD
BUCKHEAD, GA





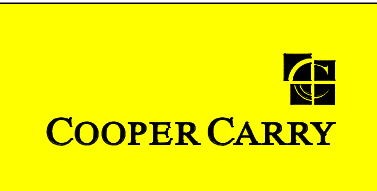
EAST ELEVATION

WEST ELEVATION

PROJECT N° 20190034 | 016 | 05/01/19

DRC PRESENTATION

HYATT CENTRIC ATLANTA BUCKHEAD
BUCKHEAD, GA





COOPER CARRY

HYATT CENTRIC BUCKHEAD PROJECT SUMMARY

DEVELOPMENT

The Hyatt Centric Buckhead will be a 16 story hotel on a one acre site on the edge of Lenox Square near the George C. Bynum Pedestrian Bridge. The Hyatt Centric Buckhead will be an upscale boutique lifestyle hotel with 221 keys including 12 suites. The exterior of the hotel will be modern with light-color materials. The roof-top restaurant will be an architectural feature with 360 degree views of Buckhead and Downtown Atlanta. The Hyatt Centric Buckhead Lobby café/restaurant is oriented to be easily accessed from Path 400. It will include outdoor dining. It will be designed to activate this portion of Path 400.

CONCEPT

The target guest is a “Savvy Explorer” who wants to be in the middle of the action who wants a hotel to deliver on the things that matter. The Centric guest appreciates experiences but is value-oriented. Touchpoints for the hotel start with a vibrant arrival with a strong sense of place. Social spaces will include a Lobby level café with bar and Grab-N-Go and a rooftop restaurant with bar designed by a local restaurateur and Johnson Studios. Guestrooms will be upscale and modern. The hotel is designed with 4000 square feet of meeting space to support small-to-medium sizes meetings and celebrations. The Fitness Center will be complimented by a pool and pool deck.

SITE DEVELOPMENT

- All guest parking will be by valet and will be parked across the street at an existing parking lot.
- The site will be improved with additional sidewalks.
- Path 400 will extend from the Gordon Bynum Pedestrian Bridge, along the side of the hotel café/restaurant to Lenox Square. Riders can use Bike Lockers and Bike Stands.
- Sidewalks will be re-built and extended along Lenox Parkway. This will increase the connectivity to Lenox Square Food Court. The existing cross-walks to the parking deck at Bloomingdales will remain.
- The hotel property will be landscaped with additional trees and bio-diverse planting—including along the portion of the property that face Path 400.

VARIATIONS

No variations from SPI-12 requirements are being requested.