



TRAFFIC BRIEFING FOR SUPER BOWL LIII

December 17, 2018 – December 20, 2018
GWCC, Building C – C101



Super Bowl LIII - Overview

- 10 day operational period
- Load-in begins January 2, 2019
- Load-out completed February 27, 2019
- Events start Saturday, January 26, 2019
- Gameday is Sunday, February 3, 2019
- Major Departure Day is Monday, February 4, 2019
- Estimating over 150,000 out of town guests
- 107 Hotels in NFL block
- 20,100 hotel rooms on peak night
- Estimating over 1 Million visitors will come to NFL Events
- 10,000 volunteers selected to welcome and assist

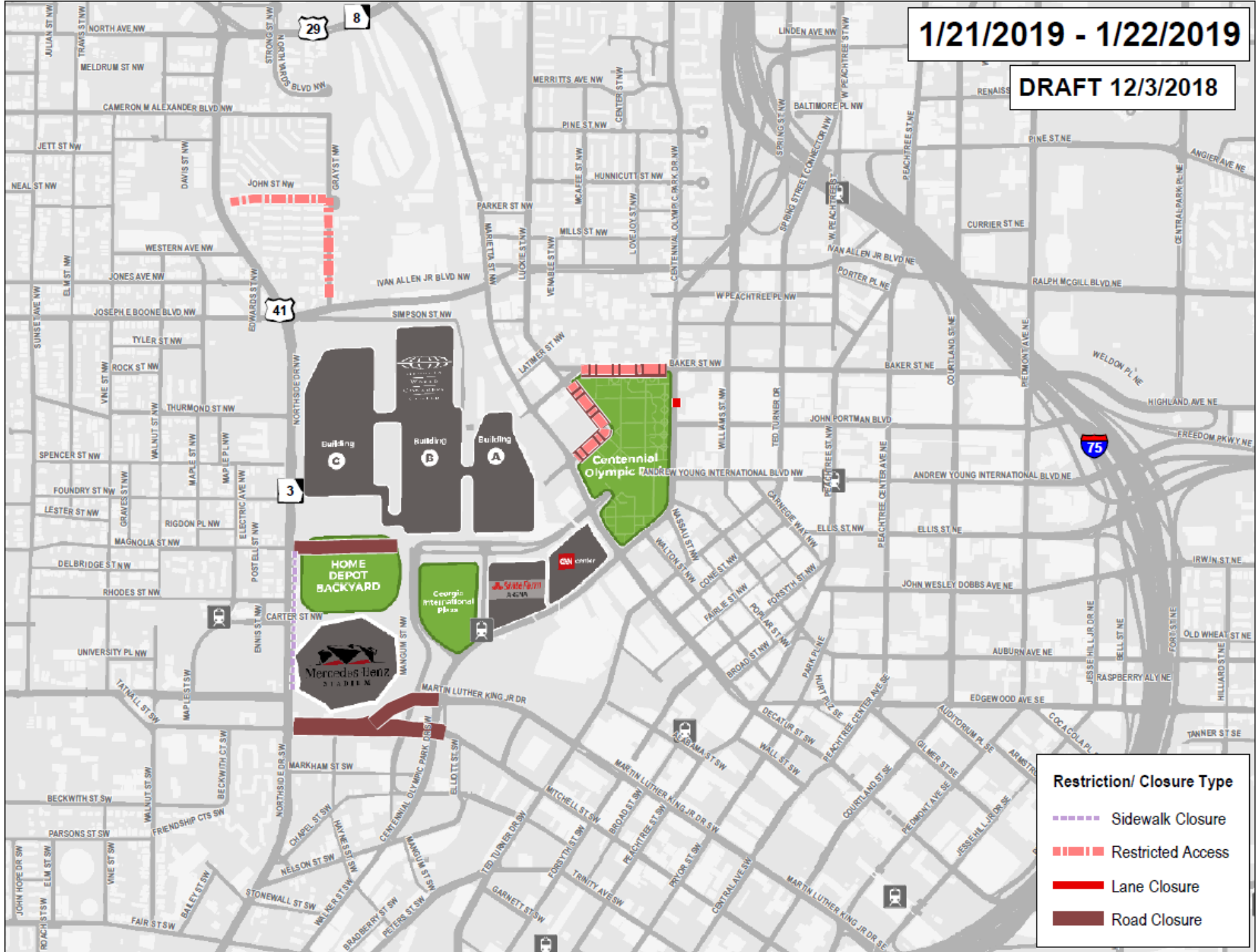


LANE & ROAD CLOSURES AROUND MERCEDES-BENZ STADIUM AND DOWNTOWN



1/21/2019 - 1/22/2019

DRAFT 12/3/2018

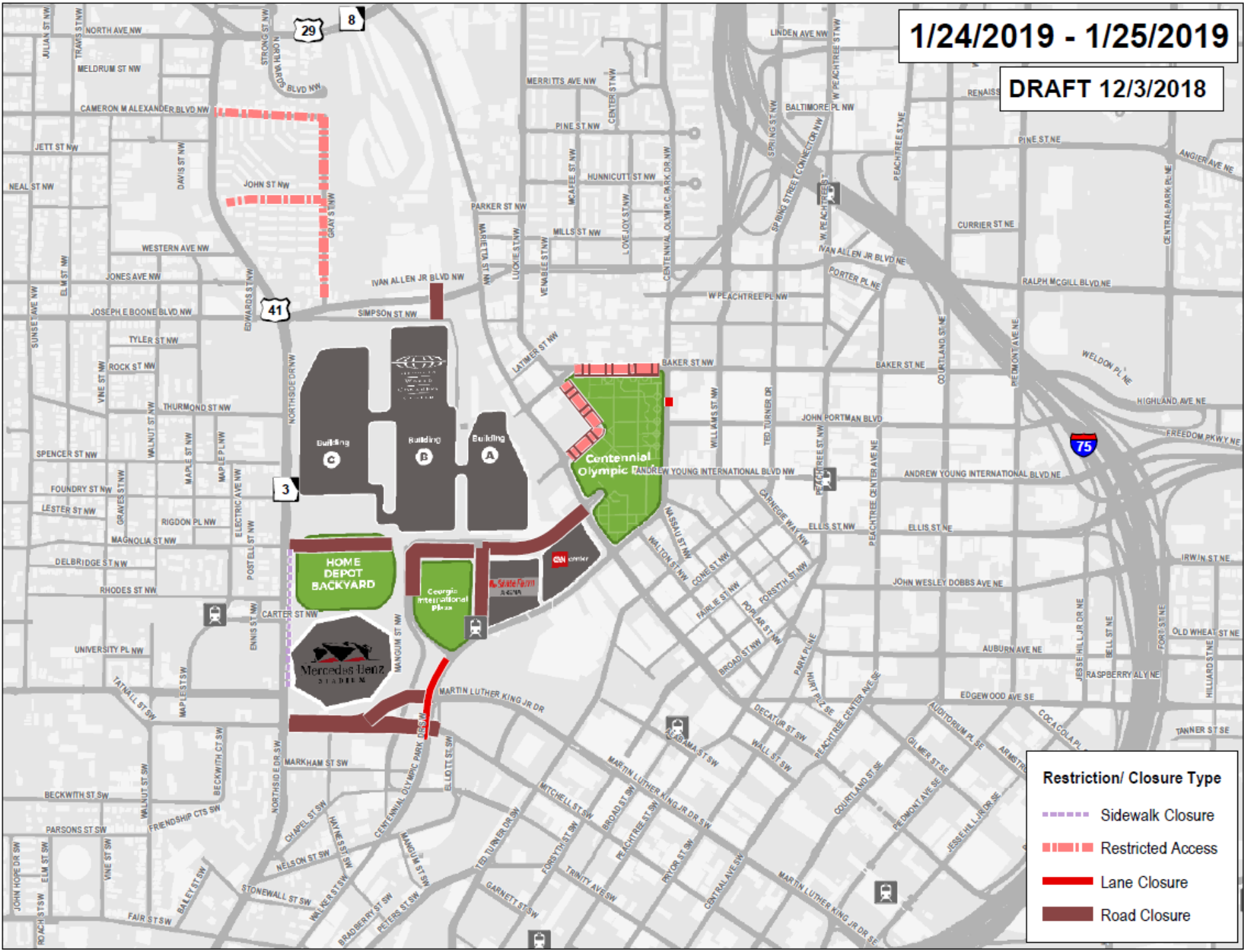


Restriction/ Closure Type

- Sidewalk Closure
- - - Restricted Access
- Lane Closure
- Road Closure

1/24/2019 - 1/25/2019

DRAFT 12/3/2018



Restriction/ Closure Type

- Sidewalk Closure
- Restricted Access
- Lane Closure
- Road Closure



Super Bowl LIII

Super Bowl Week Impacts

SAT. JANUARY 26 -
SAT. FEBRUARY 2ND,
2019



ATLANTA
HOST TO SUPER BOWL LIII

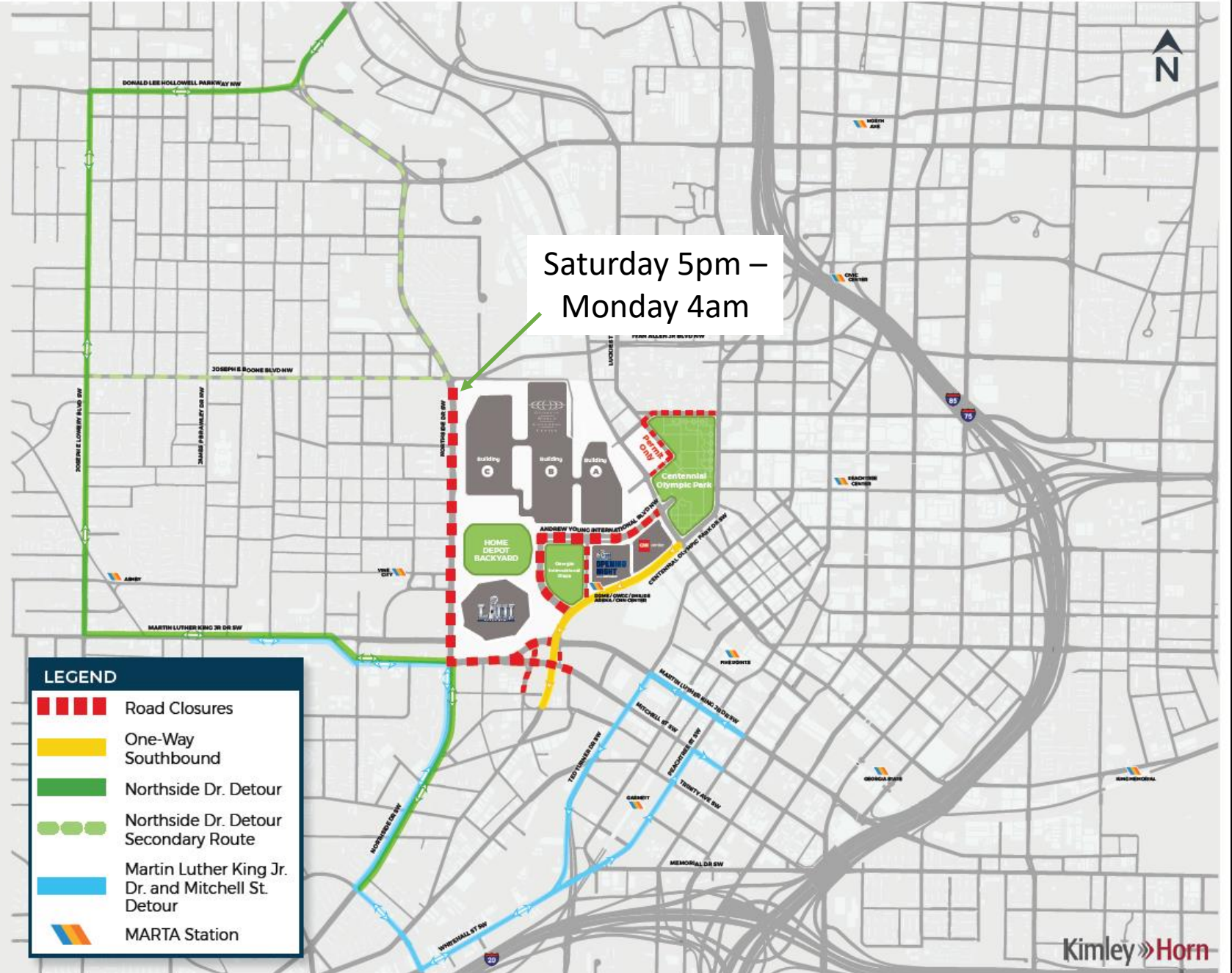




Super Bowl LIII

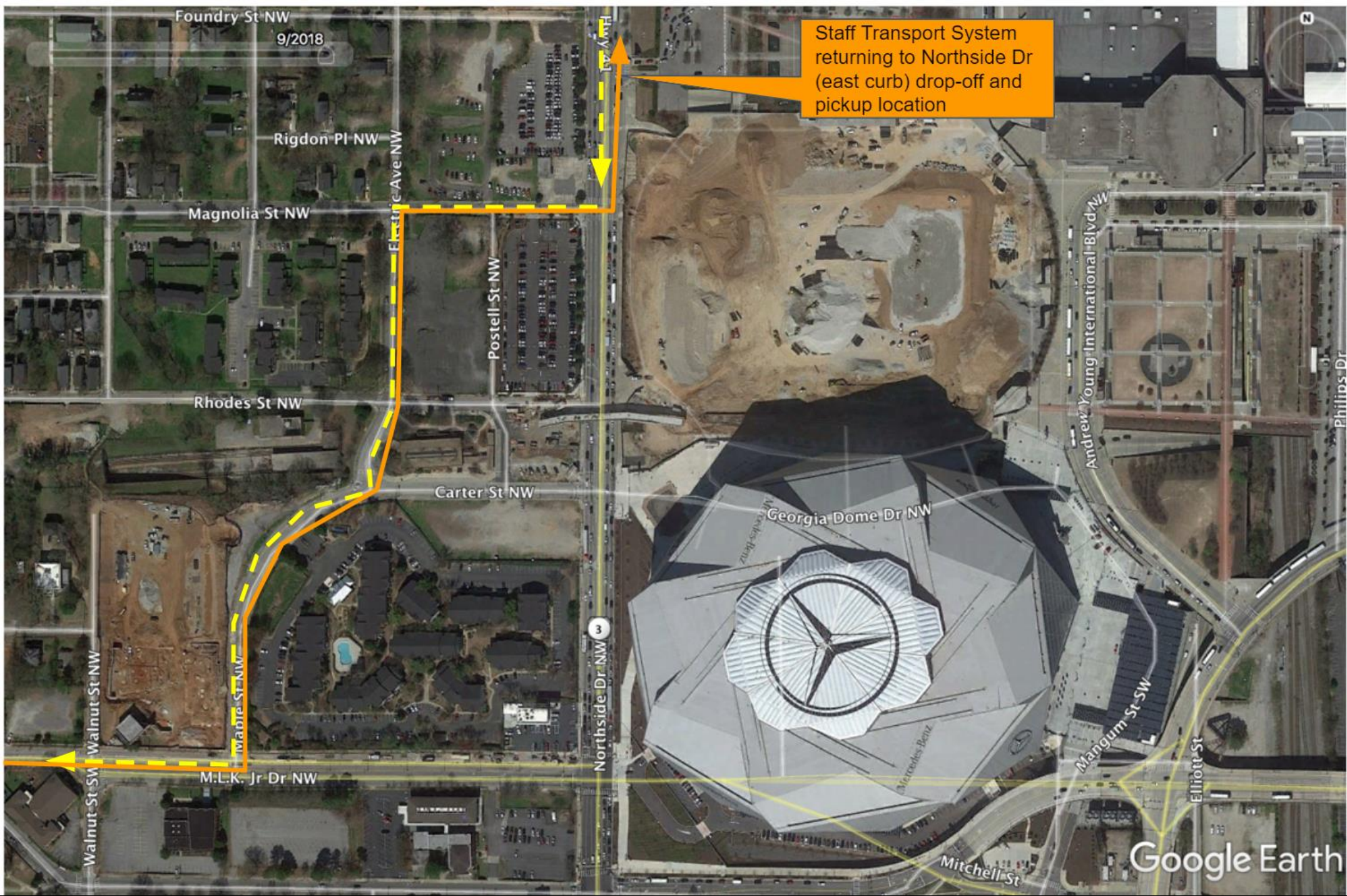
Proposed
Road Closures
and Detours

Saturday Feb. 2 –
Sunday Feb. 3



Foundry St NW
9/2018

Staff Transport System
returning to Northside Dr
(east curb) drop-off and
pickup location



9/2018

Rigdon Pl NW

Magnolia St NW

Rhodes St NW

Carter St NW

Georgia Dome Dr NW

Walnut St NW

M.L.K. Jr Dr NW

Northside Dr NW

Postell St NW

Electric Ave NW

Andrew Young International Blvd NW

Mangum St SW

Elliott St

Mitchell St

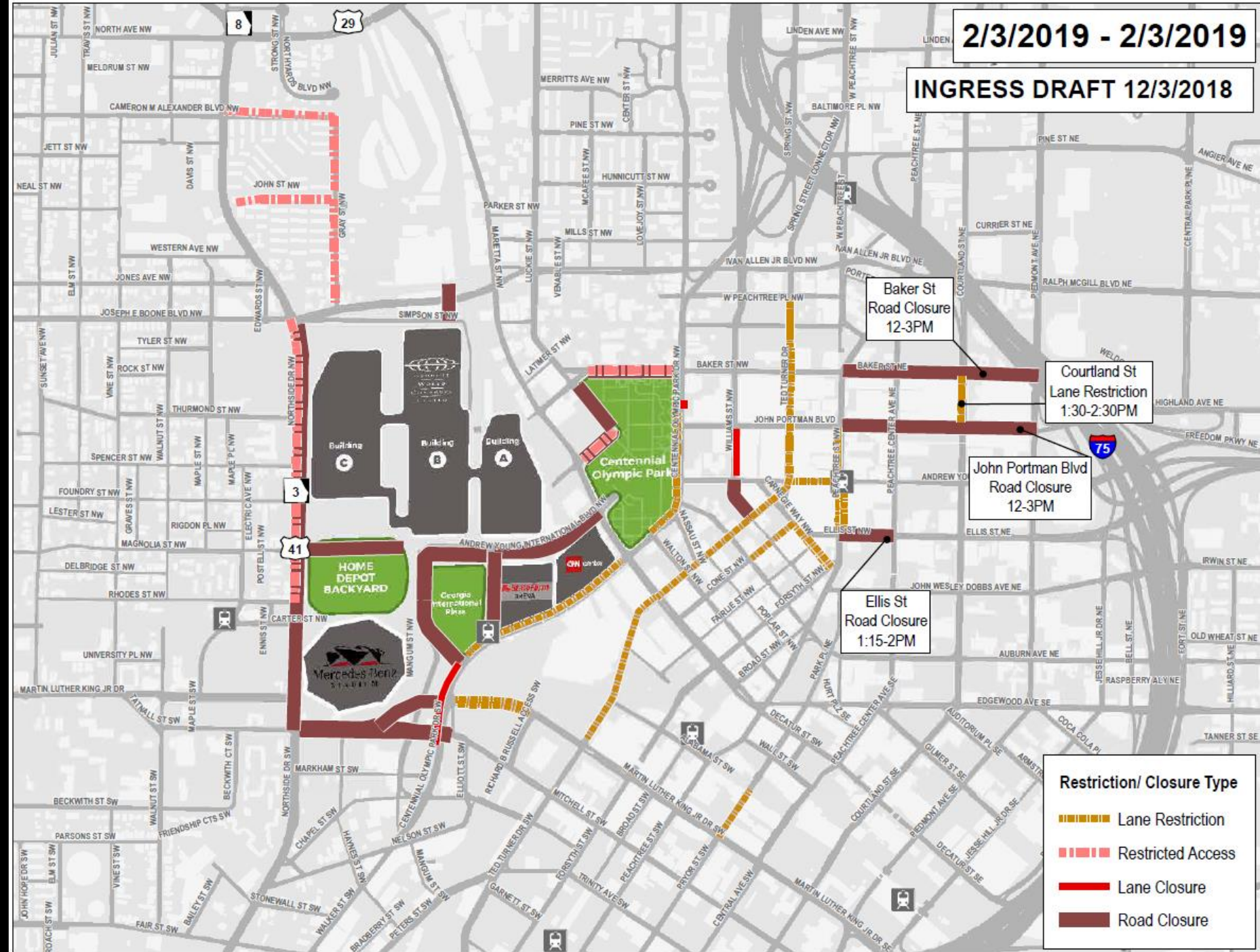
Google Earth

N

Phillips Dr

2/3/2019 - 2/3/2019

INGRESS DRAFT 12/3/2018

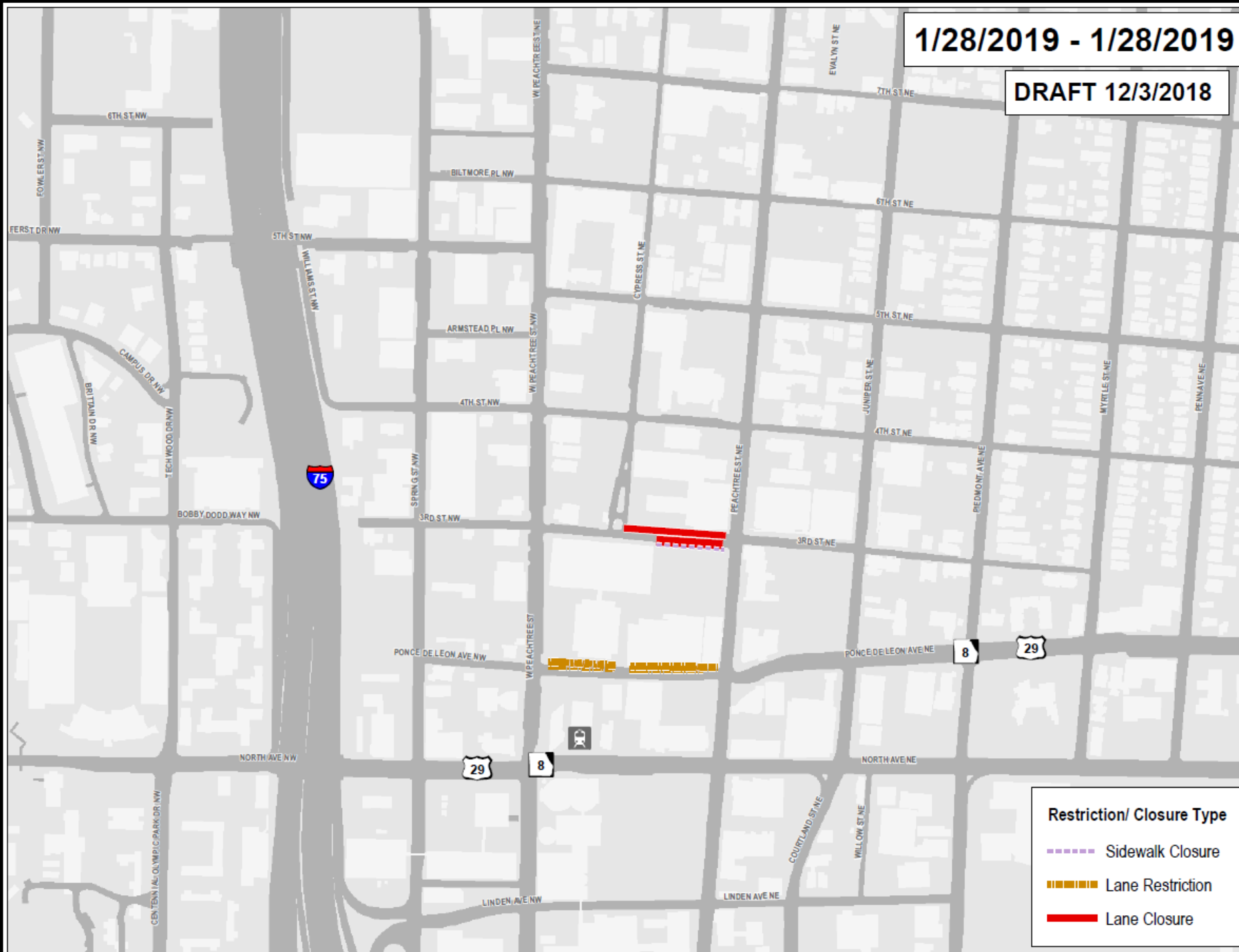


LANE & ROAD CLOSURES AROUND THE FOX THEATRE AND MIDTOWN



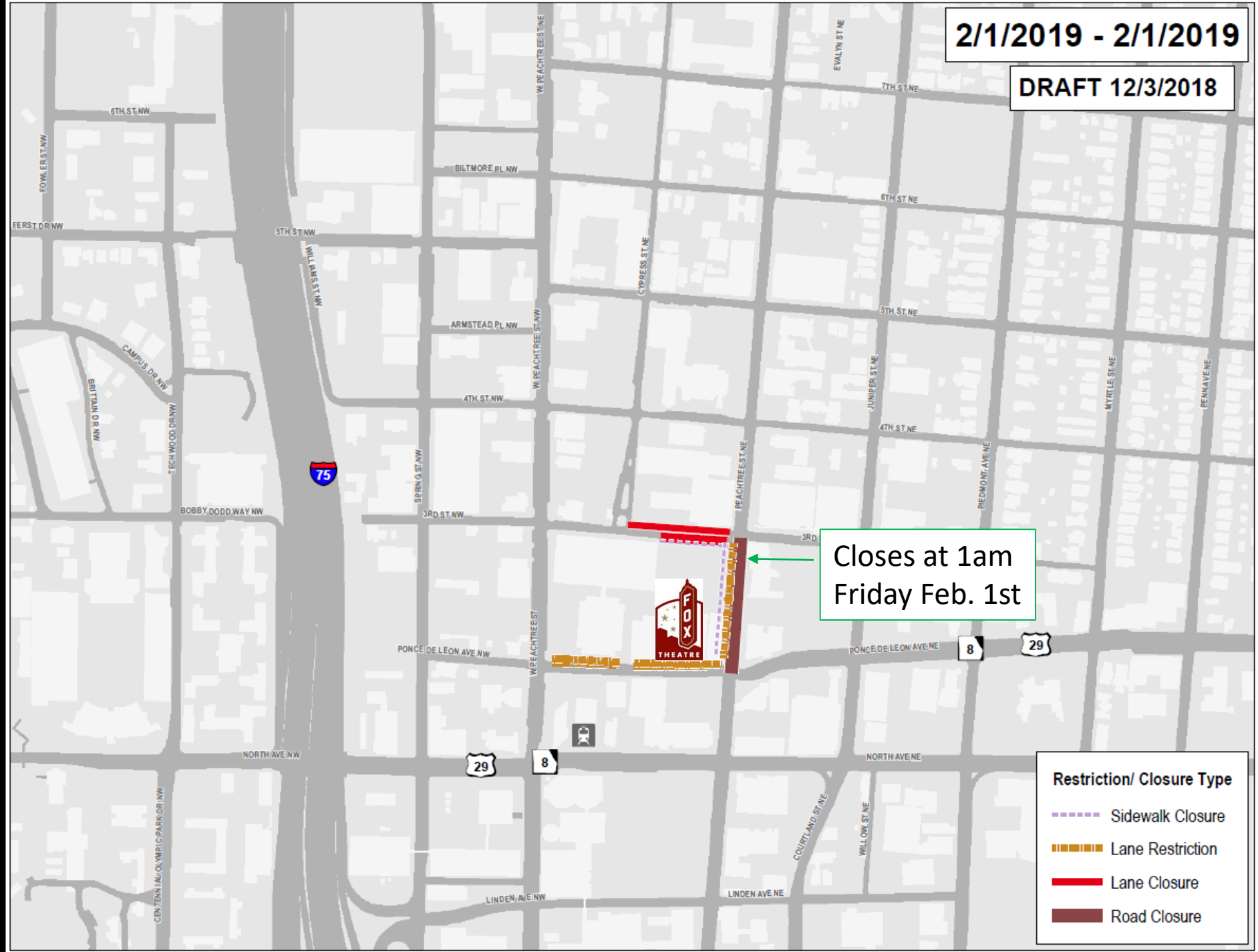
1/28/2019 - 1/28/2019

DRAFT 12/3/2018



2/1/2019 - 2/1/2019

DRAFT 12/3/2018



Closes at 1am
Friday Feb. 1st

Restriction/ Closure Type

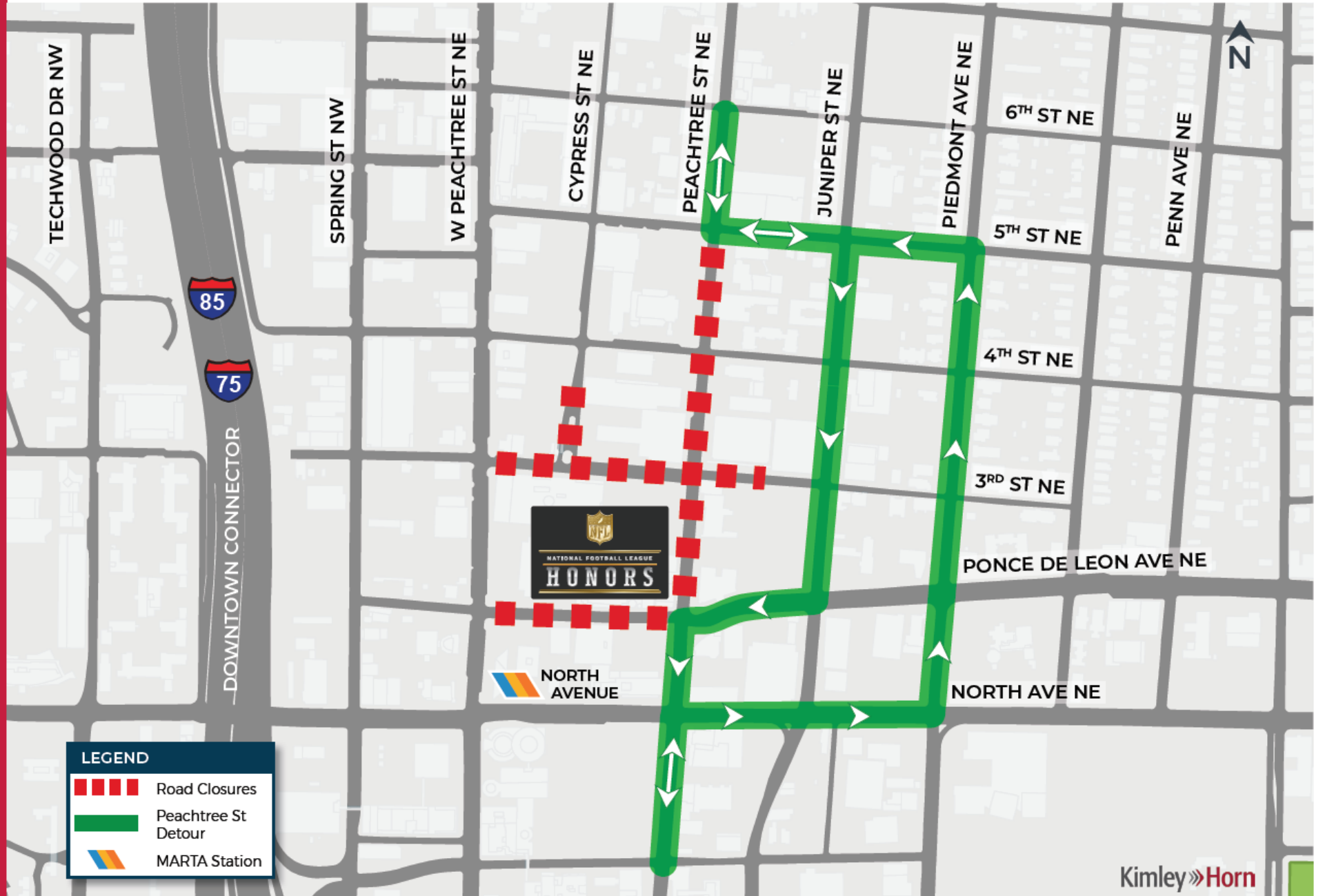
- Sidewalk Closure
- Lane Restriction
- Lane Closure
- Road Closure



NFL Honors

Proposed Road Closures and Detours

SATURDAY,
FEBRUARY 2, 2019



RIDESHARE PLAN





Super Bowl LIII

Rideshare Routes

SAT. JANUARY 26 -
SAT. FEBRUARY 2ND,
2019



ATLANTA
HOST TO SUPER BOWL LIII



MARTA - Extended Service

Rail service

Tuesday, Jan. 29 – Friday, Feb. 1
Friday, Feb. 1 – Tuesday, Feb. 5

Service starts at early at 4 a.m.
24 hours service begins at 4 a.m. on Friday
until 2 a.m. on Tuesday

Bus service

Tuesday, Jan. 29 – Friday, Feb. 1
Friday, Feb. 1 – Tuesday, Feb. 5

Will operate on a regular schedule
24 hour service begins at 4 a.m. on Friday
until 2 a.m. Tuesday on routes 15, 39, 83, & 96

Streetcar

Will operate on its regular schedule and will add an additional vehicle on Super Bowl
Sunday, Feb. 3.

THANK YOU

ATLSuperBowl53.com



@ATLSuperBowl53



ATLANTA

HOST TO SUPER BOWL LIII