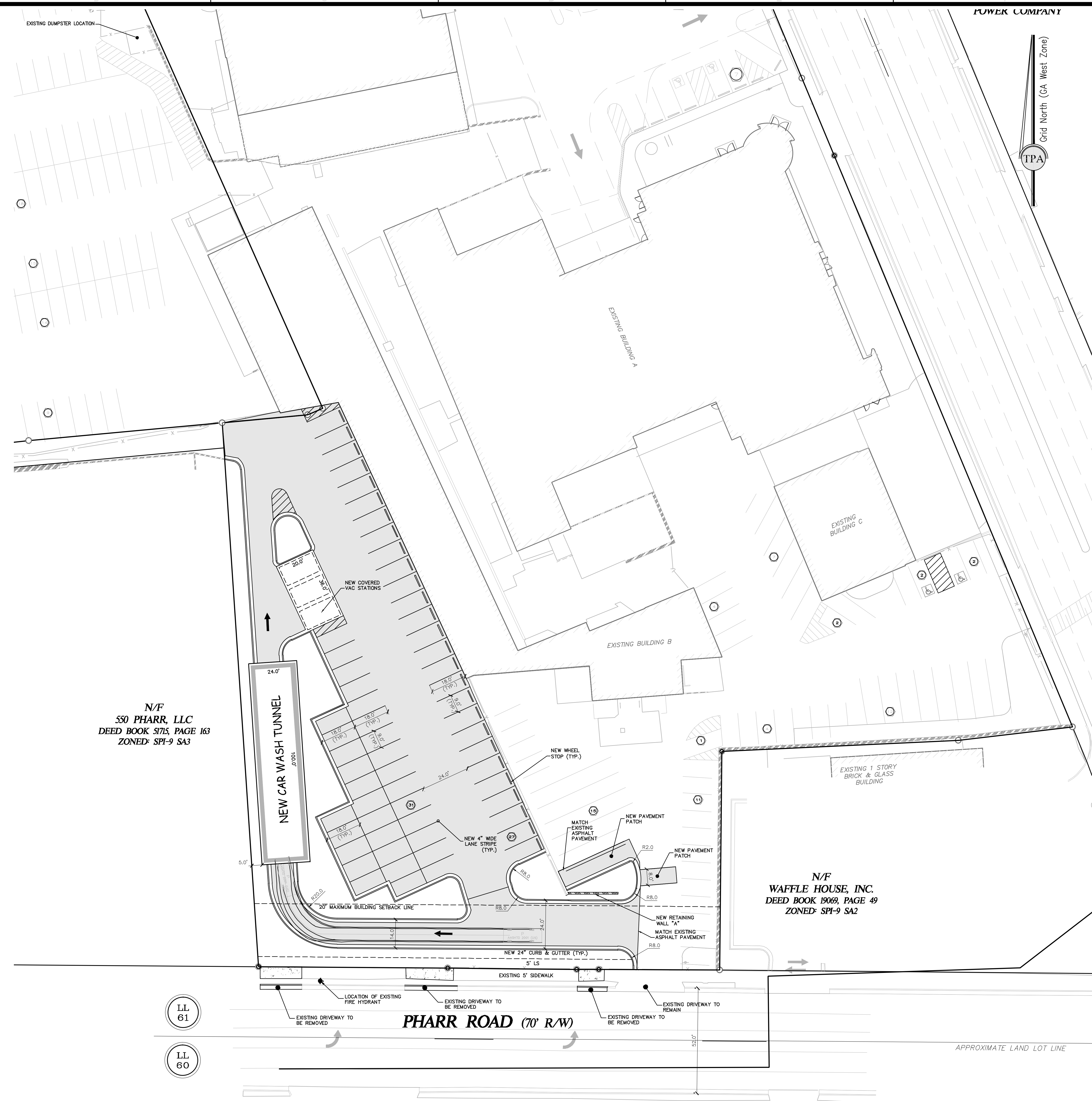


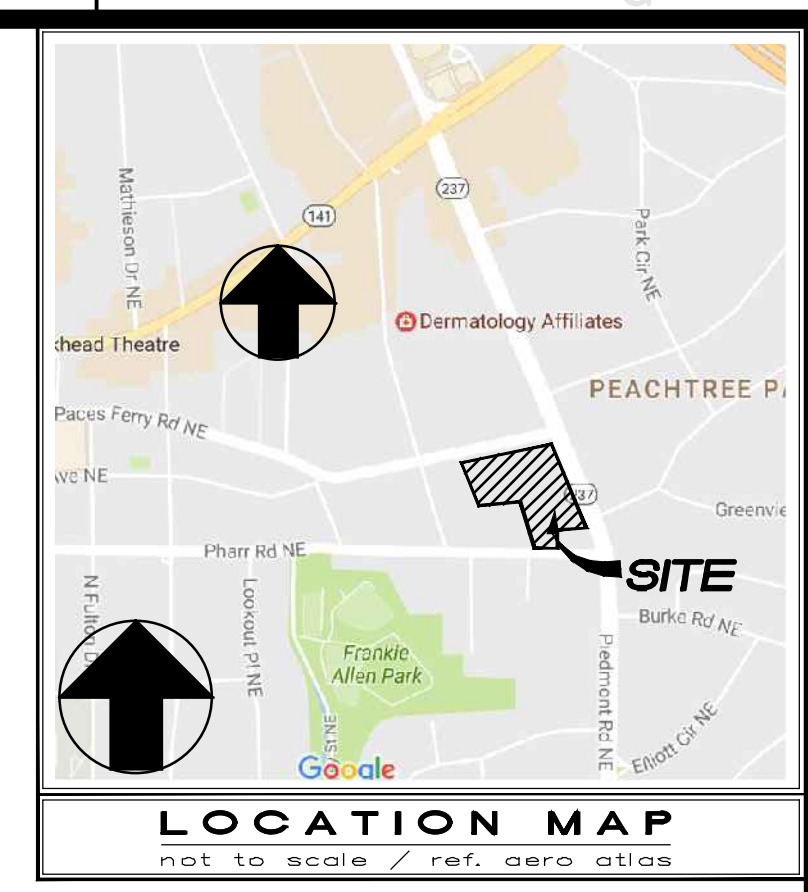
LEGEND

[Symbol]	EXIST. POWER POLE
[Symbol]	EXIST. POWER POLE W/ GUY WIRE
[Symbol]	EXIST. LIGHT STANDARDS
[Symbol]	EXIST. ELECTRIC BOX OR TRANSFORMER
[Symbol]	EXIST. WATER METER
[Symbol]	EXIST. WATER VALVE
[Symbol]	EXIST. UNKNOWN UTILITY STRUCTURE
[Symbol]	EXIST. TELEPHONE MONUMENT
[Symbol]	EXIST. TELEPHONE BOX
[Symbol]	EXIST. GAS METER
[Symbol]	EXIST. GAS VALVE
[Symbol]	EXIST. SANITARY SEWER MANHOLE
[Symbol]	EXIST. CLEAN OUT
[Symbol]	EXIST. JUNCTION BOX/STORM SEWER MANHOLE
[Symbol]	EXIST. CATCH BASIN
[Symbol]	EXIST. DROP INLET
[Symbol]	EXIST. STORM SEWER LINE
[Symbol]	EXIST. FLARED END SECTION
[Symbol]	EXIST. HARD INLET
[Symbol]	EXIST. SANITARY SEWER LINE
[Symbol]	EXIST. OVERHEAD POWER LINE
[Symbol]	EXIST. OVERHEAD TELEPHONE LINE
[Symbol]	APPROX. LOCATION UNDERGROUND POWER LINE
[Symbol]	APPROX. LOCATION UNDERGROUND TELEPHONE LINE
[Symbol]	APPROX. LOCATION UNDERGROUND GAS LINE
[Symbol]	APPROX. LOCATION UNDERGROUND WATER LINE
[Symbol]	APPROX. LOCATION CHILLED WATER LINE
[Symbol]	APPROX. LOCATION STEAM WATER LINE
[Symbol]	EXIST. FENCE LINE (AS NOTED)
[Symbol]	EXIST. SIGN (AS NOTED)
[Symbol]	EXIST. TREE (AS NOTED)
[Symbol]	TEMPORARY BENCHMARK (TBM)
[Symbol]	CONCRETE MONUMENT FOUND
[Symbol]	PROPERTY CORNER
[Symbol]	FIELD LOCATED PIN (AS NOTED)
[Symbol]	EXIST. SPOT ELEVATION
[Symbol]	EXIST. CONTOUR ELEVATION
[Symbol]	IRON PIN SET (1/2" REBAR)
[Symbol]	IPS
[Symbol]	P.O.B.
[Symbol]	R/W
[Symbol]	N/T
[Symbol]	BSL
[Symbol]	D.B.
[Symbol]	P.C.
[Symbol]	T.C.
[Symbol]	B.C.
[Symbol]	RCP
[Symbol]	CMP
[Symbol]	PVC
[Symbol]	DIP
[Symbol]	HDPE
[Symbol]	HDPE
[Symbol]	INVERT
[Symbol]	THRT
[Symbol]	CONC.
[Symbol]	C&G
[Symbol]	NEW STORM SEWER
[Symbol]	NEW FIRE HYDRANT
[Symbol]	NEW DROP INLET
[Symbol]	NEW CATCH BASIN
[Symbol]	NEW MANHOLE
[Symbol]	NEW CLEANOUT
[Symbol]	NEW SPOT ELEVATION
[Symbol]	NEW CONTOUR
[Symbol]	NEW NUMBER OF PARKING SPACES
[Symbol]	STORM STRUCTURE IDENTIFICATION
[Symbol]	SANITARY STRUCTURE IDENTIFICATION
[Symbol]	NEW ASPHALT PAVEMENT
[Symbol]	NEW CONCRETE SIDEWALK
[Symbol]	NEW CONCRETE PAVEMENT
[Symbol]	HEAVY DUTY ASPHALT PAVEMENT
[Symbol]	EXISTING PAVEMENT/ C&G TO BE REMOVED
[Symbol]	STRUCTURES/ITEMS TO BE REMOVED
[Symbol]	TRAFFIC DIRECTION ARROWS (FOR INFORMATION ONLY)
[Symbol]	NEW HANDICAP SYMBOL



N/F
550 PHARR, LLC
DEED BOOK 51715, PAGE 163
ZONED: SPI-9 SA3

N/F
WAFFLE HOUSE, INC.
DEED BOOK 19069, PAGE 49
ZONED: SPI-9 SA2



OWNER/DEVELOPER
HENNESSY CADILLAC, INC.
3040 PIEDMONT ROAD
ATLANTA, GA. 30305
24 HOUR EMERGENCY CONTACT
MR. MARK HENNESSY
404-261-5700

SITE AREA:
5.4 ACRES

TAX PARCEL ID:
17 006100101071
17 006100101063
17 0061001010677
17 0061001010701

SITE ZONING: SPI-9 SA2 & SPI-9 SA3

BUILDING SUMMARY:
EXISTING JAGUAR SHOWROOM BUILDING - 39,416 SF
MAINTENANCE SHOP - 14,655 SF
ROLLS ROYCE SHOP - 3,125 SF
LAND ROVER SHOWROOM - 10,107 SF
TOTAL GROSS FLOOR AREA: 67,303 SF

PARKING SUMMARY:

	REQUIRED	EXISTING	PROPOSED
REGULAR PARKING:	65	65	65
HANDICAP PARKING:	2	2	2
TOTAL PARKING SPACES:	337	67	67

*ONE SPACE PER 200 SQUARE FEET OF GROSS FLOOR AREA.

NO.	DATE	DESCRIPTION	BY
1			
2			
3			
4			
5			
6			
7			
8			
9			
10			

CONCEPT PLAN

Hennessy Buckhead Site Improvements

LAND LOT 61, 17TH DISTRICT, CITY OF ATLANTA, FULTON COUNTY, GEORGIA

Released for Construction

THERE ARE NO STATE WATERS WITHIN 200 FEET OF THE SITE.

THERE ARE NO WETLANDS ON THE SITE.

FLOOD HAZARD NOTE:
This property does not lie within a 100 year flood hazard zone as defined by the F.E.M.A. Flood Insurance Rate Map of Fulton County Community Panel Number 131510202A, dated SEPTEMBER 18, 2013.

Information regarding the proposed project, size, character and location of existing underground utilities and structures is shown herein. These data are the property of the utility companies and shall be considered in that light by those using this drawing. The location and arrangement of underground utilities and structures shown herein may be inaccurate and utilities and structures not shown may be encountered. The contractor shall verify the location and depth of all underground utilities and structures prior to construction and shall be responsible for the correctness or sufficiency of this information.

NOTE: CONTRACTOR SHALL VERIFY THE LOCATION OF ALL UTILITIES. ELEVATIONS REFER TO CONSTRUCTION. NOTIFY ENGINEER OF ALL DISCREPANCIES OR ADDITIONAL UTILITIES ENCOUNTERED.

NOTE: ALL CURB RADI ARE "S", UNLESS OTHERWISE NOTED.

NOTE: ALL DIMENSIONS ARE TO FACE OF CURB, FACE OF BUILDING OR CENTER OF STRUCTURE, UNLESS OTHERWISE NOTED.

NOTE: ALL PIPE LENGTHS ARE SCALED LENGTHS FROM CENTERS OF STRUCTURE. CONTRACTOR SHALL VERIFY PRIOR TO GRADING AND

© Copyright 2017
Travis Pruitt & Associates, Inc.
THESE DRAWINGS AND THEIR REPRODUCTIONS ARE THE PROPERTY OF THE ENGINEER AND MAY NOT BE REPRODUCED, PUBLISHED, OR USED IN ANY WAY WITHOUT THE WRITTEN PERMISSION OF THIS ENGINEER.

