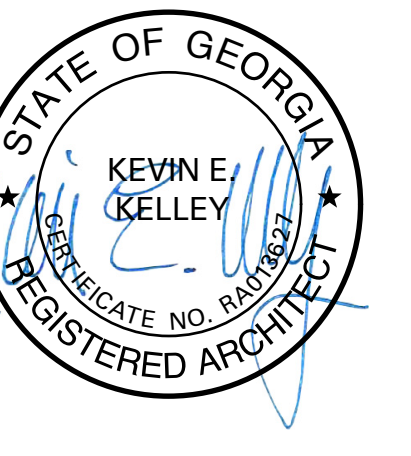


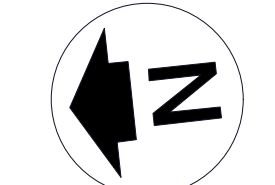
ISSUED FOR CONSTRUCTION



USAA®
USAA FINANCIAL CENTER
ATLANTA

3050 PEACHTREE ROAD NW, SUITES 140, 145, 150
ATLANTA, GA 30305

Drawings Prepared For:
USAA
9800 Fredericksburg Rd.
San Antonio, TX 78288



Mark	Date	Description
4	08.26.15	Addendum #1
3	07.31.15	100% Permit & Bid
2	07.23.15	90% CD
1	05.22.15	100% DD

This Drawing is the property of Shook Kelley, Inc. and is not to be reproduced in whole or in part. It is to be used for the project and site specifically identified herein and are not to be used on any other project. This Drawing is to be returned upon the written request of Shook Kelley, Inc.

Copyright 2011 Shook Kelley, Inc. All Rights Reserved. **shook kelley**

Project name: USAA ATLANTA 13025
CAD File Name: USAA WMATL_Fir_Fir.vwx
Issue Date: 08.26.15

CONSTRUCTION PLAN
FIRST FLOOR

Scale: 3/16"=1'-0"

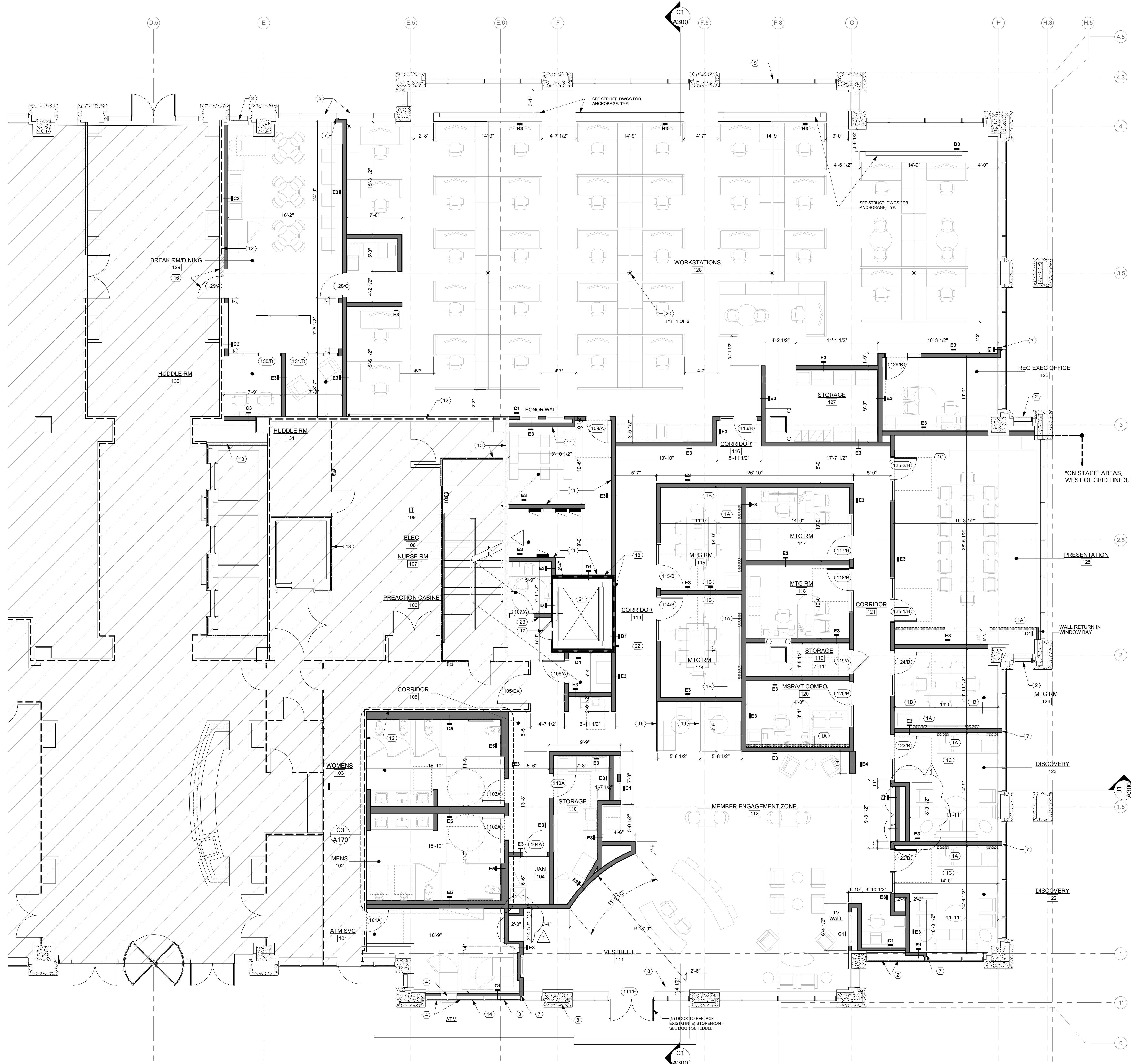
A110

GENERAL NOTES:

- SEE SHEET A500 FOR DOOR & WINDOW SCHEDULE, TYPES & DETAILS
- SEE SHEET A550 FOR WALL PARTITION DETAILS
- PARTITIONS ARE DIMENSIONED FROM FINISH FACE TO FINISH FACE U.N.O.
- MAINTAIN DIMENSIONS MARKED "CLEAR" / "CLR." ALLOW FOR THICKNESS OF FINISHES TYP.
- COORDINATE AND PROVIDE BACKING FOR MILLWORK AND ITEMS ATTACHED OR MOUNTED TO WALLS & CEILINGS TYP. (IE. SIGNAGE / DECOR ELEMENTS)
- WHERE EXISTING ACCESS PANELS CONFLICT WITH CONSTRUCTION, RELOCATE PANELS TO ALIGN AND FIT WITHIN NEW CONSTRUCTION.
- PROVIDE CONTINUOUS BLOCKING IN WALL 53"-68" A.F.F. AT FURNITURE SYSTEM OVERHEAD CABINET LOCATIONS TYPICAL.
- PROVIDE LEVEL 5 FINISH TYPICAL AT CENTRAL SPACE / OPEN AREA / PUBLIC HALLWAY. WALLS WHERE MARKETING GRAPHICS / PHOTOGRAPHY OCCUR.
- SLIDING DOOR / WINDOW WALL "DIRT" SYSTEM BY OTHERS TYP.
- COORDINATE ANY FIELD DIMENSION DISCREPANCIES WITH ARCHITECT TYP.
- LOCATE HINGE SIDE OF ALL DOORS 4" FROM ADJACENT PERPENDICULAR PARTITION U.N.O.
- SMOOTH AND PREPARE SURFACE FOR NEW FINISHES AT DEMOLITION LOCATIONS.
- SEE SHEET A012 FOR TYPICAL MOUNTING LOCATIONS / ALIGNMENTS.
- GC TO VERIFY EXISTING SLAB CONDITION AND FLOAT / PREPARE AS REQUIRED TO MEET MANUFACTURER'S CRITERIA FOR FLOORING INSTALLATION TYPICAL.
- SEE A012 FOR ADA CLEARANCES TYP.
- GC TO PROVIDE BLOCKING AS REQUIRED TYP. FOR ALL DECOR / SIGNAGE ELEMENTS. REFER TO ENVIRONMENTAL GRAPHICS DWGS. FOR LOCATIONS TYP.
- MOVEABLE WALL SYSTEM BY OTHERS. GC PROVIDE BLOCKING & SUPPORT AT ATTACHMENT POINTS WHERE REQUIRED. COORD. INSTALL WITH VENDOR.
- WALL FRAMING & GYP. BD. AT I/ELECT. ROOM & ATM SERVICE ROOMS TO EXTEND TO DECK ABOVE TYP.
- REPLACE EXISTING INSULATION AT CONCRETE STRUCTURE WHERE REMOVED.
- SEE DOOR SCHEDULE FOR DIRT DOOR CLR OPENING DIMENSIONS.
- NOT USED.
- ALL EXISTING FIREPROOFING TO REMAIN. TOUCH UP AS NEEDED WHERE DAMAGED/STEEL IS EXPOSED, TO MEET EXISTING FIRE RATINGS OF MEMBERS, TYP.
- TYPICAL AT "ON STAGE" AREAS. ALL OUTSIDE CORNER VERTICAL WALL LOCATIONS, PROVIDE 1" ALUMINUM CORNER GUARDS. CLR. ALUM. MILL FINISH. SURFACE APPLIED, 90 DEGREE PROFILE, 8" LENGTH. CONFIRM FINAL PLACEMENT AND LOCATIONS WITH USAA. "OFF STAGE" (NON MEMBER FACING) AREAS TO RECEIVE CLR ACRYLIC CORNER GUARDS, TYP.
- (E) GYP. FURR OUTS AT (E) COLUMNS TO REMAIN U.N.O. REPAIR & REPLACE GYP. AS NEEDED WHERE CONCRETE IS EXPOSED.

KEY NOTES:

- MOVEABLE WALL SYSTEM BY OTHERS. GC TO PROVIDE BLOCKING & SUPPORT AT ATTACHMENT POINTS WHERE REQUIRED. COORD. INSTALL WITH VENDOR.
- CABINET TOWER BY OTHERS. GC TO PROVIDE BLOCKING & SUPPORT AT ATTACHMENT POINTS WHERE REQUIRED. COORD. INSTALL WITH VENDOR.
- CREDENZA BY OTHERS. GC TO PROVIDE BLOCKING & SUPPORT AT ATTACHMENT POINTS WHERE REQUIRED. COORD. INSTALL WITH VENDOR.
- SPANDREL GLASS PANEL INFILL TO REPLACE GLAZING THIS SECTION. COLOR TO BE COORD. W/ ARCHITECT & APPROVED BY LANDLORD.
- 1" COMPOSITE ALUM. INFILL PANEL INFILL TO REPLACE GLAZING AT ATM RM. SEE DETAIL A4/A561
- REMOVE (E) VERT. MULLION AT ATM
- REMOVE (E) DOORS AND PROVIDE NEW STOREFRONT AND GLAZING. REPLACE/REPAIR CURB BELOW STOREFRONT. SEE DETAIL D2/A561
- NOT USED.
- CONTINUE WALL TO MULLION AND TRANSOM ABOVE. SEE DETAIL C3/A561
- ADA PUSH BUTTON DOOR OPEN. SEE DOOR SCHEDULE. WALL MOUNTED AT EXTERIOR LOCATION AND FLOOR POST MOUNTED AT INTERIOR LOCATION. LOCATE ACTIVATION SWITCH MAX. 12" FROM CENTER OF DOOR OPENING.
- NOT USED
- NOT USED
- CONTINUE ALL WALLS OF IT & ELEC RM TO DECK ABV.
- (E) 1-HR RATED WALL. MAINTAIN RATING @ ALL NEW PENETRATIONS.
- (E) 2-HR RATED WALL. MAINTAIN RATING @ ALL NEW PENETRATIONS.
- GC TO INSTALL OWNER PROVIDED ATM SURVEILLANCE SIGNAGE. COORDINATE LOCATION W/ OWNER.
- BUILD OUT AT WALL BASE FOR PWR/DATA. SEE DETAIL D2/A561 & ELEC. DWGS.
- NEW SINGLE LEAF DOOR. SEE DOOR SCHEDULE. REMOVE (E) DOUBLE DOOR. PATCH AND REPAIR OPENING TO MATCH ADJ. WALL SURFACES. MAINTAIN 1-HR WALL RATING
- 30" X 30" ACCESS RATED ACCESS PANEL
- REMOVE (E) ELEVATOR GLASS WALLS. PROVIDE NEW 2HR RATED SHAFT ENCLOSURE
- 1/2" THK. LAMINATED GLASS DIVIDER
- POWER POLE. LOCATION SHOWN FOR REFERENCE ONLY. FINAL LOCATION TO BE VERIFIED WITH WORKSTATION INSTALLER
- (E) ELEVATOR TO BE DECOMMISSIONED. REMOVE EXISTING OIL AND PORTIONS OF OIL LINE AS REQUIRED. REMOVE FUSES TO DISCONNECT POWER SUPPLY. DISPOSE OF OIL PER EPA AND GEORGIA ENVIRONMENTAL PROTECTION DIVISION REQUIREMENTS
- PROVIDE 2 HR RATED ENCLOSURE AROUND (E) ELEVATOR. SEE SHT A550 FOR PARTITION TYPES
- ALUM. IN-USE / VACANT SIGN PROVIDED BY USAA. MOUNT W/ DOUBLE STICK TAPE TO WALL. 60" AFF. CTR. ABV. CARD READER LOCATION.

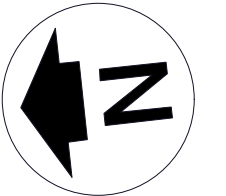


ISSUED FOR CONSTRUCTION



3050 PEACHTREE ROAD NW, SUITES 140, 145, 150
ATLANTA, GA 30305

Drawings Prepared For:
USAA
9800 Fredericksburg Rd.
San Antonio, TX 78288



Mark	Date	Description
3	07.31.15	100% Permit & Bid
2	07.23.15	90% CD
1	05.22.15	100% DD

This Drawing is the property of Shook Kelley, Inc. and is not to be reproduced in whole or in part. It is to be used for the project and site specifically identified herein and are not to be used on any other project. This Drawing is to be returned upon the written request of Shook Kelley, Inc.

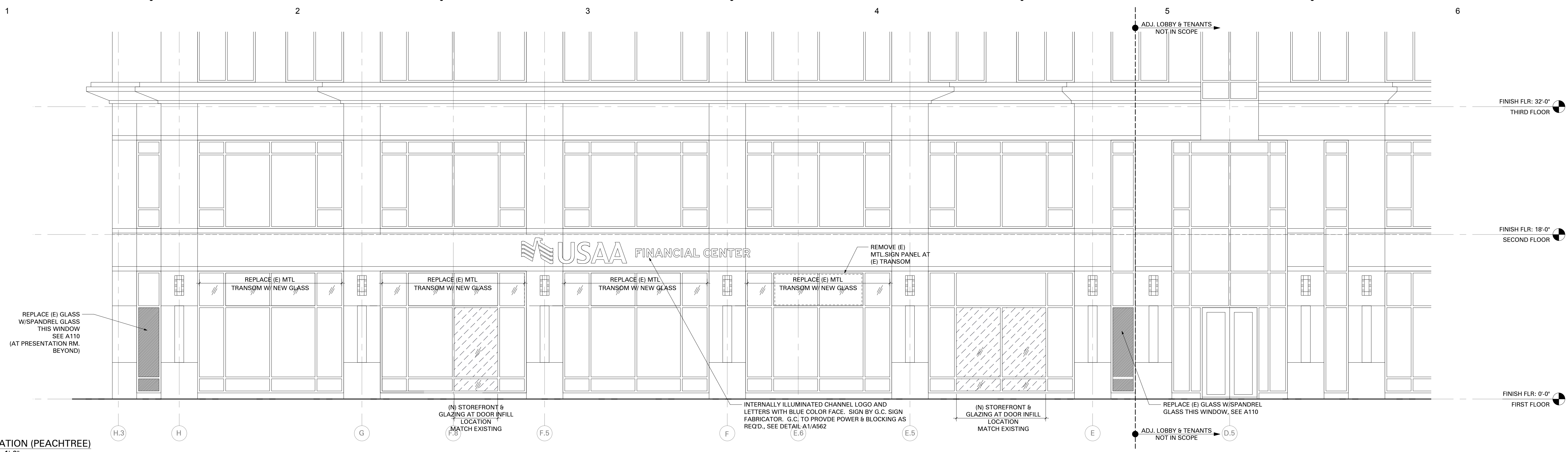
Copyright 2011 Shook Kelley, Inc. All Rights Reserved. **shook kelley**

Project name#: USAA Atlanta / 13025
CAD File Name: USAA WMATL_Exterior Elevations.vwx
Issue Date: 07.31.15

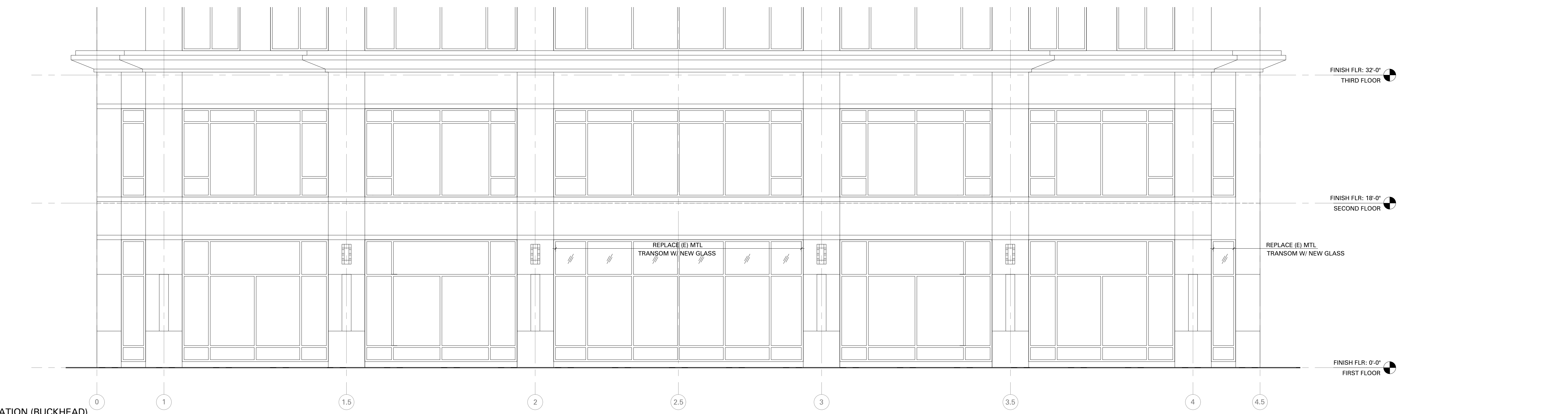
EXTERIOR ELEVATIONS

Scale: 3/16"=1'-0"

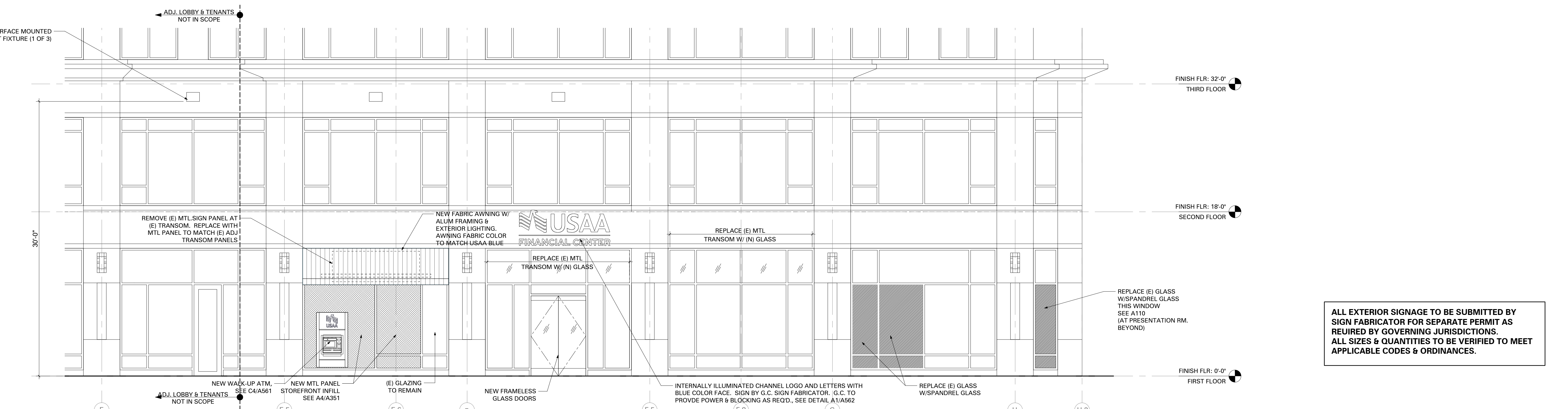
A200



D1 EAST ELEVATION (PEACHTREE)
Scale: 3/16" = 1'-0"



D1 SOUTH ELEVATION (BUCKHEAD)
Scale: 3/16" = 1'-0"



A1 WEST ELEVATION (GARAGE)
Scale: 3/16" = 1'-0"

ALL EXTERIOR SIGNAGE TO BE SUBMITTED BY SIGN FABRICATOR FOR SEPARATE PERMIT AS REQUIRED BY GOVERNING JURISDICTIONS. ALL SIZES & QUANTITIES TO BE VERIFIED TO MEET APPLICABLE CODES & ORDINANCES.