

CONFIDENTIAL sprinkles beverly hills exterior signage 28 June 2013 © a | m object



1 primary exterior business identification sign (see page 5) 2 cupcake atm business identification sign (see page 6) 3 perforated metal cladding over EIFS pier wall 4 perforated metal, powdercoated, over EIFS wall
 5 tempered glass storefront 6 metal awning with scalloped edge, powdercoated 7 cantilevered bench

view from parking lot





DO NOT SCALE DRAWINGS
 CONTRACTOR TO VERIFY
 ALL EXISTING CONDITIONS AND
 DIMENSIONS-NOTIFY ARCHITECT
 OF ANY DISCREPANCIES PRIOR
 TO BEGINNING CONSTRUCTION



SEP 25 2013

NO REVISION

08/12/13 OWNER / CITY COMMENTS

08/12/13 U/HEALTH/OWNER COMMENTS

07/08/13 RELEASED FOR CONSTRUCTION

PROJECT NUMBER
130334.001

SHEET NUMBER

A-101

DATE OF THIS PRINTING - 09/09/13

GENERAL ACCESSIBILITY NOTES

While it is the intent of the Architect, his employees, and assigns to adhere to all aspects and regulations of the Americans with Disabilities Act (ADA) and local accessibility codes, the Contractor shall not be relieved of sole responsibility to verify all requirements of said acts as pertaining to contract documents contained herein prior to commencement of any work. He shall also be responsible to immediately notify Designer of possible discrepancies. He shall also pay special attention to items listed below:

1. The bottom 10" of all doors shall have a smooth uninterrupted surface to allow door to be opened by a wheelchair footrest.
2. No threshold shall exceed 1/2" in height.
3. Hand-operated door opening hardware shall not require tight grasping or twisting of the wrist in order to operate, and shall be mounted no higher than 48" A.F.F.
4. Maximum force required to open exterior doors shall not exceed 5 lbs. Maximum force required to open interior doors shall not exceed 5 lbs.
5. If a door has a closer, then the sweep period of the closer shall be adjusted so that from an open position of 70 degrees, the door will take at least 3 seconds to move to a point 5 inches from the latch, measured to the leading edge of the door.
6. Lavatories shall have a minimum clearance of 29" from the floor to the bottom edge of the apron with a minimum knee clearance of 8" in depth x 30" in width. Toe clearance shall be no less than 17" deep from front edge of the lavatory.
7. Insulate or cover all plumbing under lavatories so that there are no sharp or abrasive surfaces.
8. Faucet control and operating mechanisms shall be operable with one hand and shall not require tight grasping, pinching, or twisting of the wrist. The force required to activate controls shall be no greater than 5 lbs. Lever operated, flush type and electronically operated mechanisms are examples of acceptable designs. If self closing valves are used, the faucet shall remain open for a minimum of 10 seconds.
9. Flush controls at water closets and urinals shall be operable as faucet controls are in #8 above, and shall be mounted no greater than 44" A.F.F. and shall be located on accessible side of Water Closet.
10. Provide signage with International symbol of accessibility in accordance with ANSI A117.1 (latest edition) and ADA requirements.
11. Restroom signage shall be mounted on the wall adjacent to the latch side of the respective restroom door @ 60" to center line - Max. 1'-0" off latch side of door off wall.

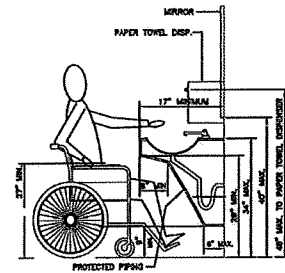


FIG. 31
(FROM ADA)

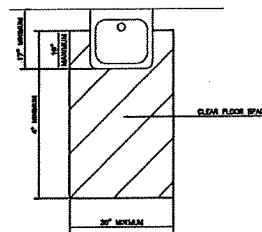
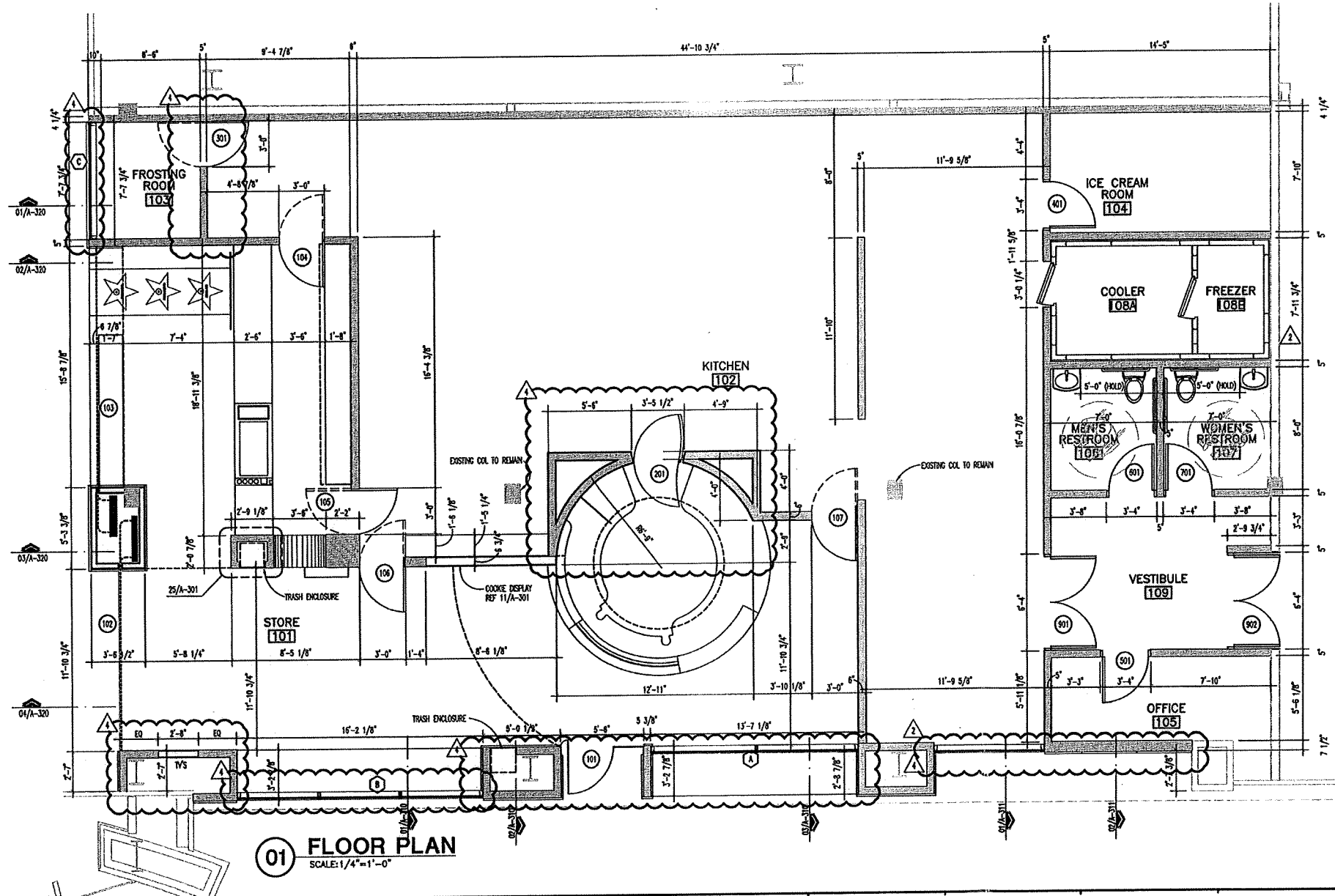


FIG. 32
(FROM ADA)

WALL LEGEND (REFERS TO CONSTRUCTION PLAN ONLY)

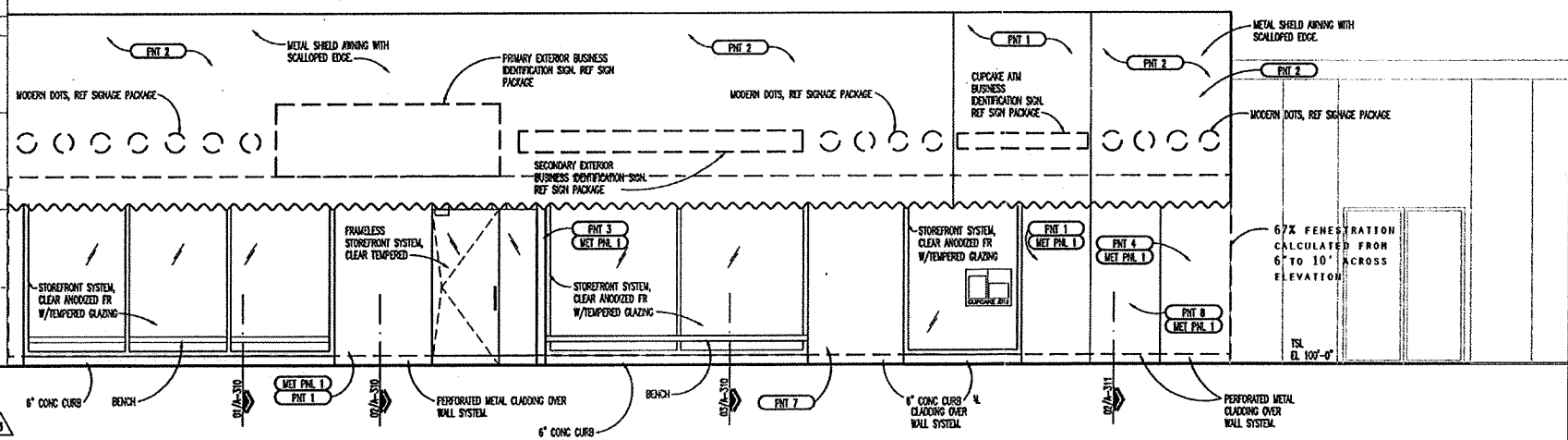
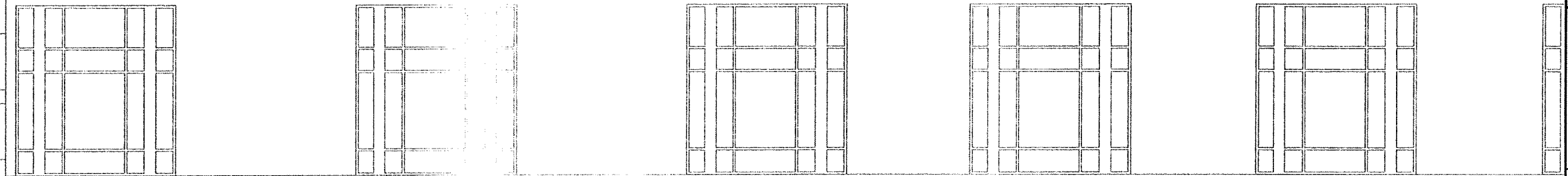
	EXISTING WALL TO REMAIN.
	INTERIOR, NON LOAD BEARING PARTN. 22 GA. 3 8/9" AML STUDS (LWD) @ 16" OC TO UNDER SIDE OF DECK. INSTALL 5/8" CIP BD BOTH SIDES TO 12'-0" ABOVE FINISHED CEILING. BRACE AS REQ'D.



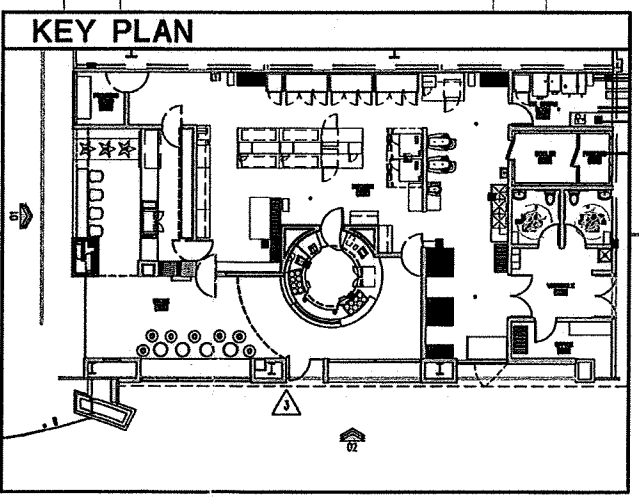
ITEM #	DESCRIPTION
TILE 1	6" X 6" QUARRY TILE
TILE 2	WHITE SUBWAY TILE
CONC 1	CLEAR, COMMERCIAL SEAL, WHITE
CONC 2	SD-1 CONCRETE, DARK GREY CONCRETE COLOR
SST 1	SPRINKLES WALK OF FAME - METAL
SST 2	BRUSHED SST
SS 1	WHITE CORIAN
EPoxy 1	FLOORING (FRESH FLOOR OVERLAY)
BASE 1	6" X 6" QUARRY TILE W/ 3/8" COVE TO MATCH FLOOR TILE
BASE 2	STAINLESS STEEL W/ 3/8" COVE
BASE 3	6" CERAMIC COVE BASE
FRP 1	WALFUTE P-199 BRIGHT WHITE
PLAM 1	WHITE OAK REY
GYP BO 1	SKIM COATED - LEVEL 4 FINISH, PREPARE FOR PAINT AS NOTED
ACT 1	T-8W, HEALTH DEPT. APPROVED WHITE CEILING TILE, NON PORUS, NON ABSORBENT, CLEANABLE, & LIGHT IN COLOR
MET PNL 1	PERFORATED METAL CLADDING, POWDERCOATED, OVER WALL SYSTEM
MET PNL 2	BRUSHED ALUMINUM (PAINTED)
PNT 1	PINK - PMS 197 RAL 3015
PNT 2	BROWN - PMS 175 RAL 8016
PNT 3	RED - PMS 186 RAL 3020
PNT 4	BLUE - PMS 3105 RAL 5027
PNT 5	YELLOW - PMS 108 RAL 1018
PNT 6	ORANGE - PMS 179 RAL 2004
PNT 7	NAVY - PMS 344 RAL 6018
PNT 8	GREEN - PMS 369 RAL 6018
PNT 9	WHITE - LEVEL 5 FINISH



01 MALL STOREFRONT ELEVATION
 SCALE: 1/4"=1'-0"



01 FRONT EXTERIOR ELEVATION
 SCALE: 1/4"=1'-0"



SPRINKLES CUPCAKES
 LENOX SQUARE
 SUITE 300S
 3888 PEACHTREE RD, NE
 ATLANTA, GA 30328



DO NOT SCALE DRAWINGS
 CONTRACTOR TO VERIFY
 ALL EXISTING CONDITIONS AND
 DIMENSIONS-NOTIFY ARCHITECT
 OF ANY DISCREPANCIES PRIOR
 TO BEGINNING CONSTRUCTION



NO REVISION

- 3 08/21/13 NO SET REVISIONS
- 4 09/19/13 LI/HEALTH/OWNER COMMENTS

PROJECT NUMBER
130334.001

SHEET NUMBER

A-201

07/08/13 RELEASED FOR CONSTRUCTION