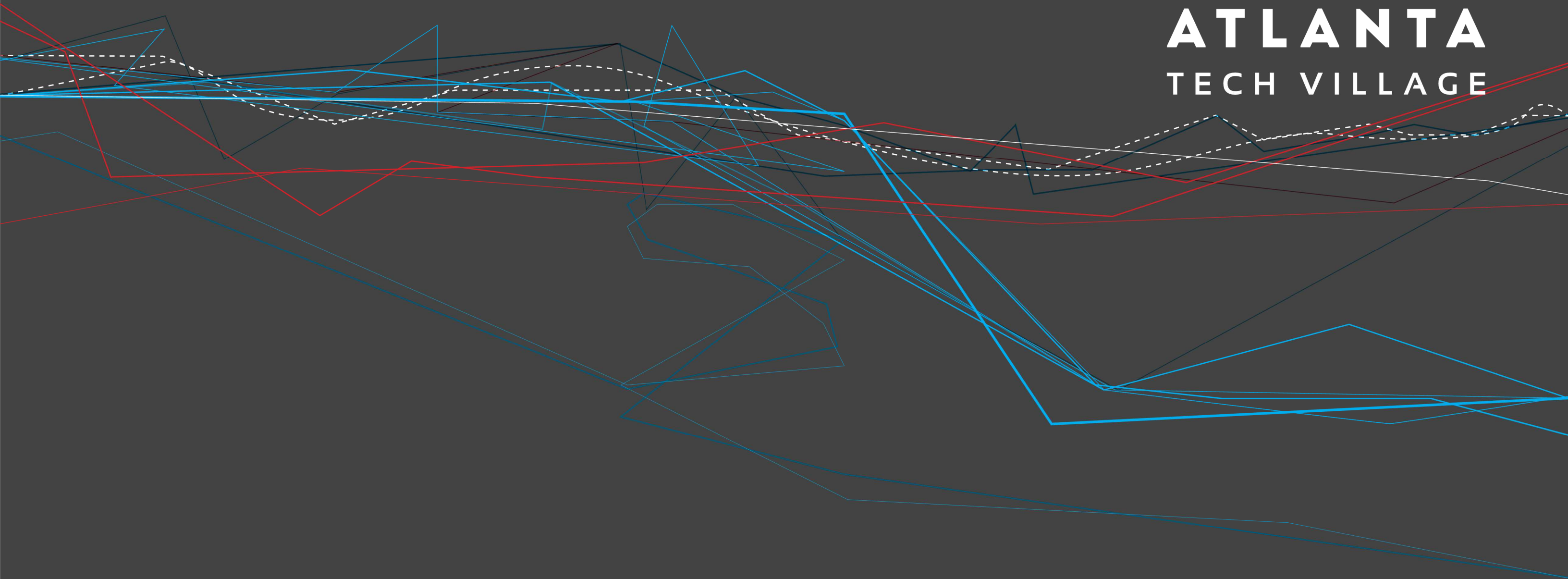


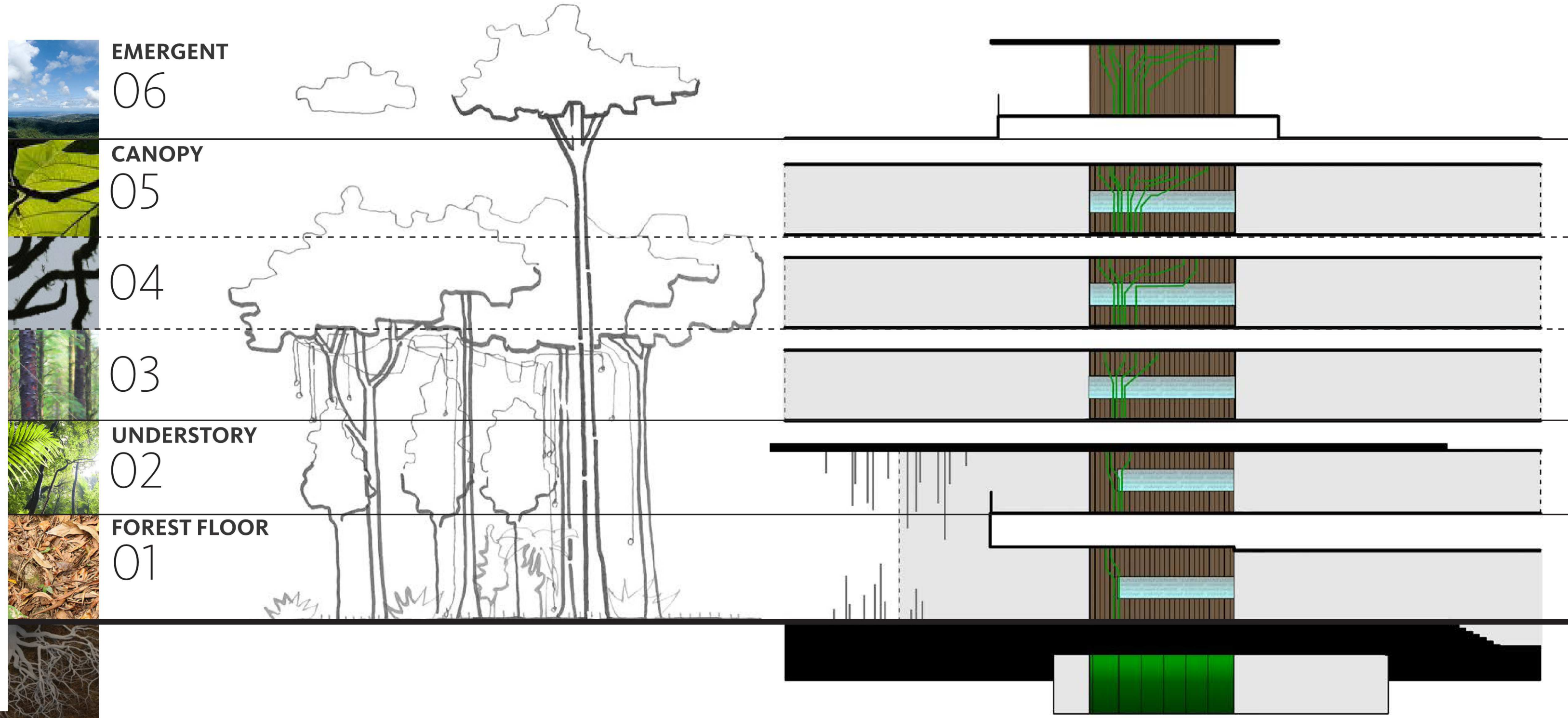


**ATLANTA**  
**TECH VILLAGE**

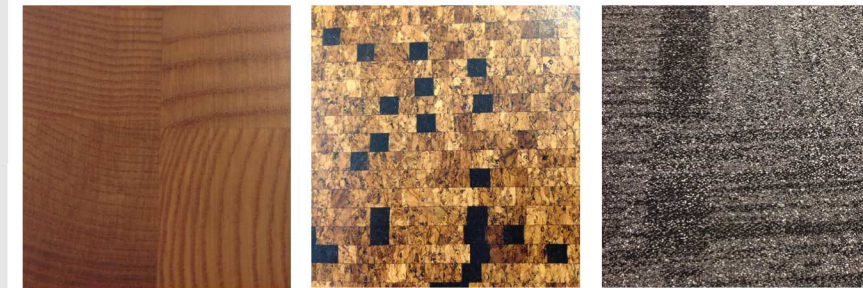
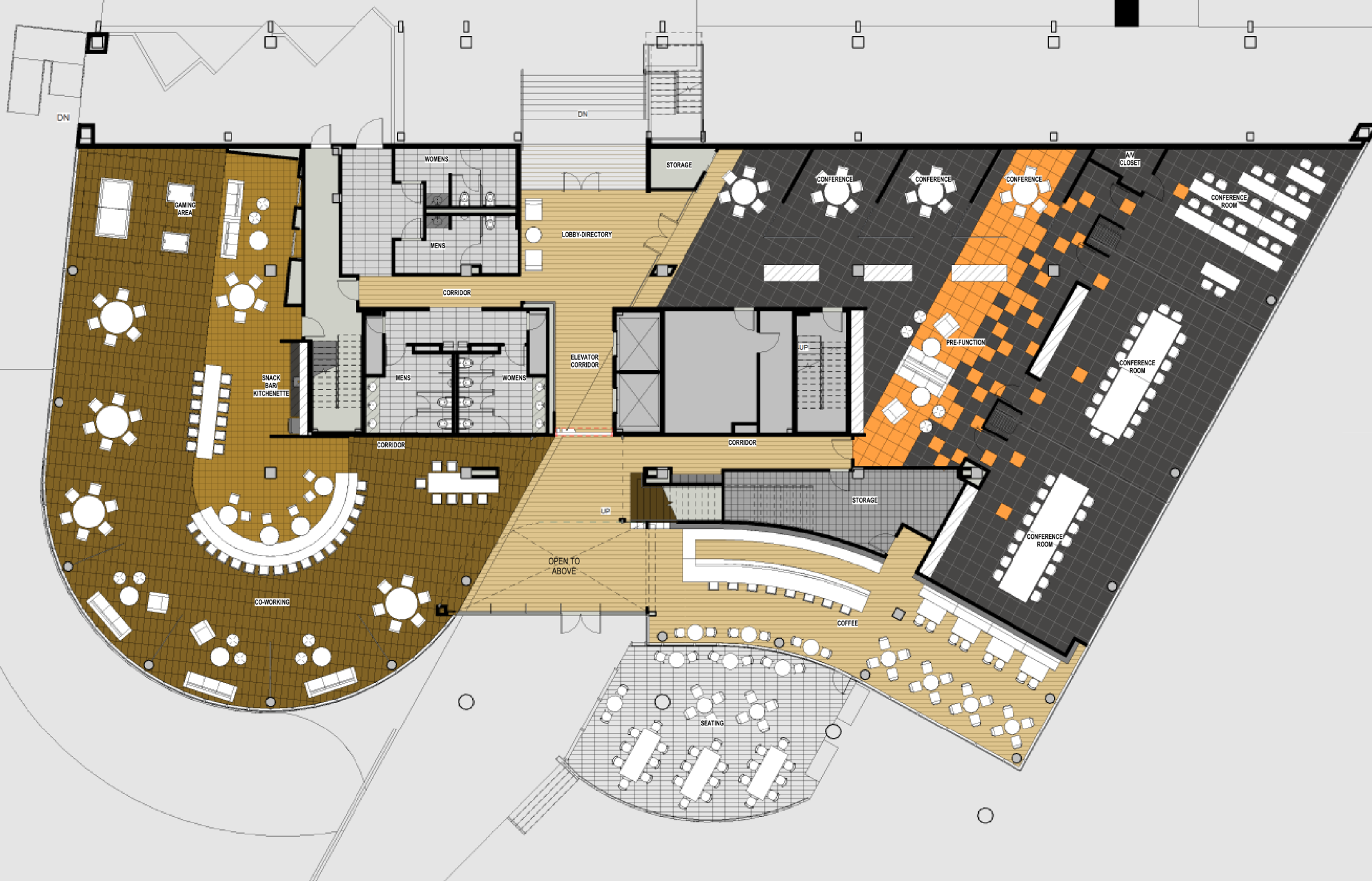


“Designing a Rainforest is about enhancing the quantum probabilities of innovation, not attempting to engineer perfection.”

# LAYERS OF THE RAINFOREST

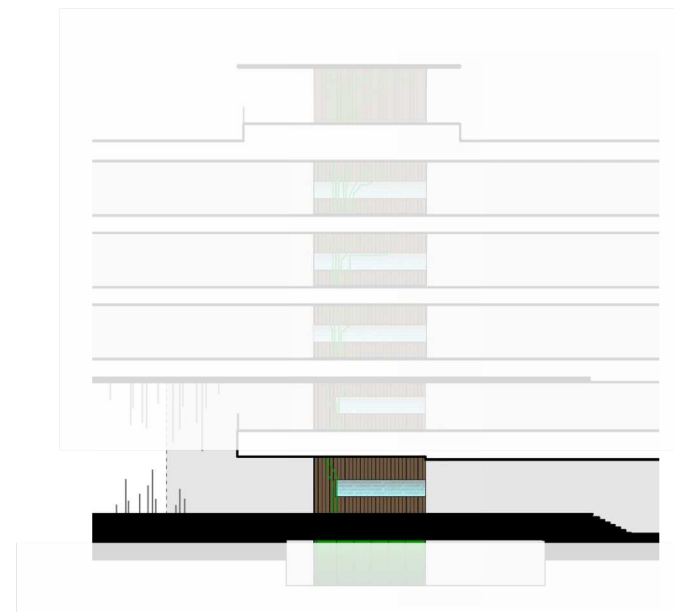




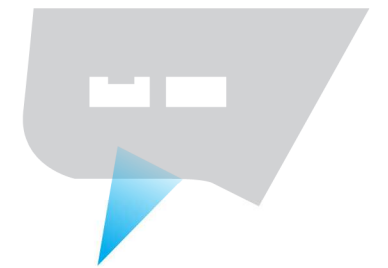


## FINISH PLAN

LEVEL 01  
FOREST FLOOR





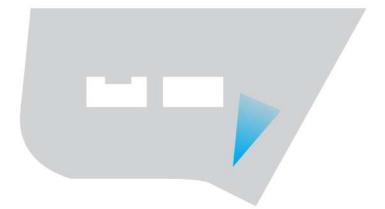


## PERSPECTIVE

### EXTERIOR ENTRY

“Imagine that you could see streaks of light that represent the web of human connections-like invisible Silk Roads...”





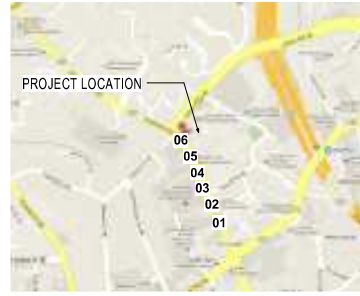
## PERSPECTIVE

### ROOF

“...we must account for millions of invisible, intangible interactions...From high above the treetops in the Rainforest, how can we possibly observe such microscopic interactions?”



**PIEDMONT STREET- NORTH APPROACH**



SITE PLAN



01/06 PIEDMONT STREET- NORTH APPROACH



02/06 PIEDMONT STREET- NORTH APPROACH



03/06 PIEDMONT STREET- NORTH APPROACH



04/06 PIEDMONT STREET- NORTH APPROACH



05/06 PIEDMONT STREET- NORTH APPROACH



06/06 PIEDMONT STREET- NORTH APPROACH

**KEY PLAN**



PROJECT LOCATION

**PIEDMONT STREET- SOUTH APPROACH**



SITE PLAN



01/06 PIEDMONT STREET- SOUTH APPROACH



02/06 PIEDMONT STREET- SOUTH APPROACH



03/06 PIEDMONT STREET- SOUTH APPROACH



04/06 PIEDMONT STREET- SOUTH APPROACH



05/06 PIEDMONT STREET- SOUTH APPROACH



06/06 PIEDMONT STREET- SOUTH APPROACH

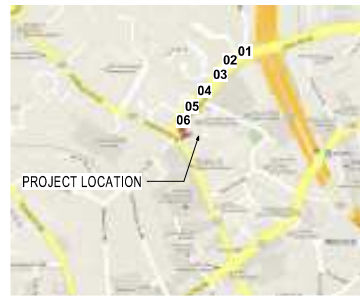
**PROPOSED BUILDING EXTERIOR**



REFINISH EXISTING  
GANITE VENEER  
WITH METAL PANEL

REPLACE GLAZING AT  
FIRST TWO LEVELS  
WITH CLEAR GLAZING

**LENOX ROAD- WEST APPROACH**



SITE PLAN



01/06 LENOX ROAD- WEST APPROACH



02/06 LENOX ROAD- WEST APPROACH



03/06 LENOX ROAD- WEST APPROACH



04/06 LENOX ROAD- WEST APPROACH



05/06 LENOX ROAD- WEST APPROACH



06/06 LENOX ROAD- WEST APPROACH

**EXISTING BUILDING EXTERIOR**



**ATV- Atlanta Tech Village**

3423 Piedmont Road NE,  
Atlanta, GA  
30305

999 Peachtree Street NE  
Suite 1400  
Atlanta GA 30309  
Tel: 404.507.1000  
Fax: 404.507.1001

**Gensler**

Revision	Date	Description	By	Check

Seal/Signature \_\_\_\_\_

Project Name  
FLOORS 3-5

Project Number  
13,725,100

Description  
PROPOSED BUILDING EXTERIOR

Scale \_\_\_\_\_

**PR5**  
© 2012 Gensler

PLT:RWB 5/10/12 8:33:25 AM  
FILE PATH AND NAME: I:\a\strevell\userfiles\sevtl\_user\_model\2013\156181\137255000\_interns\_atv\_v2013\_Corey Oventon.rvt



# ATLANTA TECH VILLAGE

## URBAN EXTERIOR RENOVATION - CONCEPTUAL DIAGRAM

MAY 1, 2013

### ELEMENTS OF DESIGN:

#### SEATING AREAS

- COUCHES, CHAIRS, SEAT WALLS

#### CAFE

- TABLE & CHAIRS, FENCING,

#### LANDSCAPE

- TREES, SHRUBS, GROUNDCOVER, PLANTERS

#### LIGHTING

- DECORATIVE AND FUNCTIONAL

#### FOUNTAIN

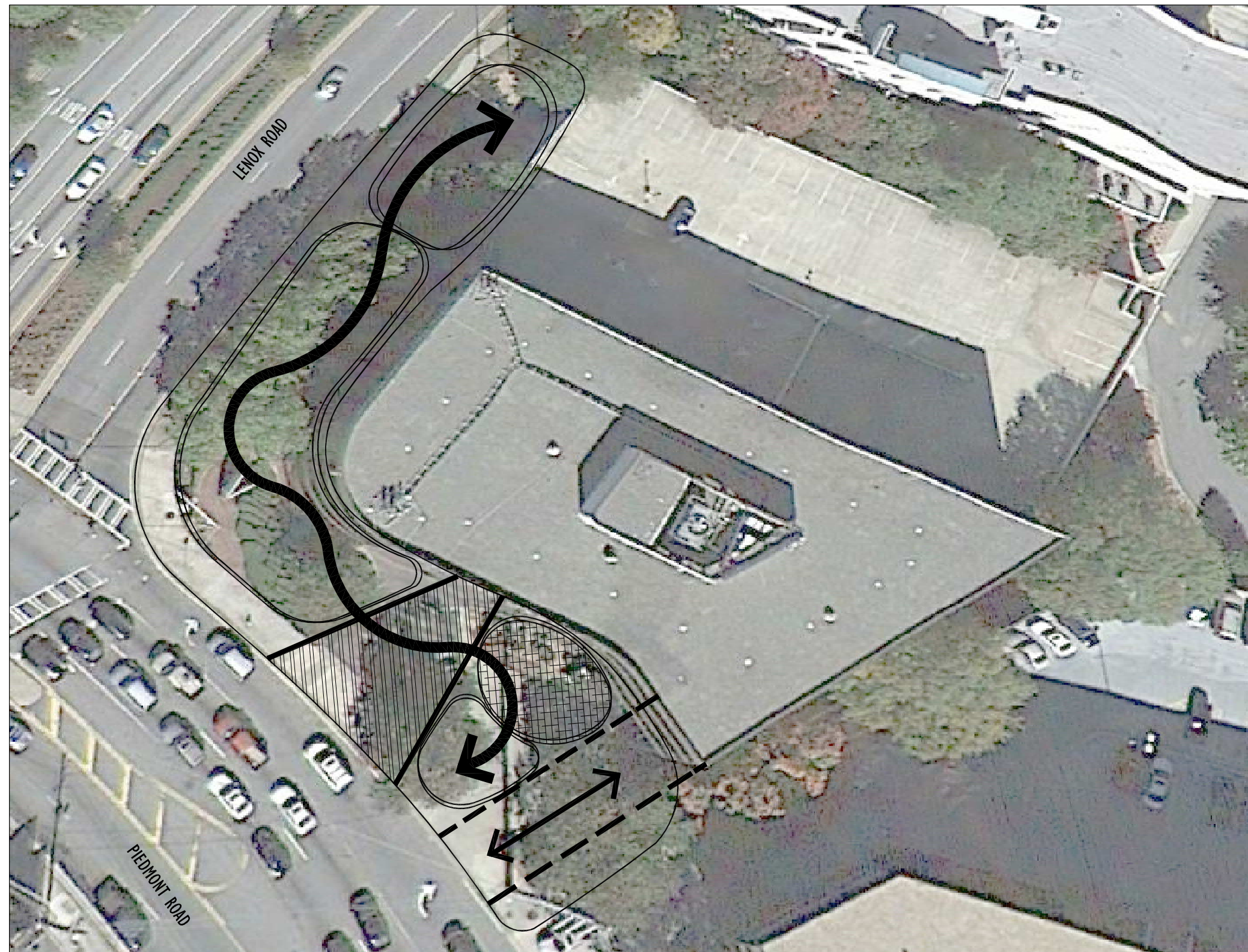
- ICONIC LANDMARK AND NOISE BUFFER

#### HARDSCAPE MATERIALS

- STONE, CONCRETE, GRANITE

### AREAS OF EMPHASIS:

- MAINTAIN TRUCK/ VEHICULAR ACCESS UNDER BUILDING
- DRAW FOCUS TO FRONT DOOR
- INCORPORATE CAFE UP NEXT TO BUILDING FACE
- DEFINE AREAS OF GATHERING AND CREATE A FREE FLOW MOTION CONNECTION BETWEEN THE SPACES
- UTILIZE LENOX ROAD SIDE OF BUILDING TO CREATE ADDITIONAL OUTDOOR SPACE



SCALE: NOT TO SCALE/ SCHEMATIC