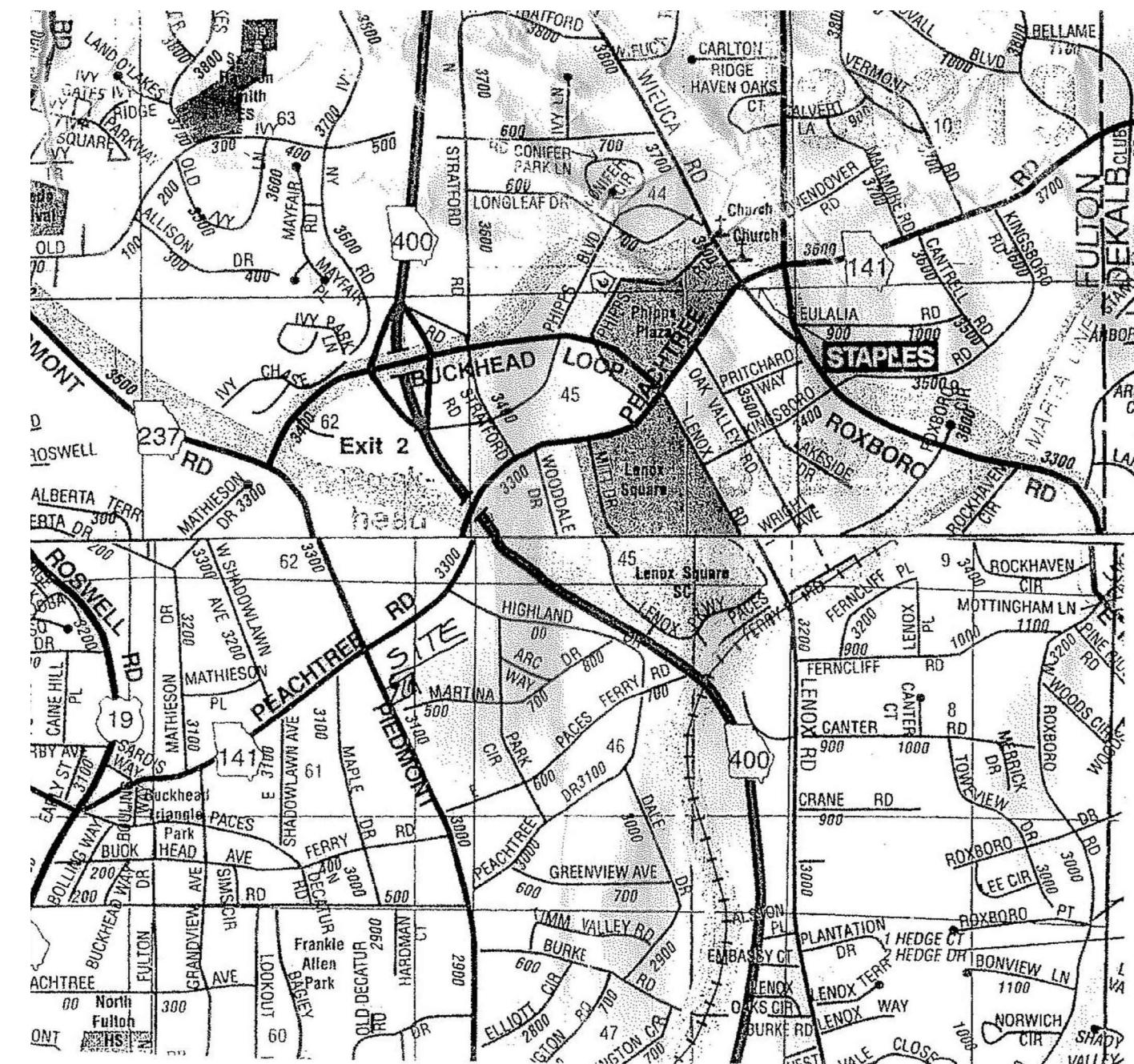


3135 PIEDMONT ROAD
ATLANTA , GA 30305

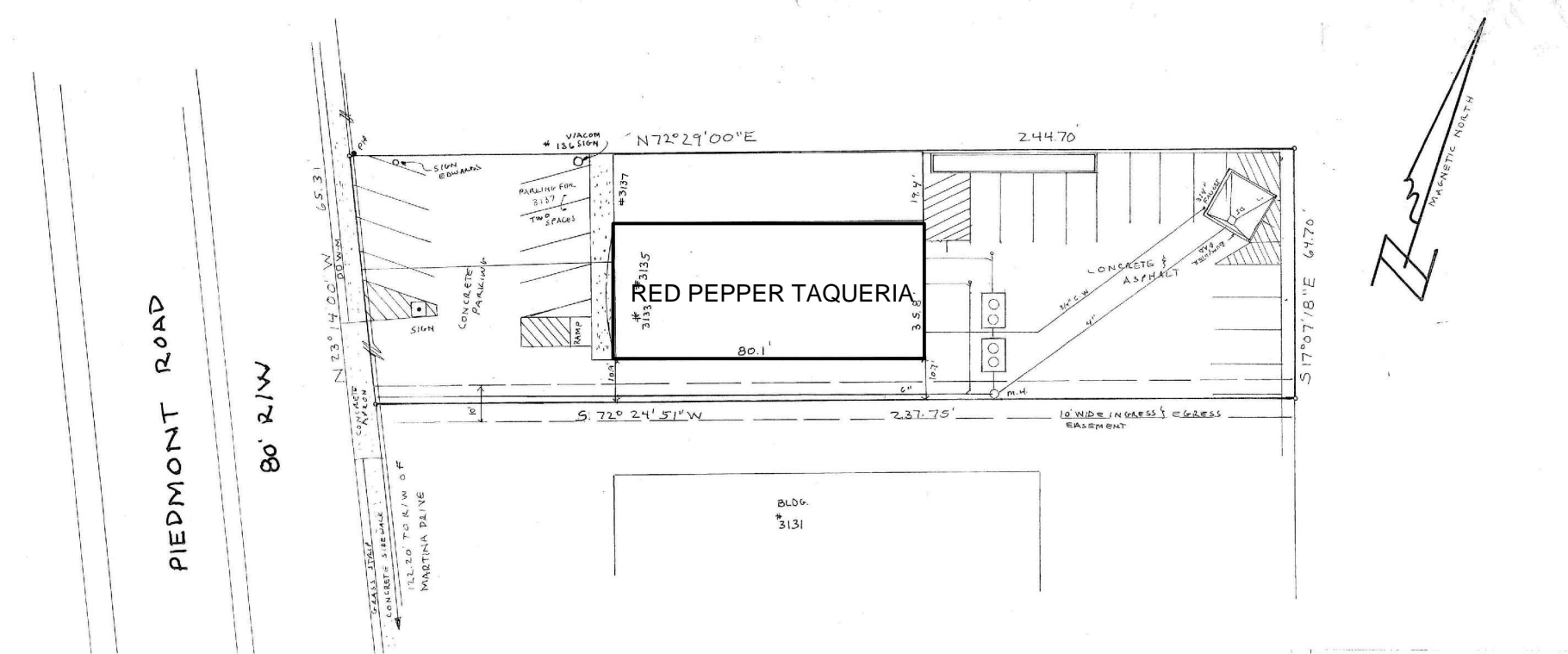


LOCATION MAP

PROJECT INFORMATION

DINING AREA = 1450 S.F. : 15 = 97
 BAR AREA = 202 S.F. : 200 = 1
 KITCHEN AREA = 510 S.F. : 200 = 3
 TOTAL OCUPANTS _____ = 101

- International Building Code, 2006 Edition with Georgia and City of Atlanta Amendments.
- Rules and Regulations of the Safety Fire Commissioner for the State Minimum Fire Safety Standards, Chapter 120-3-3, January 5, 2007 (Georgia Safety Fire Law)
- National Fire Protection Association (NFPA) 101 Life Safety Code, 2000 Edition with Georgia Amendments.
- International Fuel Gas Code, 2006 Edition with Georgia Amendments.
- International Mechanical Code, 2006 Edition with Georgia Amendments.
- Georgia Handicapped Accessibility Law 120-3-20.
- International Plumbing Code, 2006 Edition with Georgia Amendments.
- National Electrical Code (NEC), 2005 Edition with Georgia Amendments.
- International Energy Conservation Code, 2009 Edition with Georgia Amendments.
- International Fire Code, 2006 Edition with Georgia Amendments.



EXISTING SITE PLAN

DRAWING INDEX

[illegible]

04/26/13

FOR —

REVISIONS —

COMMENTS _____
SAP SUBMITTAL
RELEASED FOR CONSTRUCTION

A.000



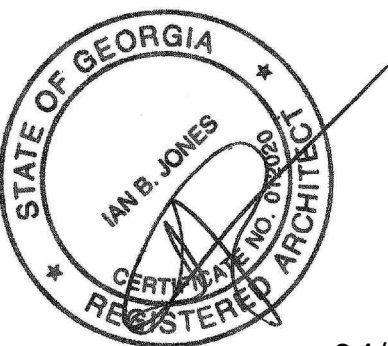
RESTAURANTS CONSULTING GROUP, INC.
6017 SANDY SPRINGS CIR, NW.
SANDY SPRINGS, GA 30328
TEL: 404-252-1237 FAX: 404-252-1257
Restaurantsconsultinggroup.com

COPYRIGHT OWNERSHIP:
This drawing is the property of Restaurants Consulting Group Inc. and may not be used, copied or revised without expressed written permission.

Contractor shall not scale drawings

CONSULTANT _____

SEAL _____



04/26/13

PROJECT _____

RED PEPPER TAQUERIA

3135 PIEDMONT ROAD
ATLANTA, GA 30305

FOR _____

REVISIONS _____

DATE _____

DRAWN BY _____

CHECKED BY _____

SHEET TITLE _____

EXISTING SPACE

& DEMOLITION FLOOR PLAN

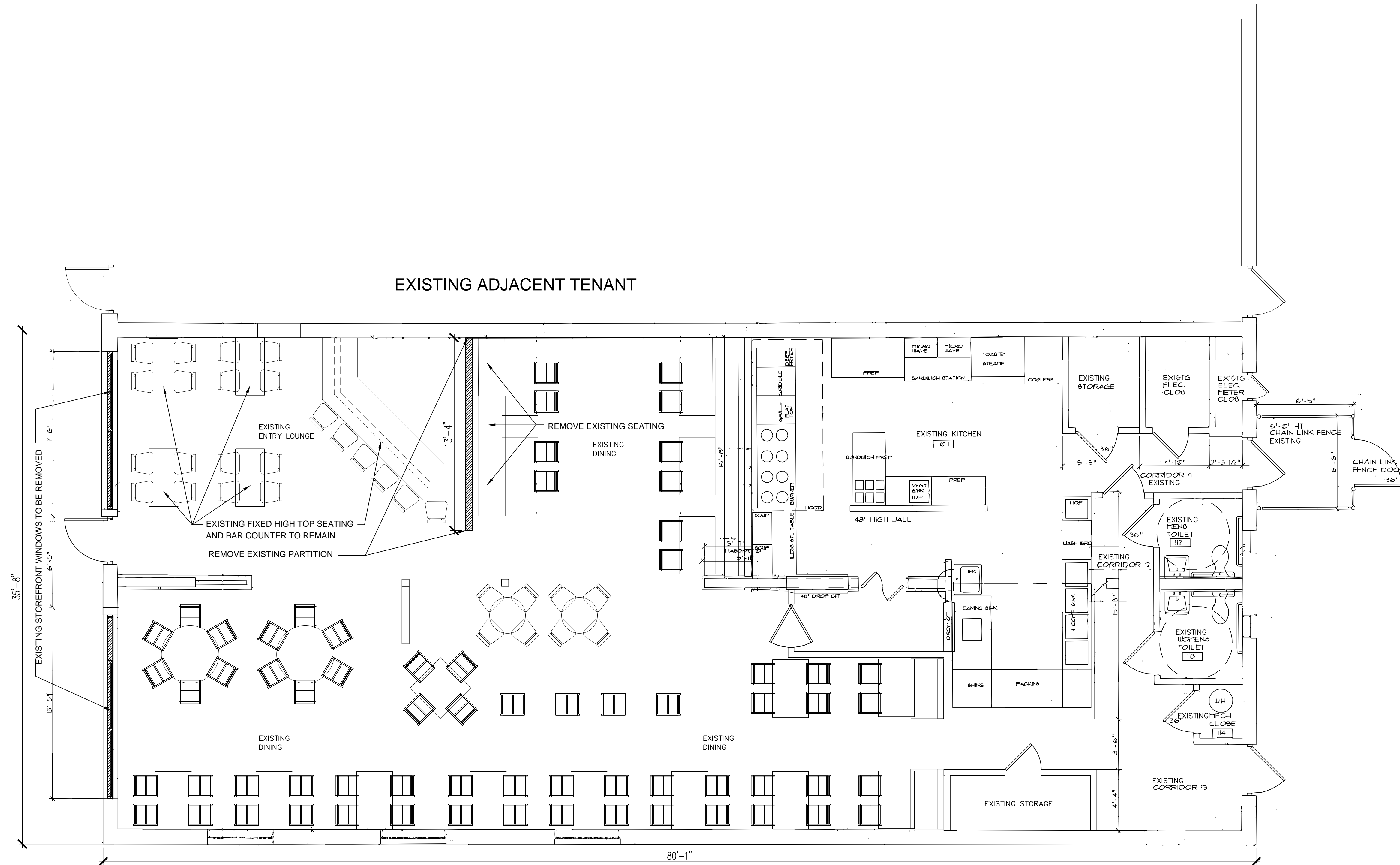
SHEET NUMBER _____

COMMENTS _____

SAP SUBMITTAL

RELEASED FOR CONSTRUCTION

© 2013



1
A.100
EXISTING SPACE & DEMOLITION FLOOR PLAN
SCALE: 1/4" = 1'-0"



04/26/13

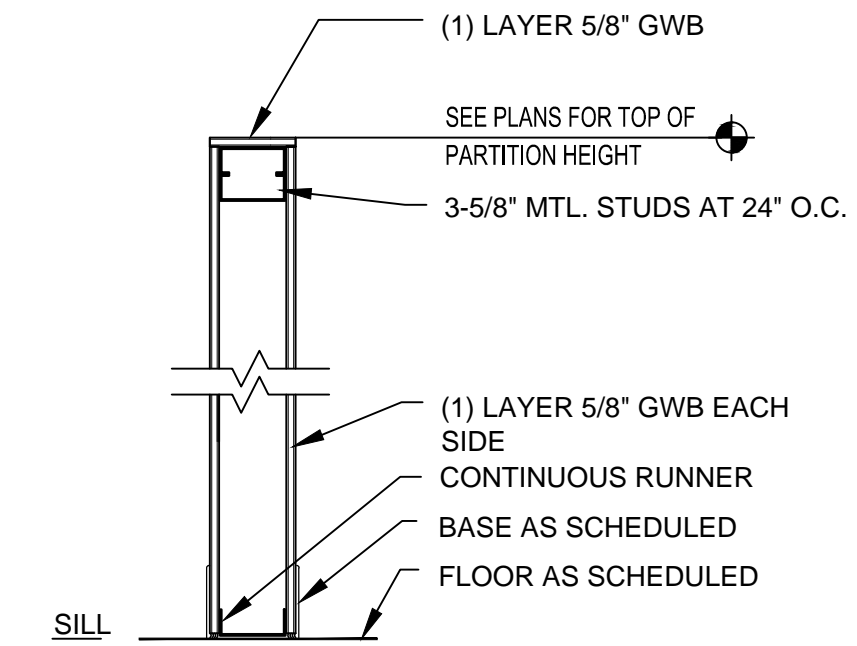
RED PEPPER TAQUERIA

3135 PIEDMONT ROAD
ATLANTA, GA 30305

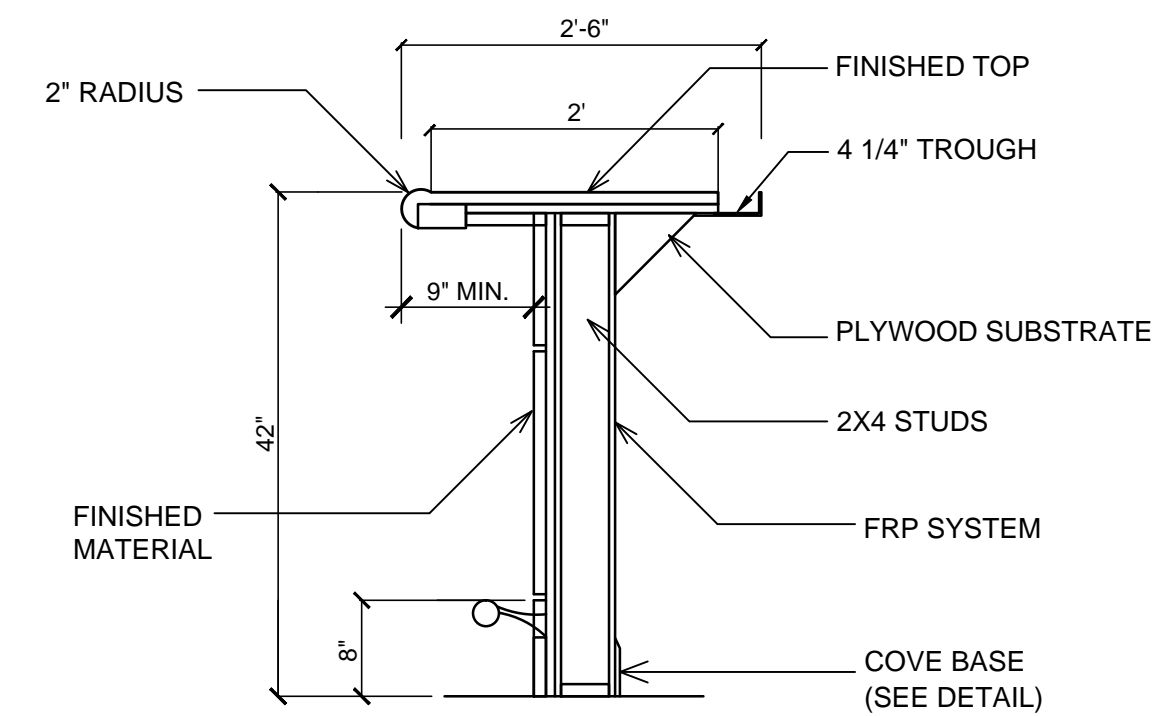
A.101

BAR EQUIPMENT SCHEDULE

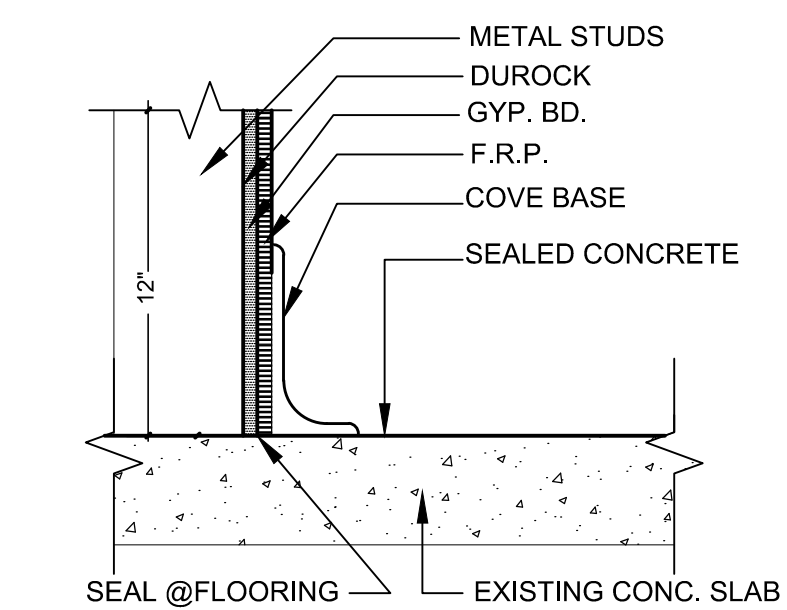
Item No	Qty	Equipment Category	Comments
01	1	Existing Bar Countertop	---
02	1	New Bar Countertop	---
03	1	Hand Sink	---
04	1	S.S. Table 24" x 24"	---
05	2	Cocktail Station 30"	---
06	2	Dump Sink	---
07	3	Drain Board 23"	---
08	1	Glass Washer	---
09	1	Liquor Display 23"	---
10	1	Liquor Display 12"	---
11	1	Bottle Coffer 60"	---
12		Back Bar Counter & Cabinets	---
13			---
14	2	Back Bar Cooler 48"	---
15		Back Bar Shelving	---
16	2	POS	---



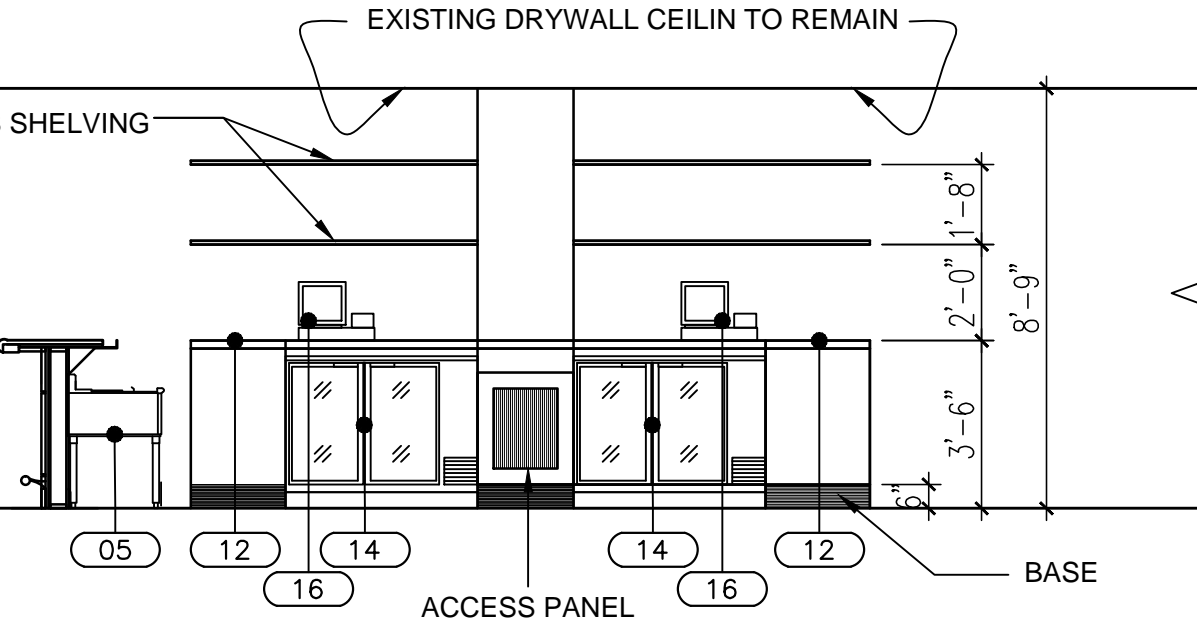
4 LOW PARTITION (TYP.)
A.101 N.T.S. 3 5/8" STUD
4 7/8" Width



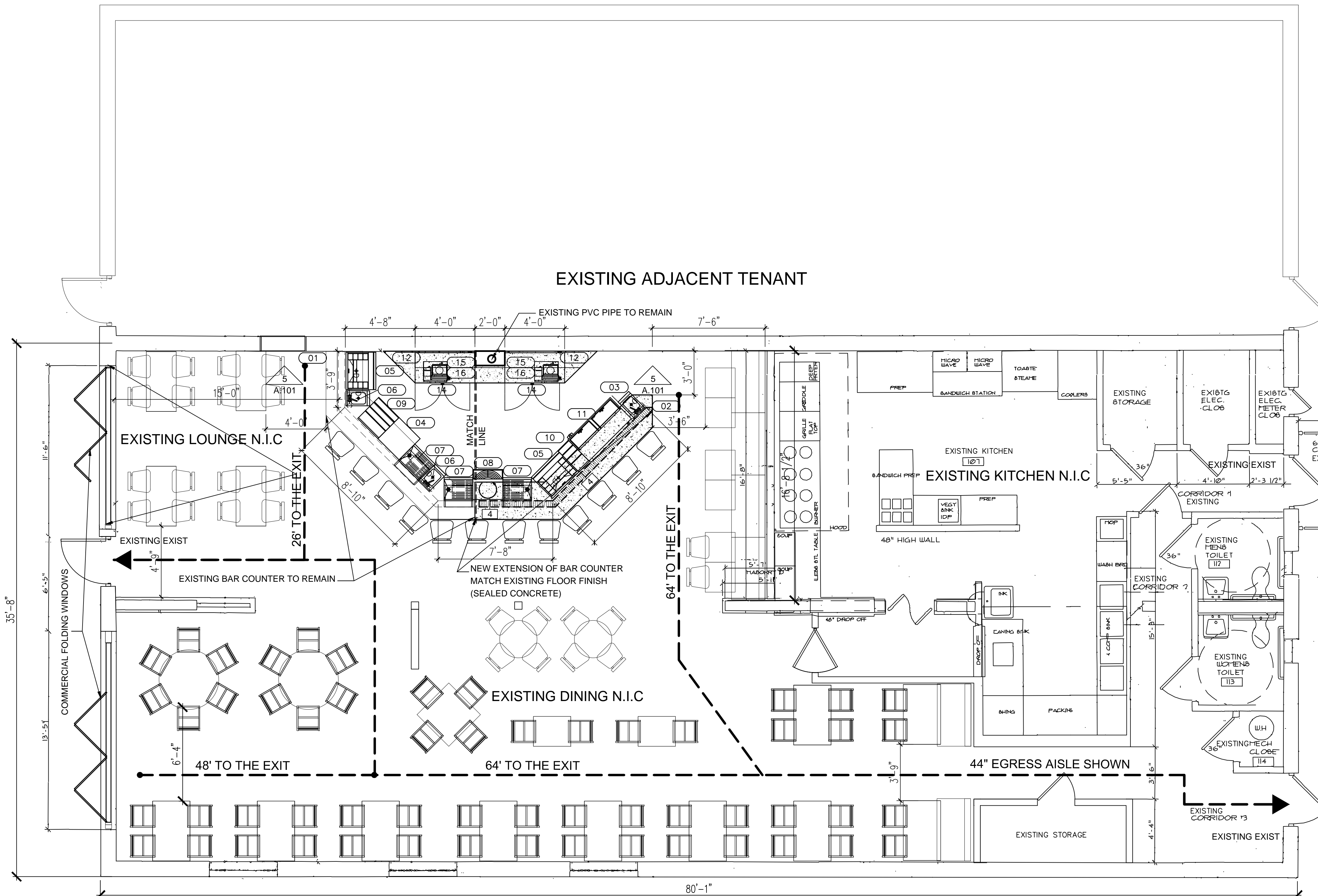
3 BAR SECTION (TYP.)
A.101 N.T.S.



2 COVE BASE DETAIL (TYP.)
A.101 N.T.S.



5 BACK BAR ELEVATION
A.101 SCALE: 1/4" = 1'-0"



1 NEW BAR EXTENSION & LIFE SAFETY FLOOR PLAN
A.101 SCALE: 1/4" = 1'-0"

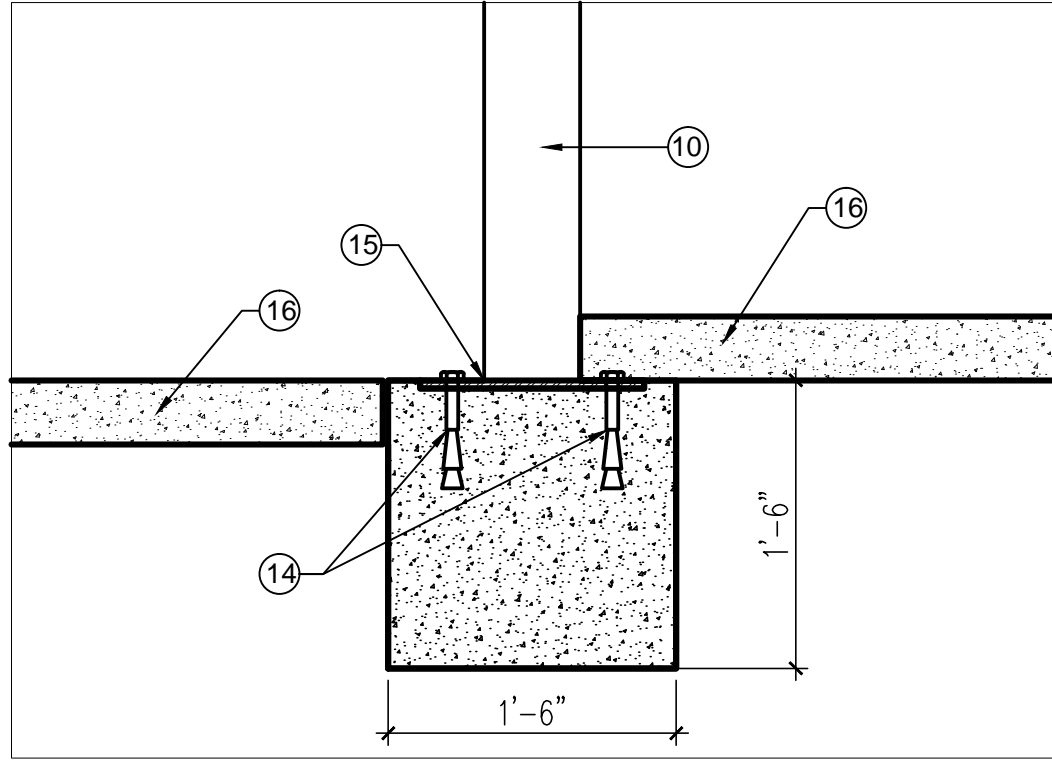
EGRESS CALCULATION

EGRESS WIDTH	REQUIRED	TOTAL OCCUPANTS	$\frac{101}{108} \times 2.2 = 20.2'$
CALCULATIONS	PROVIDED	108' PROVIDED	> 20.2' REQUIRED

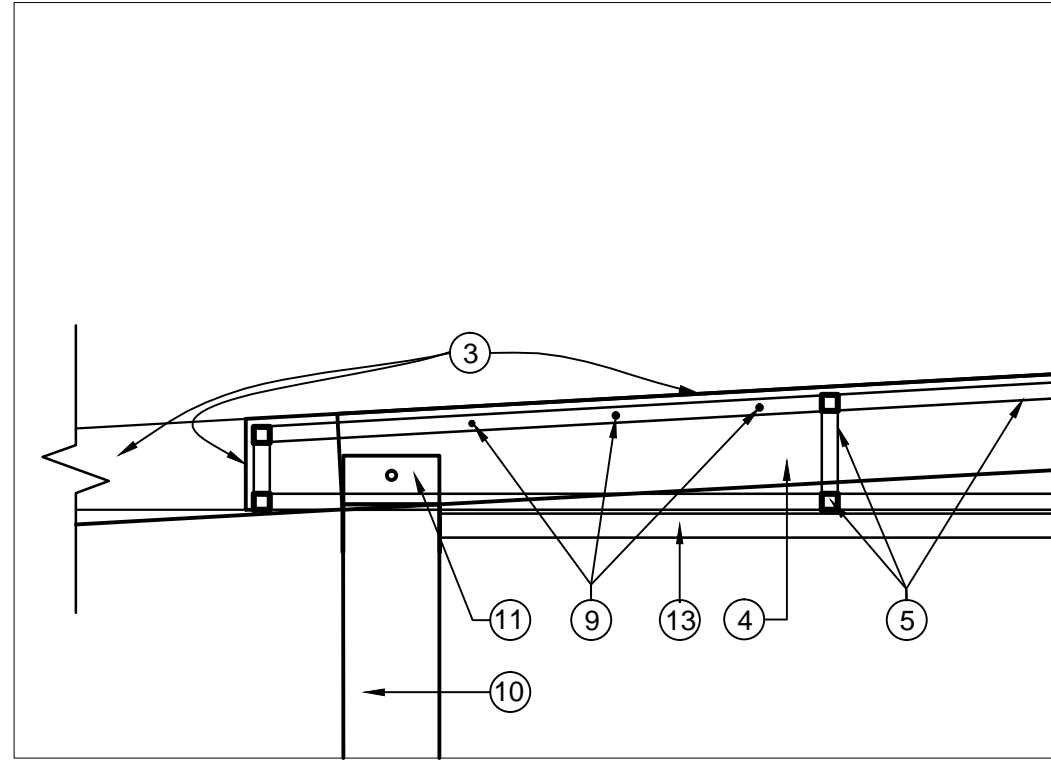
EXIT ACCESS TRAVEL DISTANCE
ALLOWED + 150'
REQUIRED EXITS: 1 PROVIDED EXITS: 3
COMMON PATH OF EGRESS TRAVEL: 20'

HEALTH DEPARTMENT REQUIREMENTS:

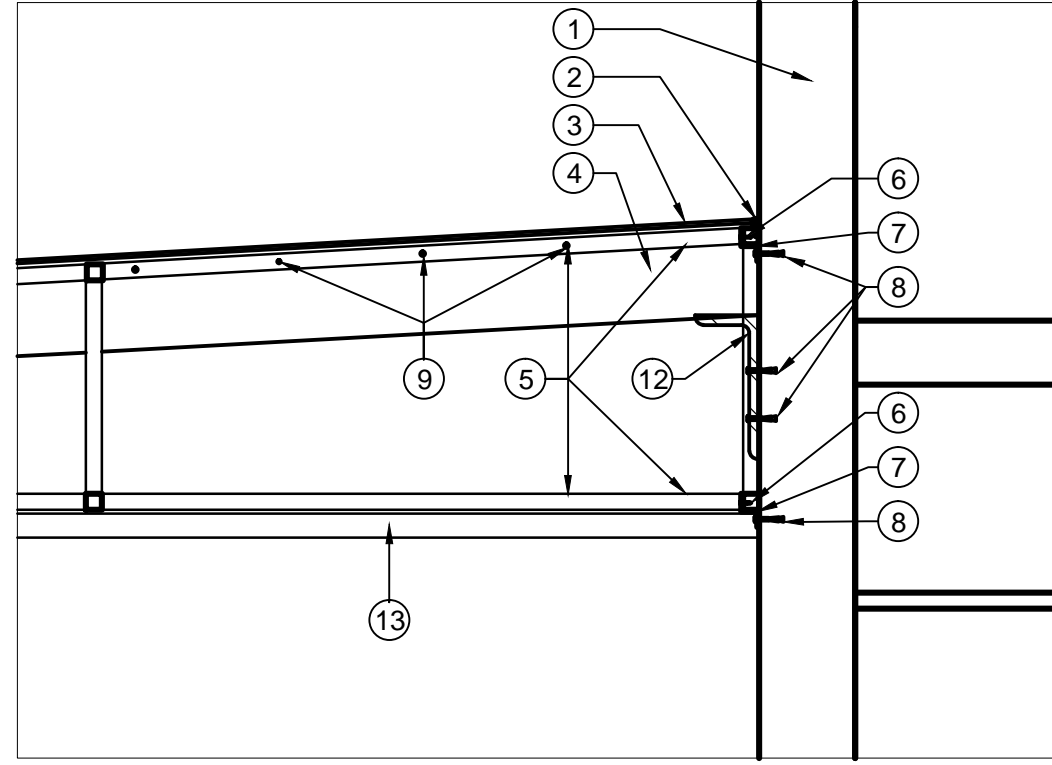
1. BAR MUST HAVE COVE BASEBOARDS.
2. BAR EQUIPMENT WITH PLUMBING CONNECTION MUST ALL HAVE INDIRECT SEWER CONNECTIONS.
3. BAR AREA, CEILING MUST BE LIGHT IN COLOR, SMOOTH TO TOUCH, NON ABSORBENT, NON POROUS.
4. BAR AREA LIGHTING FIXTURES MUST BE SHIELDED.
5. ALL BAR EQUIPMENT WITH PLUMBING AND POWER CONNECTION MUST HAVE AIR GAP.



4
A.200
AWNING DETAIL
SCALE: 1" = 1'-0"



5
A.200
AWNING DETAIL
SCALE: 1" = 1'-0"



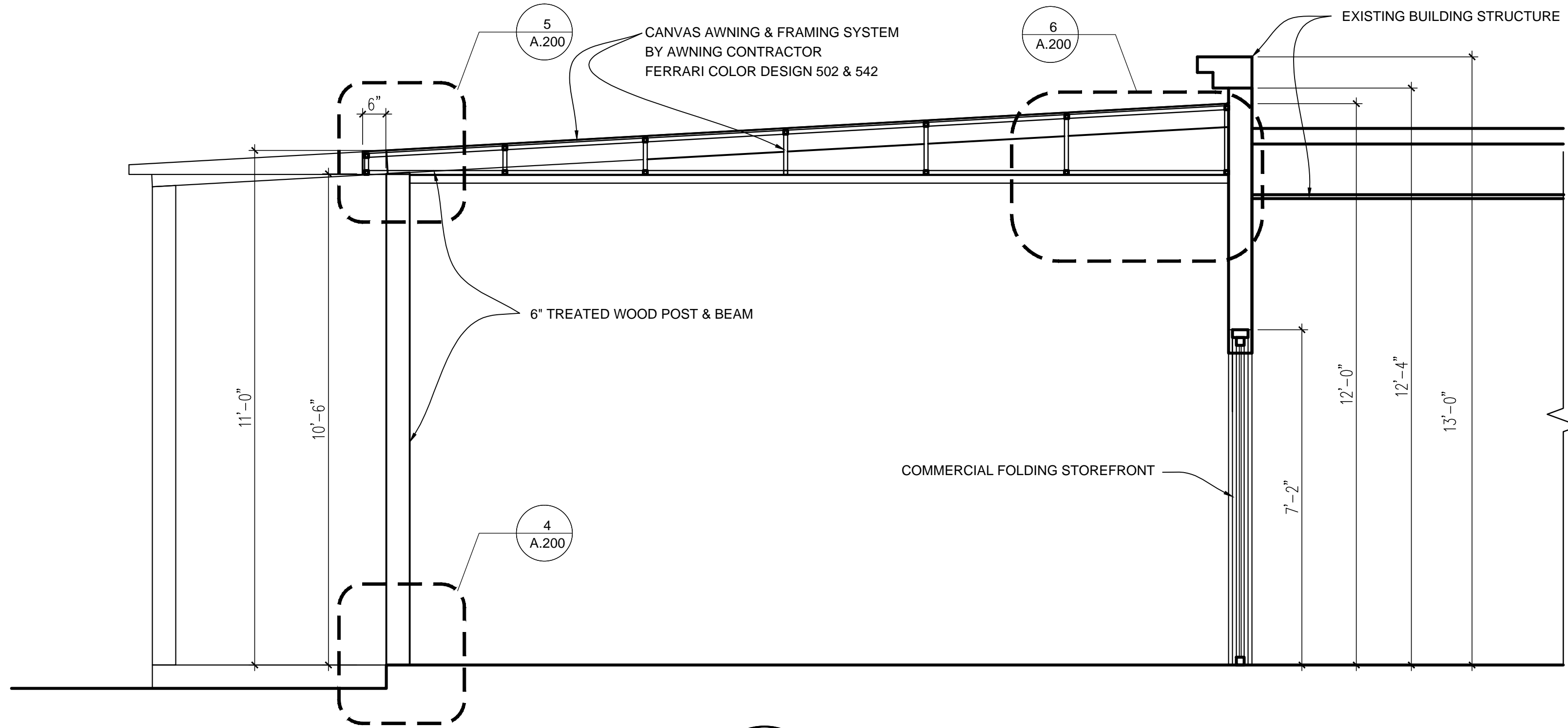
6
A.200
AWNING DETAIL
SCALE: 1" = 1'-0"

LEGEND:

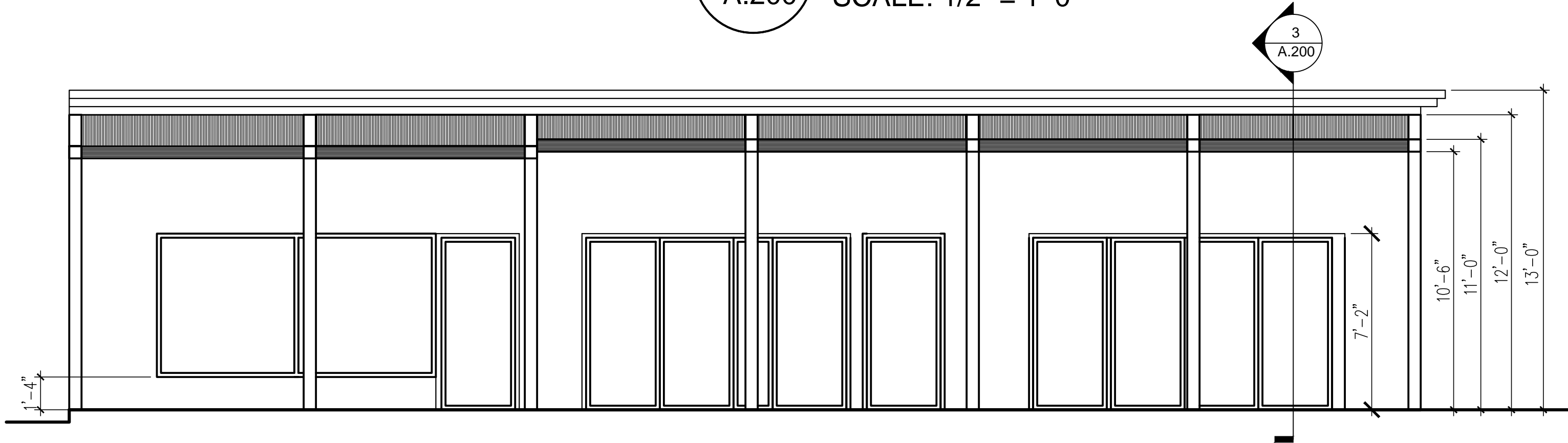
- ① EXISTING BUILDING EXTERIOR WALL
② AWNING RAIL (FOR FABRIC ATTACHMENT)
③ AWNING FABRIC
④ 6" STEEL BEAM
⑤ 1" SQUARE ALUM. TUBING (AWNING FRAME)
⑥ # 14 HEX HEAD TEK SCREW
⑦ 14 GAUGE STEEL MOUNTING BRACKET
⑧ CONCRETE EXPENSION ANCHOR 24" O.C.
⑨ 1/4" x 3" LAG SCREW
⑩ 6" STEEL POST
⑪ POST CAP & BASE
⑫ STEEL BEAM SUPPORT STEEL ANGLE CONTINUES
⑬ 1 1/2" x 1 1/2" ANGLE BRACING
⑭ 3/4" EXPENSION BOLT
⑮ 1/2" x 14" STEEL PLATE
⑯ EXISTING CONCRETE SLAB

Ferrari Color Design 502 & 542

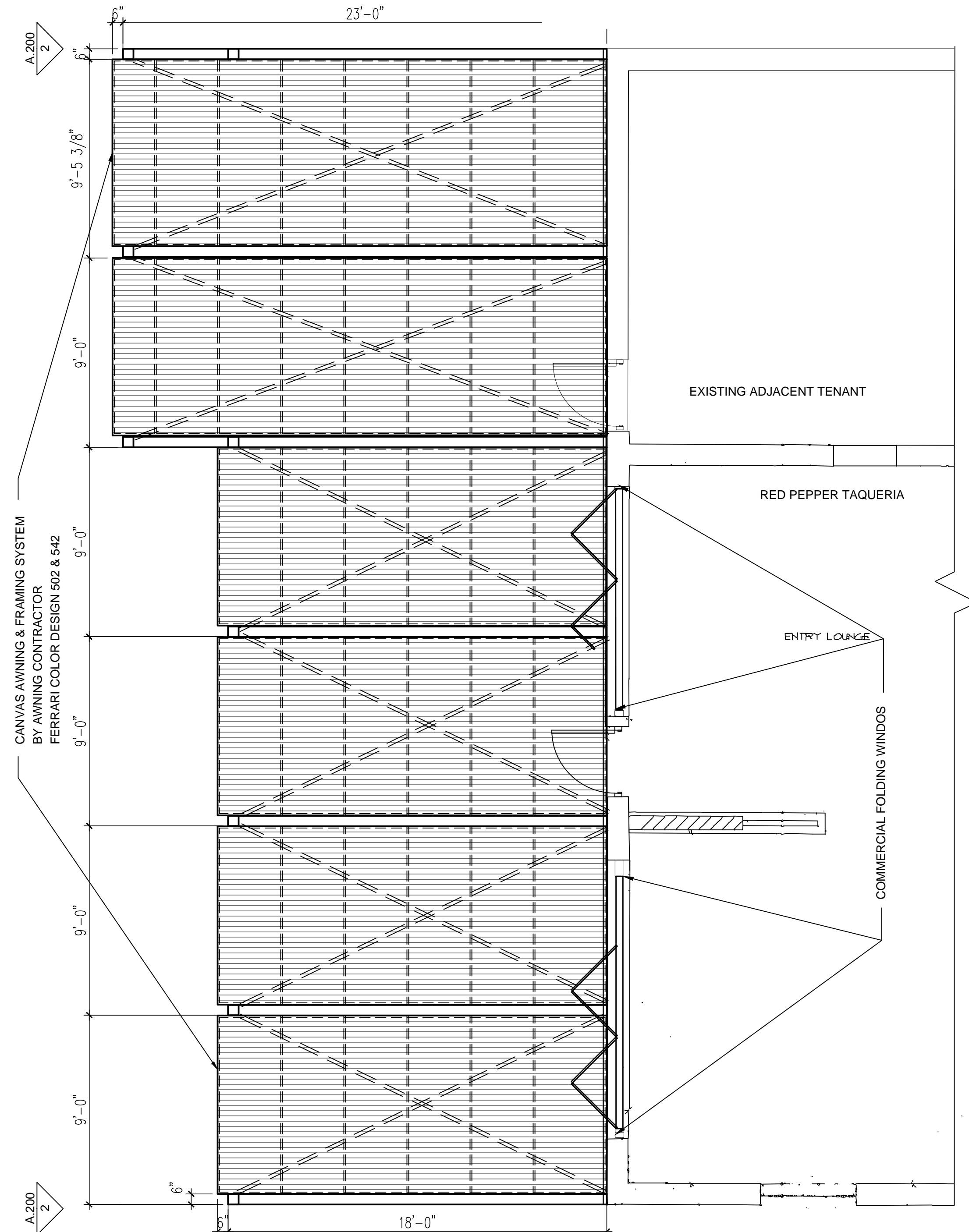
Catalog Page No.	32-33
Trademark	Ferrari
Base Fabric	High-Tenacity Polyester
Finished Width In.	70.8
Finished Square Yd. Wt. Oz.	17
Finish/Coating	502: Biface Vinyl 542: PVC Coated with Clear Varnish
Tongue Tear Strength Lbs.	502: 48 lbs. 542: 48 x 40
Grab Tensile Lb.	502: 433 lbs. 542: 433 x 420
Hydrostat	—
Shrinkage Factor	—
Approx. No. Colors - Top	502: 30 Solids 542: 11 Stripes
Color - Underside	502: Same 542: Same as One of Stripes
Water Repellent	Yes
Mildew Resistant	Yes
FR Standards Met	502: CSFM, NFPA-701 542: CSFM
Government Spec. Met	None
Heat Sealable	502: Yes, Recommend RF Weldable 542: Yes
Opaque	502: Depends on Color 542: Yes
Translucent	502: Depends on Color 542: No
Put Up Yd.	55
Primary End Use	Awning, Tents
Other End Use	Retractable Awnings
Warranty	8 Year



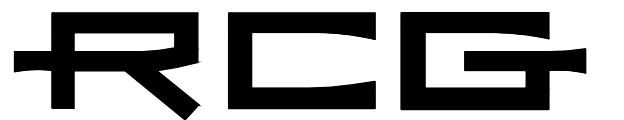
3
A.200
AWNING SECTION
SCALE: 1/2" = 1'-0"



2
A.200
AWNING ELEVATION
SCALE: 1/4" = 1'-0"



1
A.200
AWNING PLAN
SCALE: 1/4" = 1'-0"



RESTAURANTS CONSULTING GROUP, INC.
6017 SANDY SPRINGS CIR, NW.
SANDY SPRINGS, GA 30328
TEL: 404-252-1237 FAX: 404-252-1257
Restaurantsconsultinggroup.com

COPYRIGHT OWNERSHIP:
This drawing is the property of Restaurants Consulting Group Inc. and may not be used, copied or revised without expressed written permission.

Contractor shall not scale drawings

CONSULTANT _____

SEAL _____



04/26/13

PROJECT
RED PEPPER TAQUERIA
3135 PIEDMONT ROAD
ATLANTA, GA 30305

FOR _____

REVISIONS _____

DATE 04/26/13

DRAWN BY YH

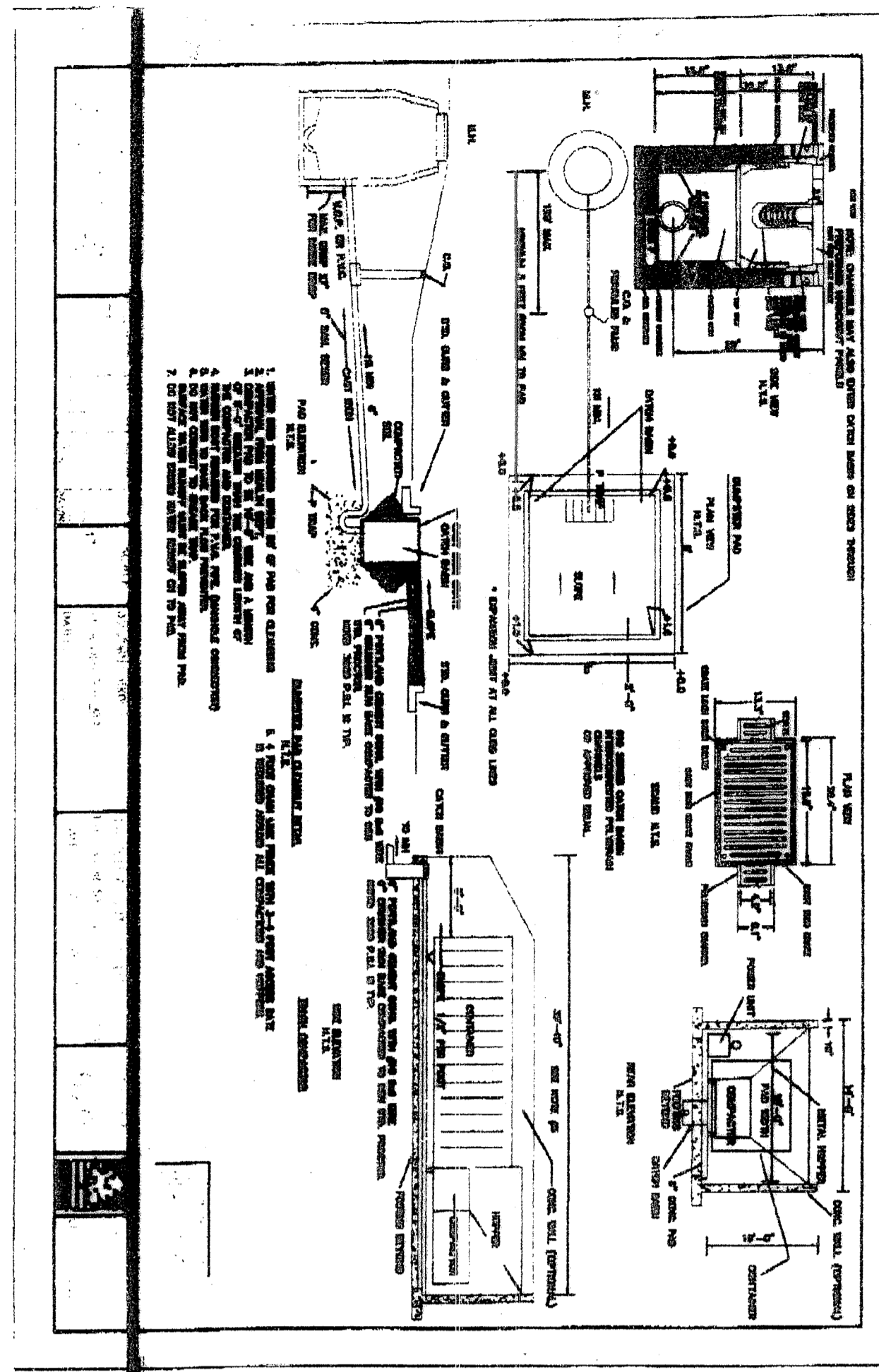
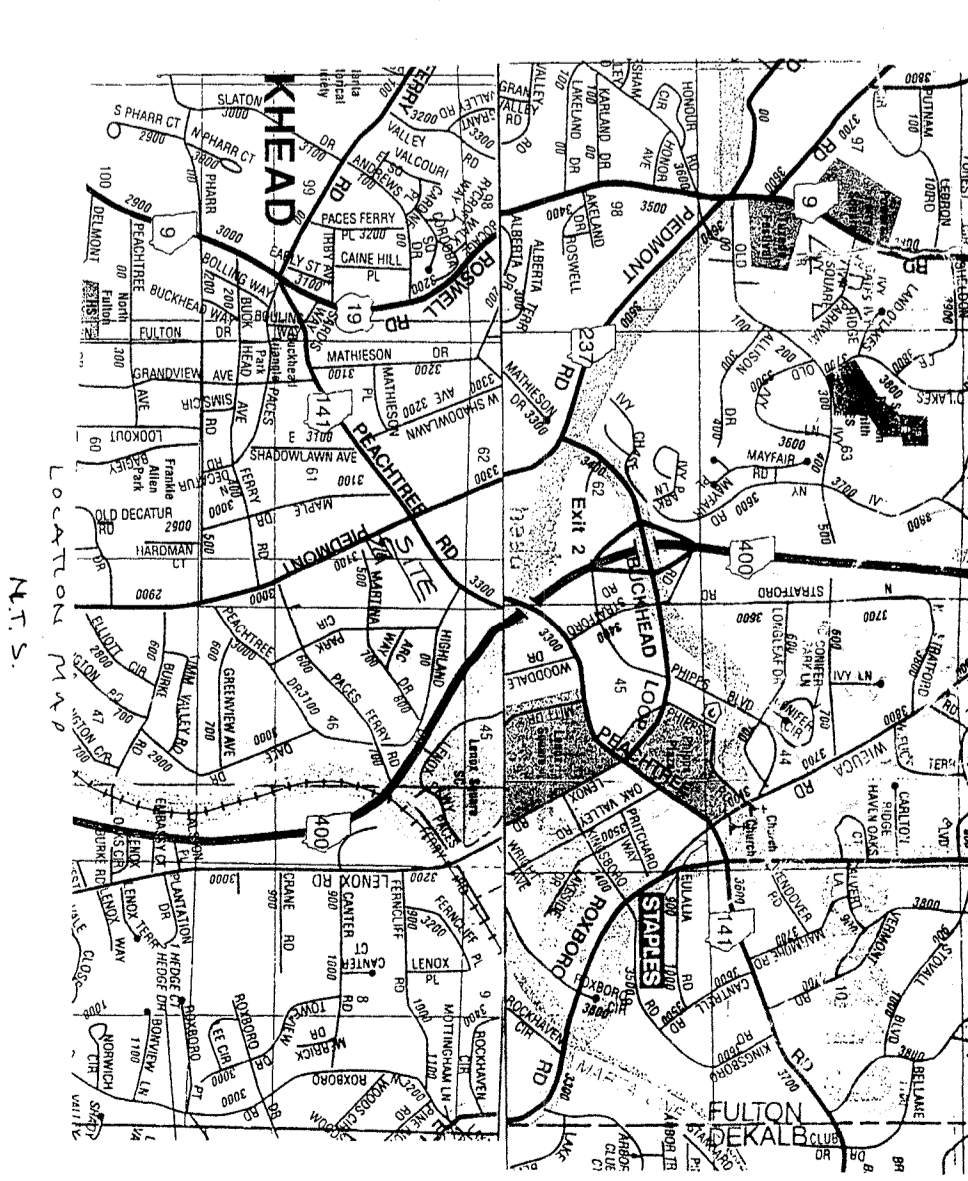
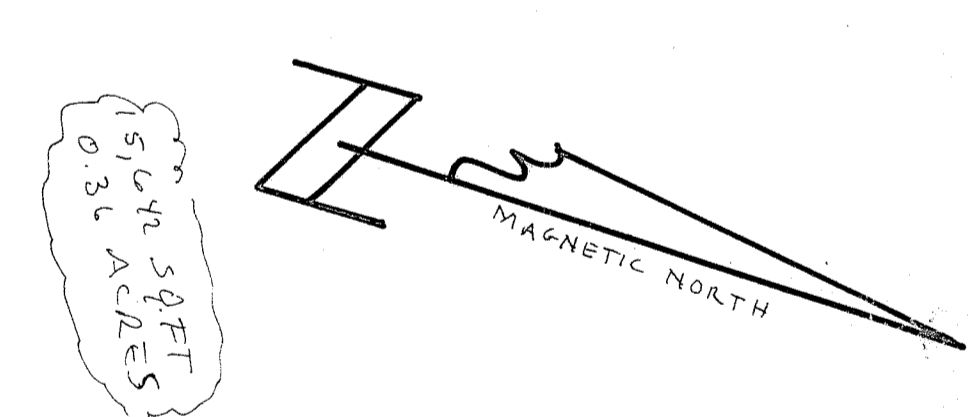
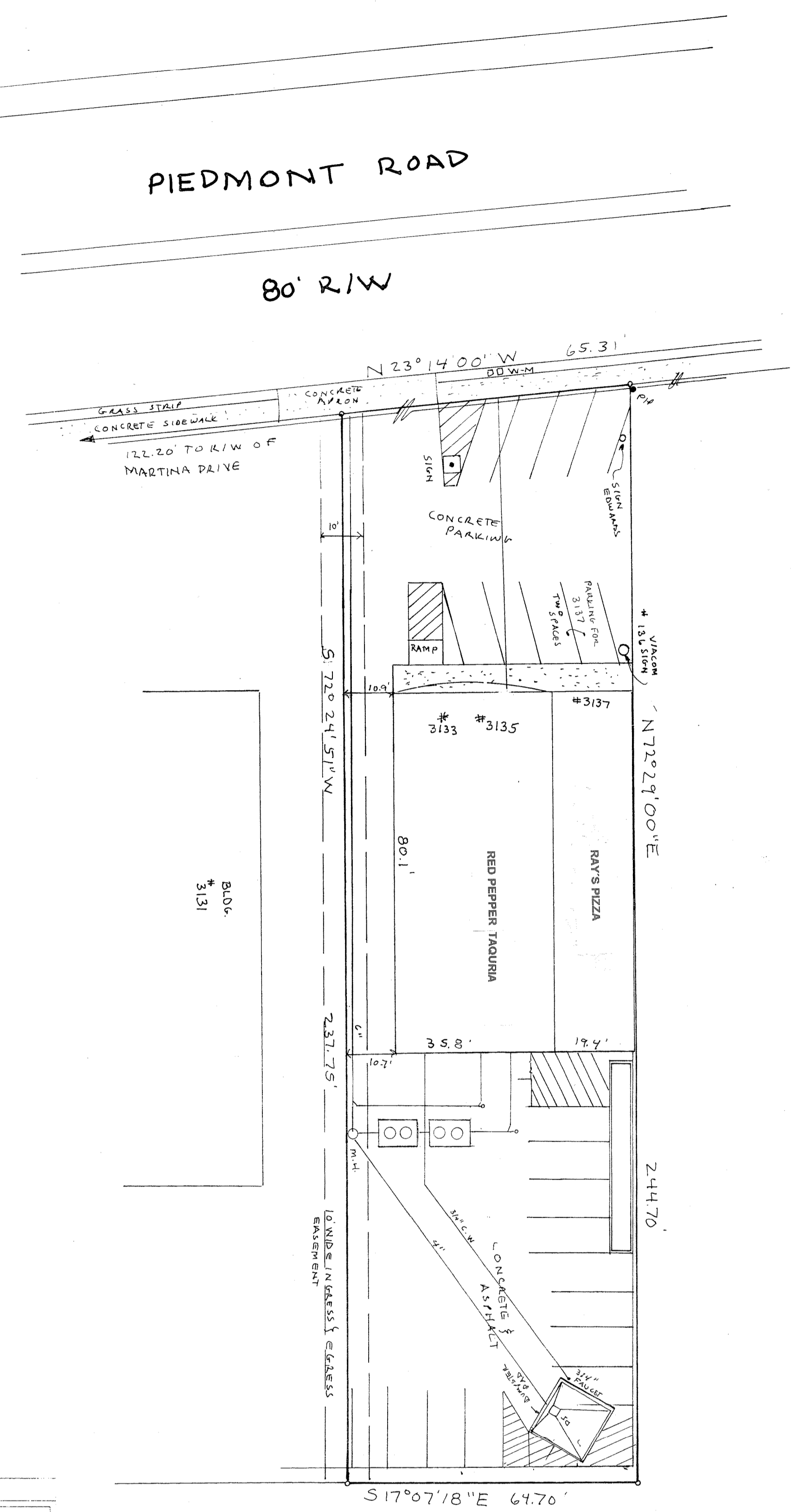
CHECKED BY IBJ

SHEET TITLE
AWNING PLAN & DETAILS

SHEET NUMBER _____

A.200

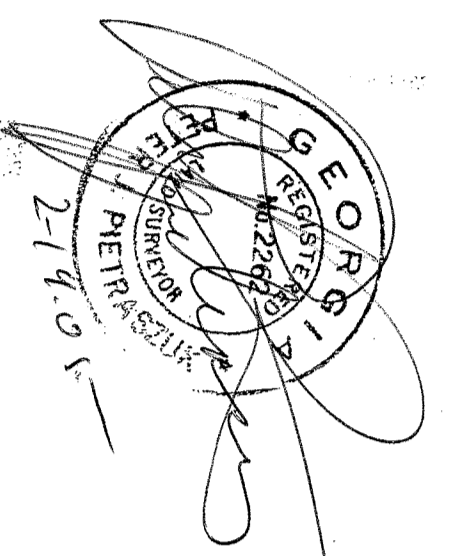
COMMENTS
SAP SUBMITTAL
RELEASED FOR CONSTRUCTION
© 2013



THIS PLAN HAS BEEN CALCULATED FOR CLOSURE AND IS FOUND TO BE ACCURATE WITHIN ONE FOOT IN 445.721 FEET

IN MY OPINION, THIS PLAN IS A CORRECT REPRESENTATION OF THE LAND PLATTED AND HAS BEEN PREPARED IN ACCORDANCE WITH THE REQUIREMENTS OF LAW.

PETER J. PIETRASZUK R.L.S.



APPROVED

Patton County Department of Health and Wellness

SOLID WASTE DEPARTMENT

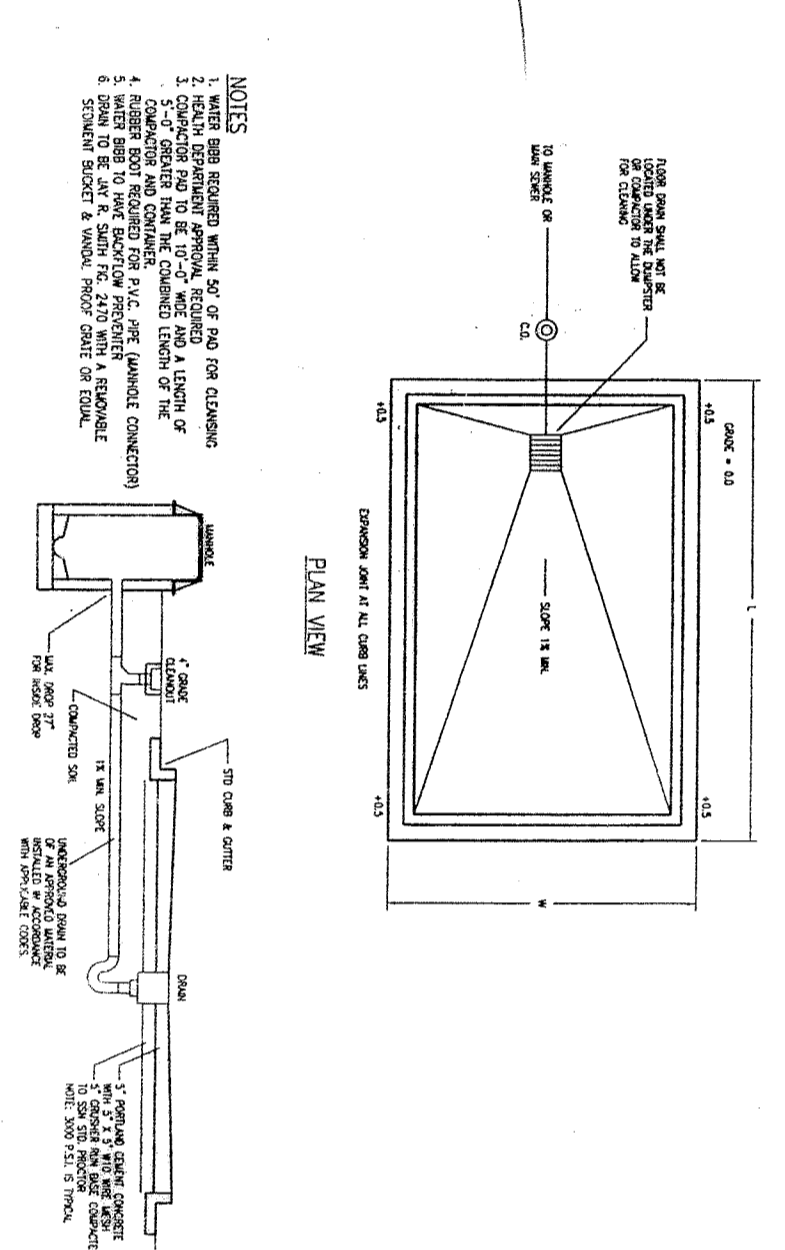
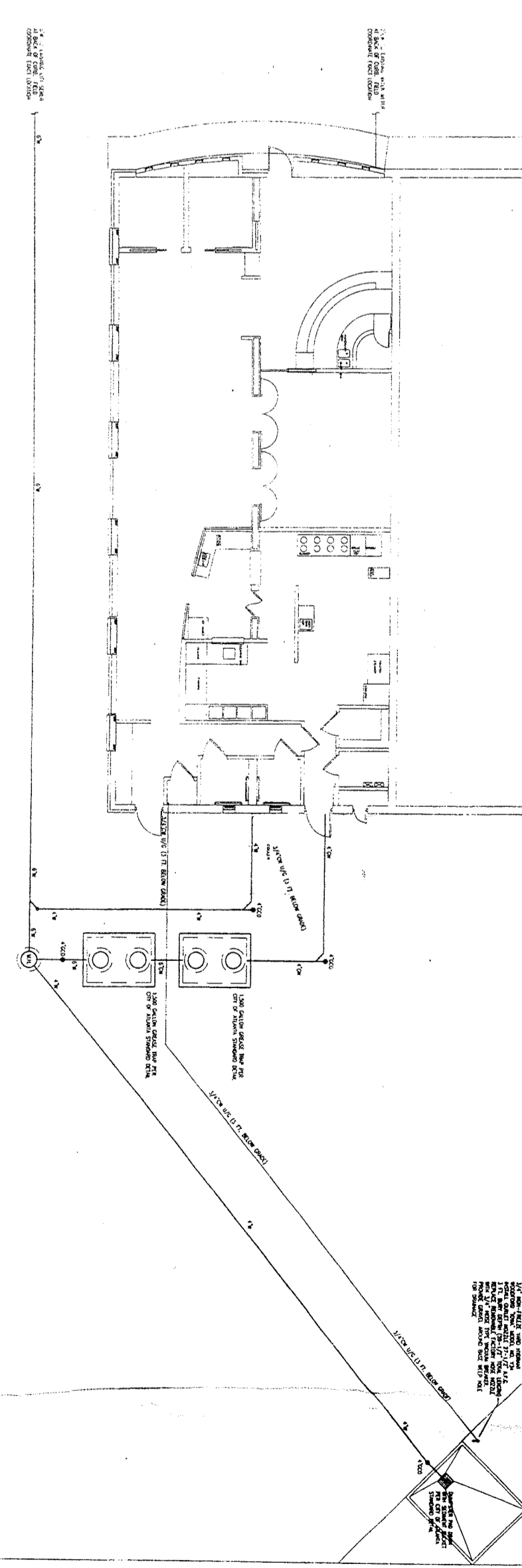
3/20/05

A permit holder, whether approved by a license to practice with the state or not, is not to be considered an authority to issue permits or to issue any other order or to exercise any other power or authority of the state or of any other agency or entity.

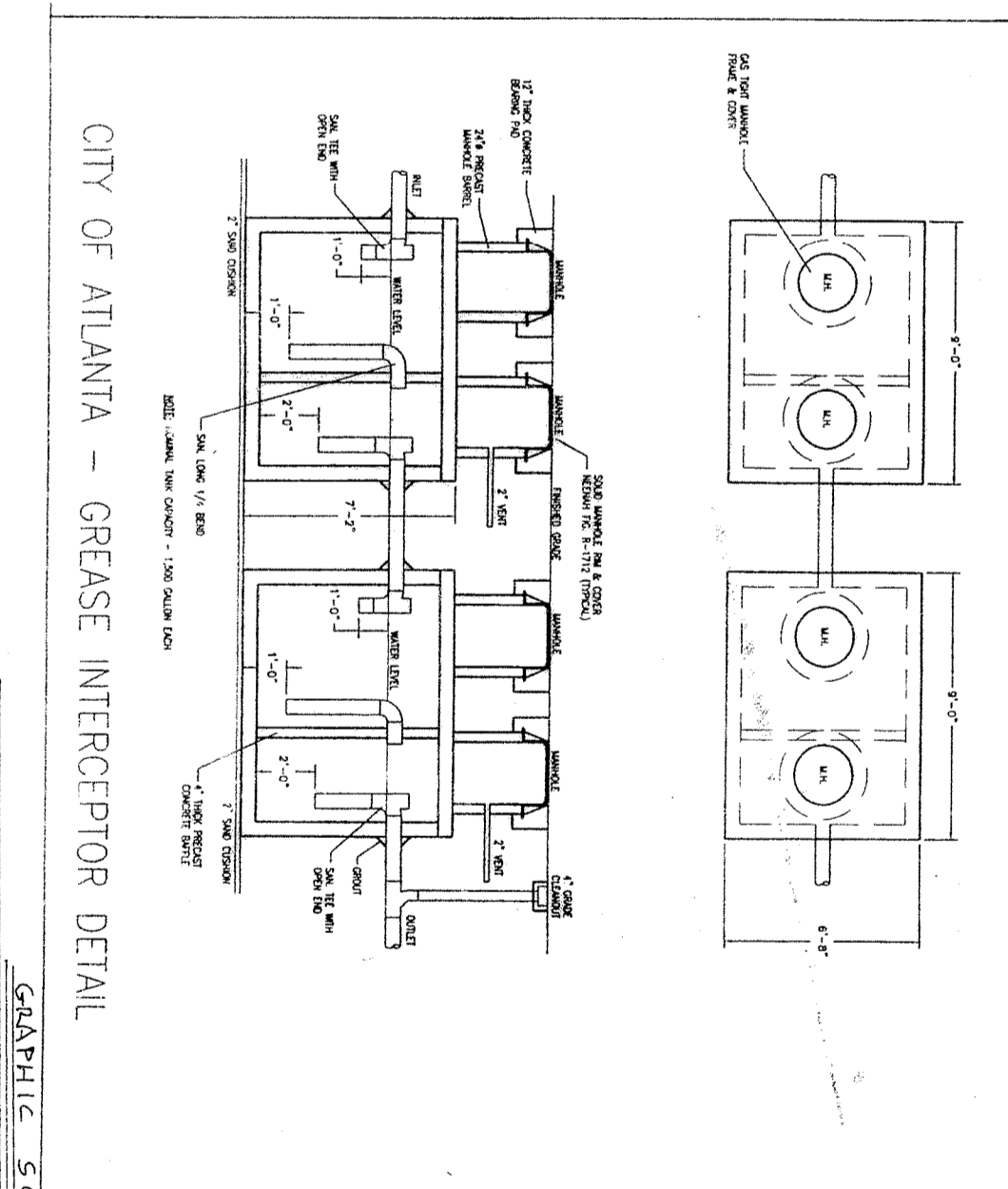
GREASE SHALL BE STORED IN A SEALED CONTAINER APPROVED BY THE POLICEMAN OF HEALTH AND WELLNESS

BY TEBARCO MECHANICAL CORP.

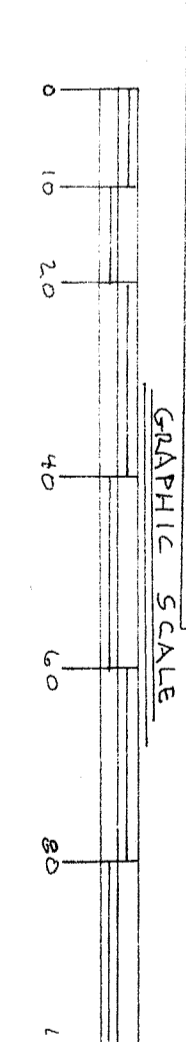
This dumpster/receiver pad construction and all other waste disposal must comply with the Fulton County Code of Ordinances Chapter 22, Article X, Solid Waste.



CITY OF ATLANTA - DUMPSTER PAD DETAIL



CITY OF ATLANTA - GREASE INTERCEPTOR DETAIL



- NOTES:
- 1) INFORMATION TAKEN FROM PLAN BY SHIRLEY NELSON & ASSOCIATES DATED: JULY 28, 1975.
 - 2) 10' TYP. WIDE INGRESS & EGRESS BASEMENT TO BE USED BY TENANTS OF 3131, 3133, 3135 & 3137 BUILDING & THEIR GUESTS ONLY.
 - 3) PARKING SPACES 16 FOR 3133 & 3135, TWO SPACES FOR EDWARDS TOBACCO & CIGAR SHOP.
 - 4) PARKING SPACES EXISTING.

SITE PLAN FOR CAFE DUPRI

LAND LOT 61 17TH DISTRICT

CITY OF ATLANTA

FULTON COUNTY GEORGIA

SITE PLAN BY:

PETER J. PIETRASZUK R.L.S.

4550 STELLA DRIVE

ATLANTA, GA 30317

404-843-2097

JUN 05 08

F-171805

0-2-01-05

REVISION 2-19-05