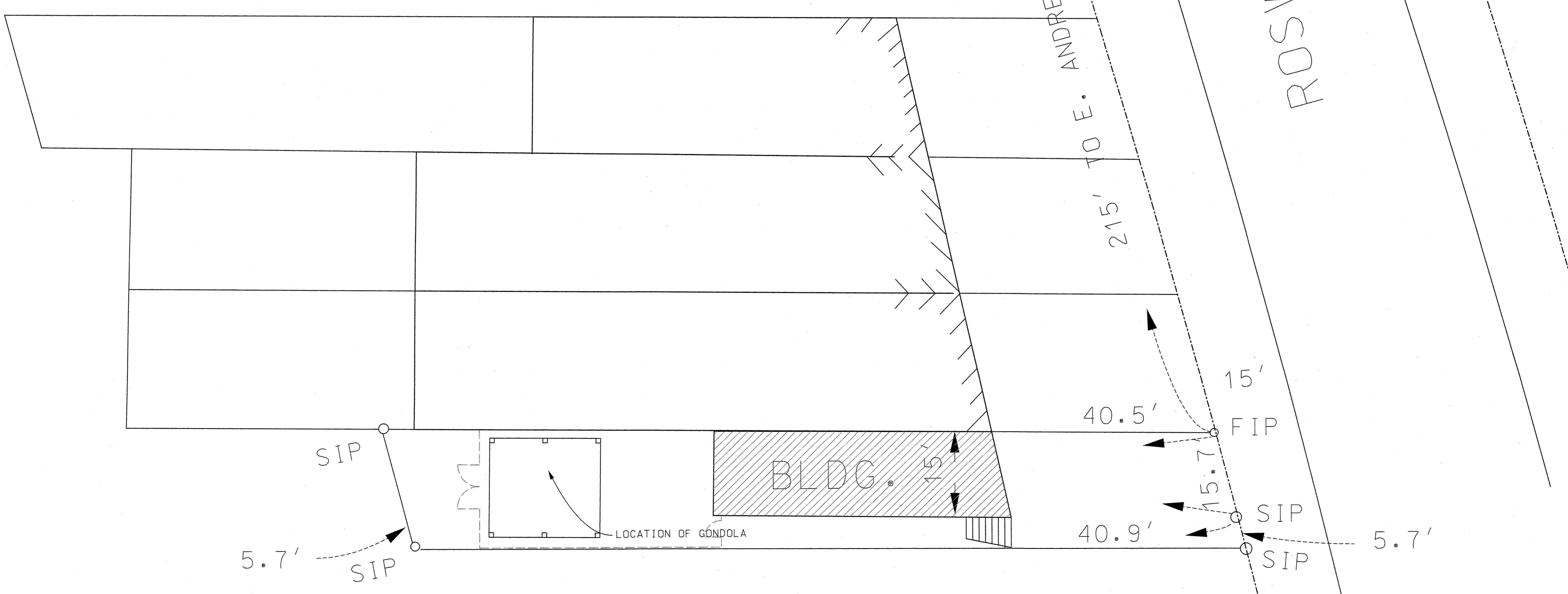


SITE PLAN  
SCALE: 1" = 30'-0"



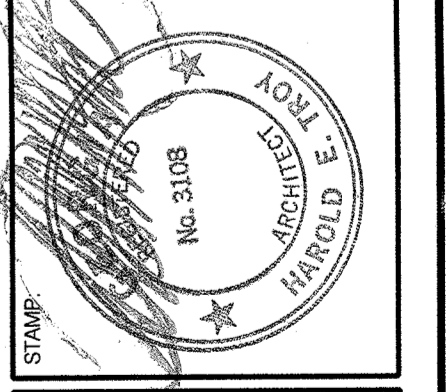
ENLARGED SITE PLAN  
SCALE: 1" = 10'-0"

**herring troy associates, pc**  
 3565 Piedmont Road, NE | 3 Piedmont Center, Suite 205 | Atlanta, GA 30305 | 404 233 3535 | Fax 404 261 6788

REVISIONS NO.	DATE	COMMENTS

DRAWING TITLE: Gondola for 3226  
 3226 Roswell Road NW  
 Atlanta, GA 30305

PROJECT: Sara Weinberger  
 Contract Documents



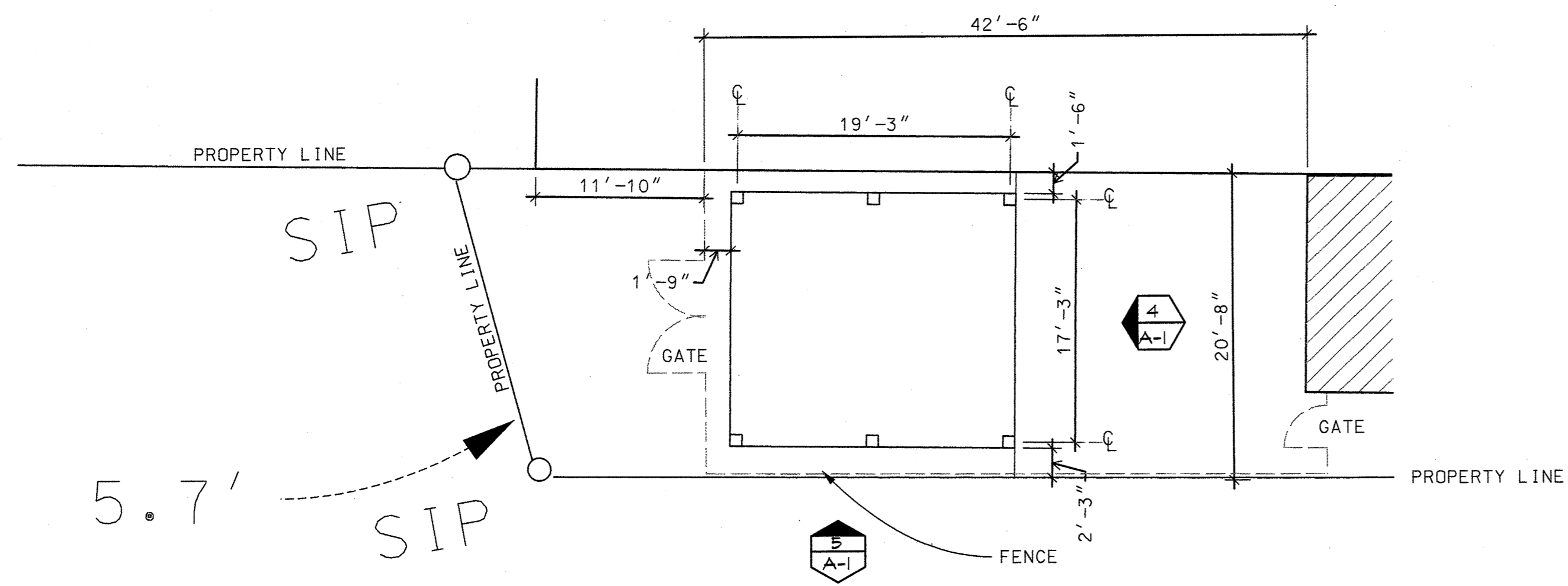
SCALE AS NOTED  
 DRAWN BY TLF /HET  
 24 SEPT 2012

Review & Approval for Construction  
 Not Released for Construction  
 Released for Construction

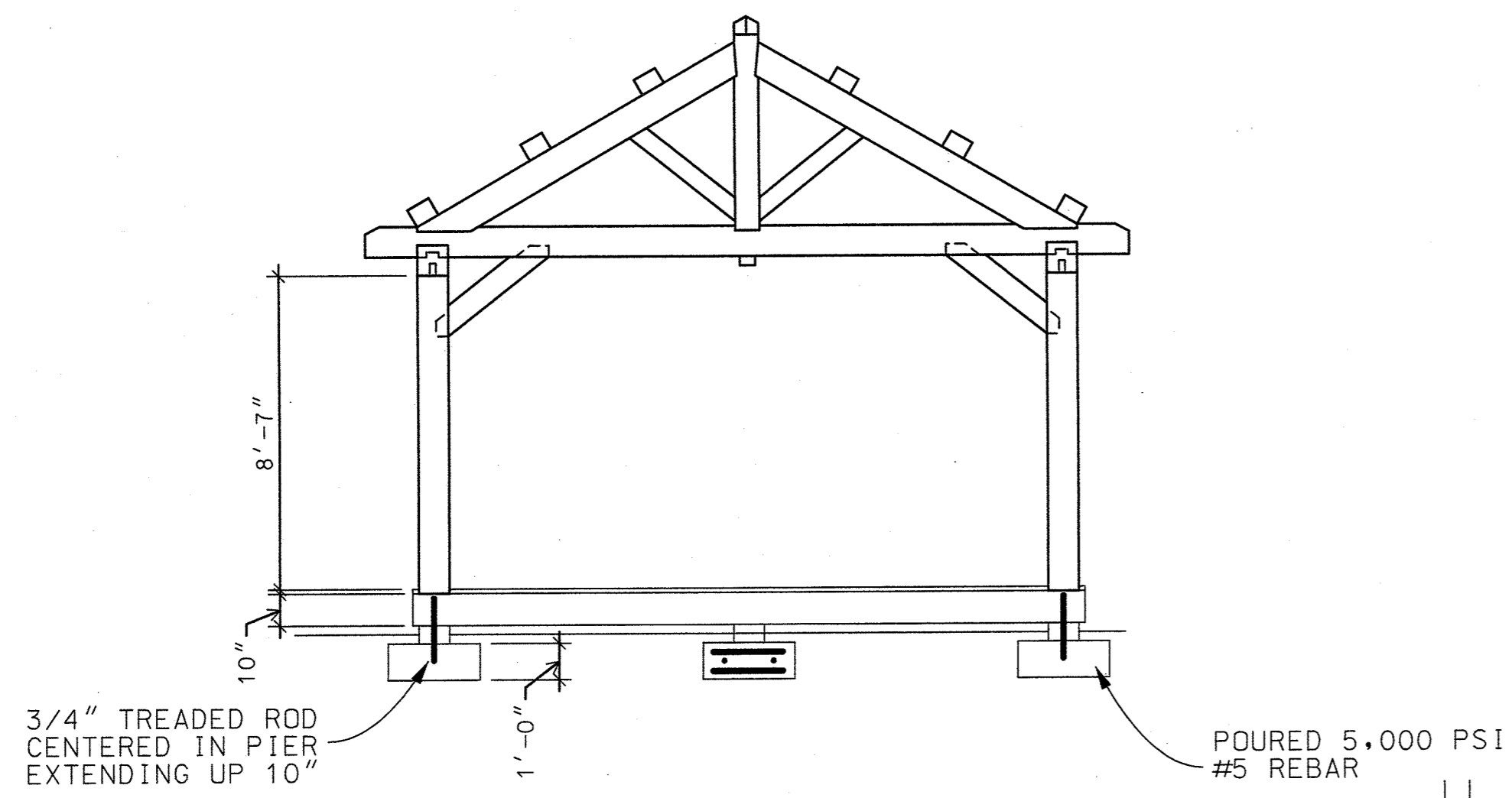
**SITE PLAN**



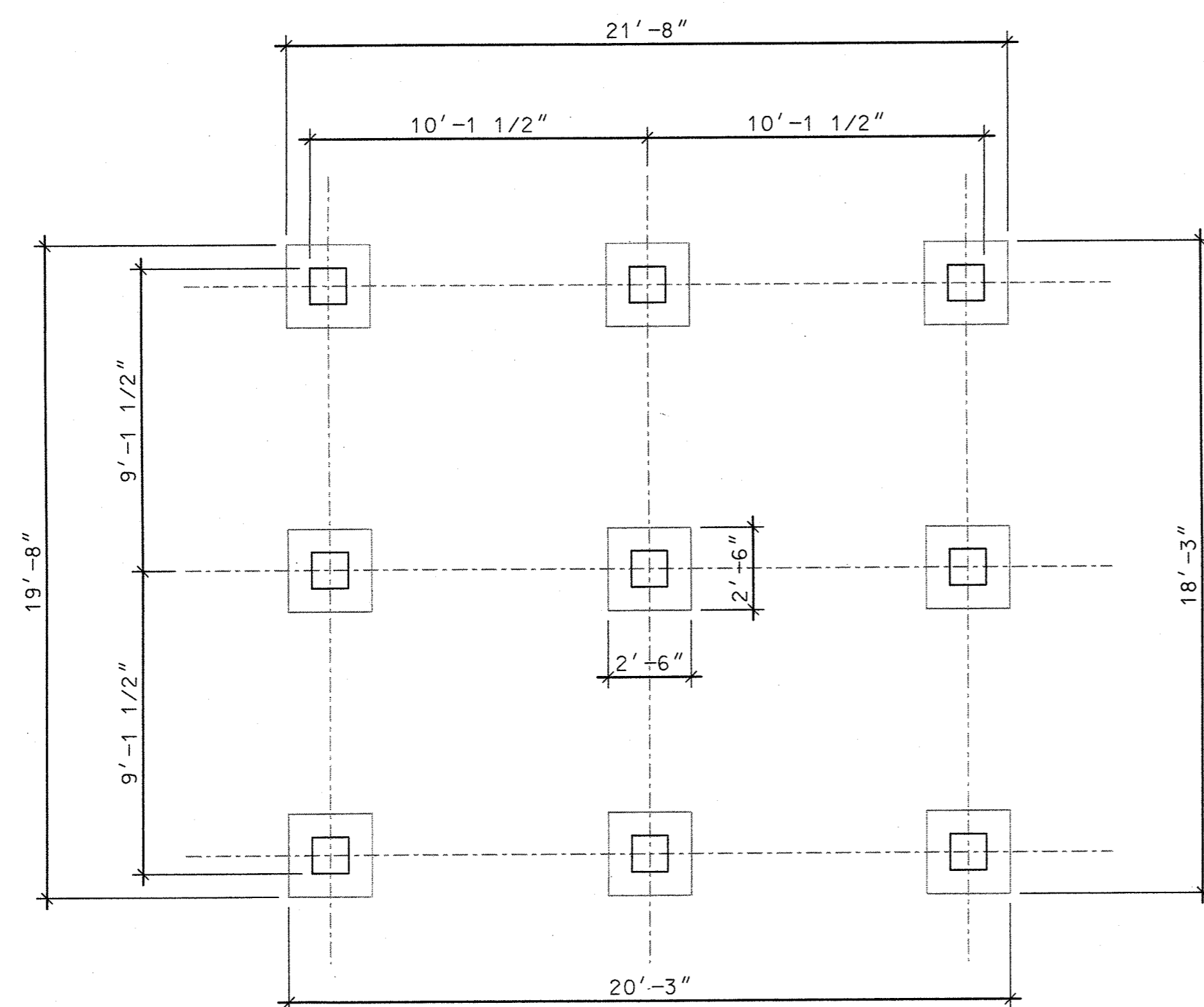




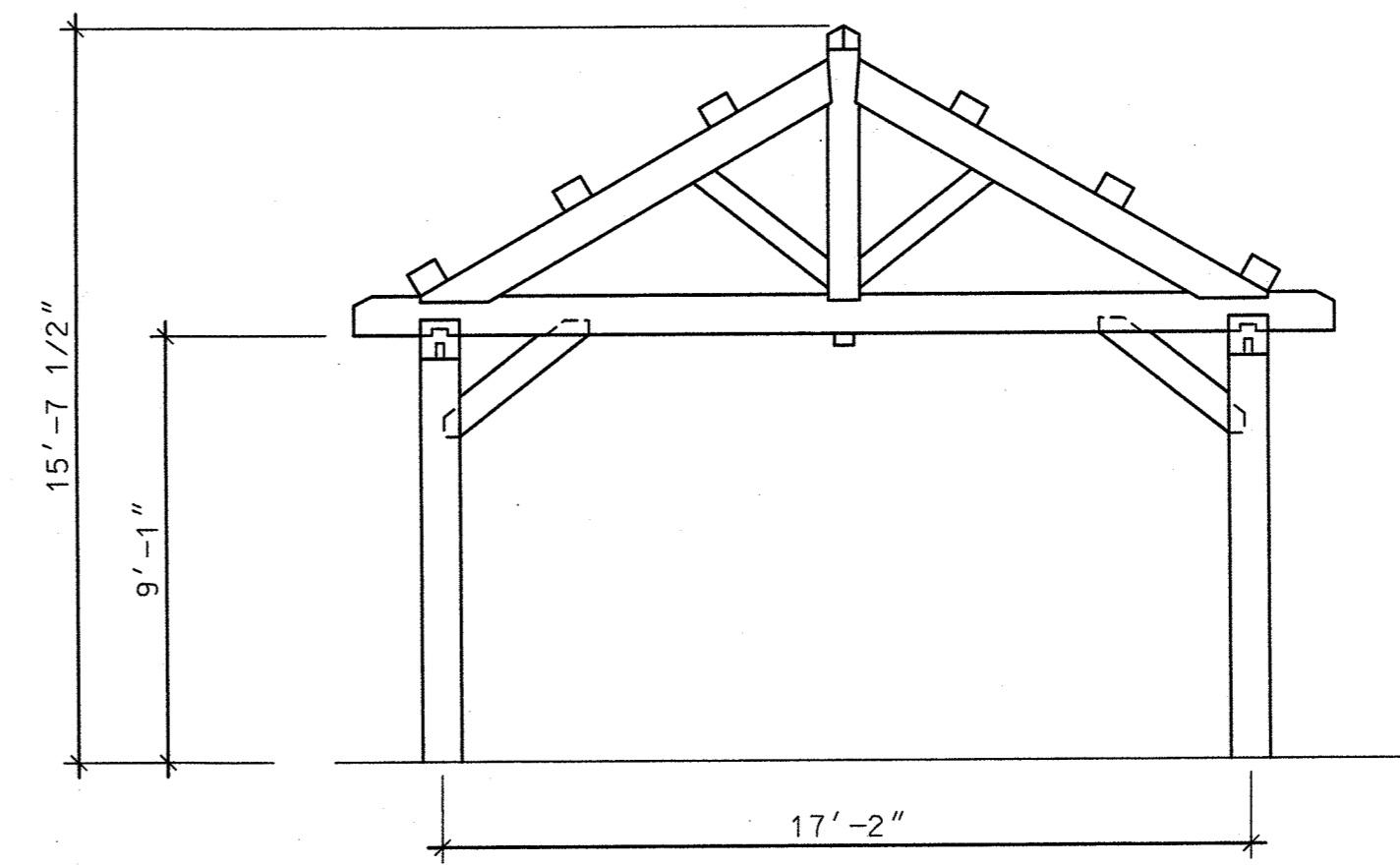
① ENLARGED SITE PLAN/ GONDOLA LOCATION  
SCALE: 1/8" = 1'-0"



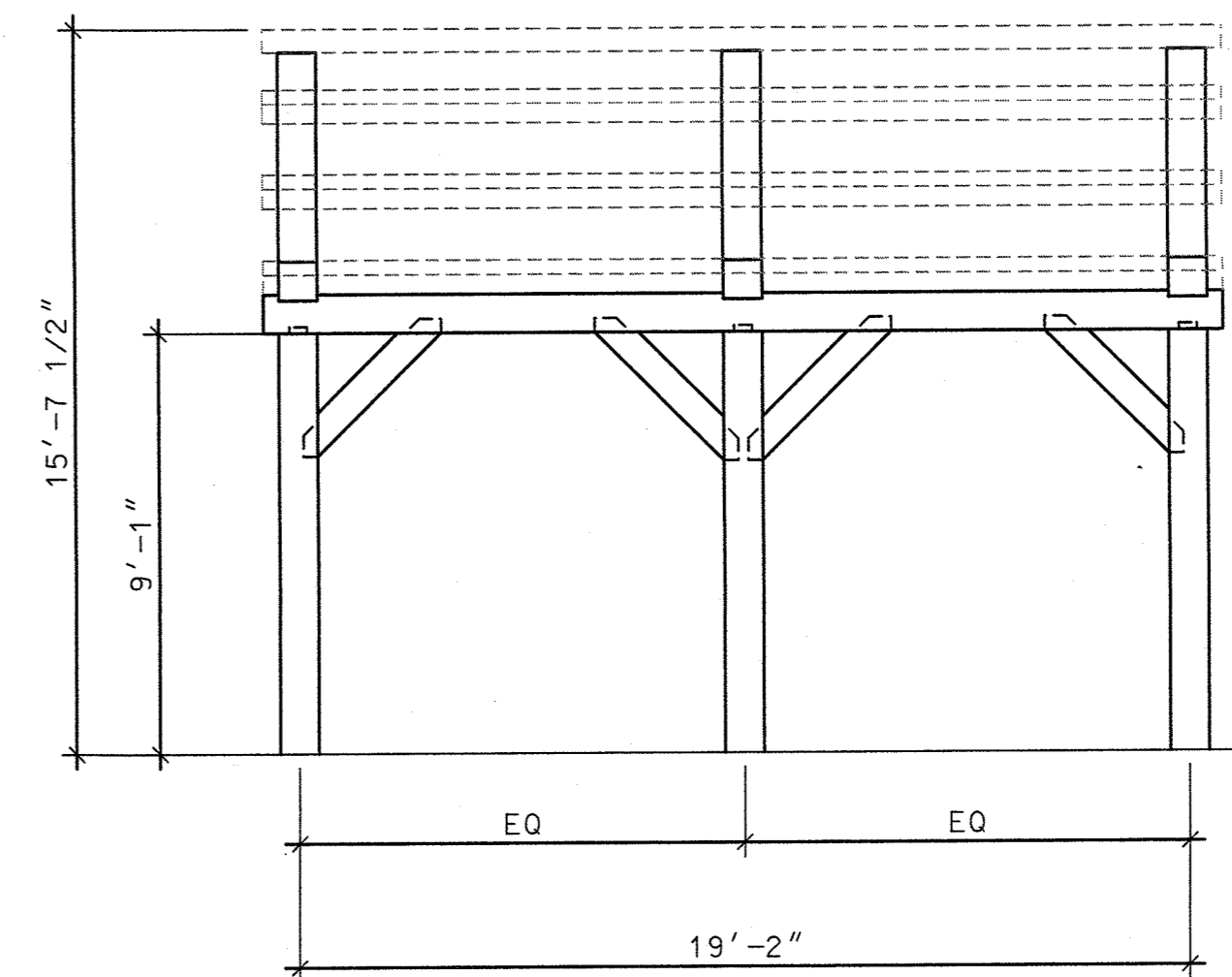
② GONDOLA SECTION  
SCALE: 1/4" = 1'-0"



③ GONDOLA FOUNDATION PLAN  
SCALE: 1/8" = 1'-0"



④ GONDOLA ELEVATION  
SCALE: 1/4" = 1'-0"



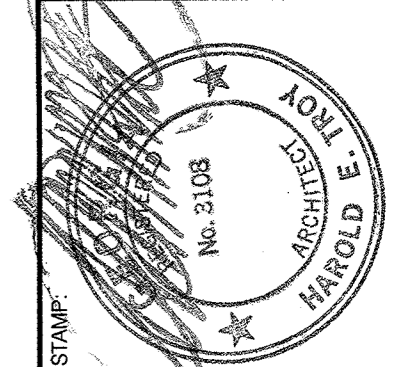
⑤ GONDOLA ELEVATION  
SCALE: 1/4" = 1'-0"

**herring troy associates, pc**  
 3565 Piedmont Road, NE | 3 Piedmont Center, Suite 205 | Atlanta, GA 30305 | 404 233 3533 | Fax 404 261 6788

REVISIONS	NO.	DATE	COMMENTS

DRAWING TITLE: **Gondola for 3226**  
 PROJECT: **3226 Roswell Road NW Atlanta, GA 30305**

PROJECT: **Sara Weinberger**  
 CONTRACT DOCUMENTS



JOB NUMBER: 568 176 12  
 DATE: 24 SEPT 2012  
 SCALE: AS NOTED  
 DRAWN BY: TLF /HET  
 REVIEW & APPROVAL:  Review & Approval  
 NOT RELEASED FOR CONSTRUCTION:  Not Released for Construction  
 RELEASED FOR CONSTRUCTION:  Released for Construction  
 DRAWING NUMBER: **A-1**

**BUILDING CODES**

-International Building Code (ICC) -2006 Edition with 2007, 2009 & 2010 Georgia Amendments  
 -International Mechanical Code (IMC) - 2006 Edition with 2007, 2008, 2010 & 2011 Georgia Amendments  
 -International Fuel Gas Code (IFGC) - 2006 Edition with 2007, 2008, 2009, 2010 & 2012 Georgia Amendments  
 -International Plumbing Code (IPC) - 2006 Edition with 2007, 2008, 2009, 2010, 2011, & 2012 Georgia Amendments  
 -National Electrical Code (NFPA) - 2011 Edition  
 -International Energy Conservation Code (IECC) - 2009 Edition with 2011 & 2012 Georgia Supplements and Amendments  
 -2000 Edition of the NFPA Codes and Standards as adopted and modified by the State Fire Marshal Title 25 OCGA, and 2010 ADA Standards for Accessible Design  
 -International Fire Code (IFC) - 2006 Edition with 2007 Georgia Amendments  
 -2002 NFPA 13 - Sprinklers  
 -2002 NFPA 72 - Fire Alarms  
 -2000 Edition National Fire Protection Association life safety code NFPA 101  
 -NFPA Standards as listed in the Rules and Regulations of the Safety Fire Commissioner Chapter 120-3-3.  
 -Exit doors shall not be subject to the use of a key or require special knowledge to operate per NFPA 101 Life Safety Code, Chapter 7, Sec. 7.2.1.5.1, 2000 Edition.  
 -Combustible interior finish products shall be provided per the requirements of the respective occupancy chapter of the NFPA 101 Life Safety Code 2000 Edition. Provide verification at the time of final inspection the products comply with the requirements.

**GENERAL NOTES**

-Contractor shall notify the architect immediately of material discrepancies found on the drawings or any existing conditions found on the site which conflict with conditions as shown in the contract documents.

Note Well: -Unless attached herewith or notified by architect otherwise, all MEP and structural drawings required by governing jurisdiction shall be "design-build" and stamped by the appropriate subcontractor.

**ABBREVIATIONS**

AFF.....Above Finished Floor	FLUOR.....Fluorescent (light fixtures)
CLG.....Ceiling	GL.....Glass
CFM.....Cubic Feet per Minute	HVAC.....Heating, Ventilating, & Air Conditioning
CONST.....Construction	PT.....Paint
DEMO.....Demolition	Ø.....Phase
DRFR.....Door/Door Frame	RA.....Return Air
EXIST'G.....Existing	RR.....Remove and/or Relocate
EX FAN.....Exhaust Fan	REQ'D.....Required
ELECTELE.....Electrical/Telephone	UON.....Unless Otherwise Noted
F&I.....Furnish and Install	VCT.....Vinyl Composition Tile
FEX.....Fire Extinguisher	WVC.....Vinyl Wallcovering

**CONTACTS**

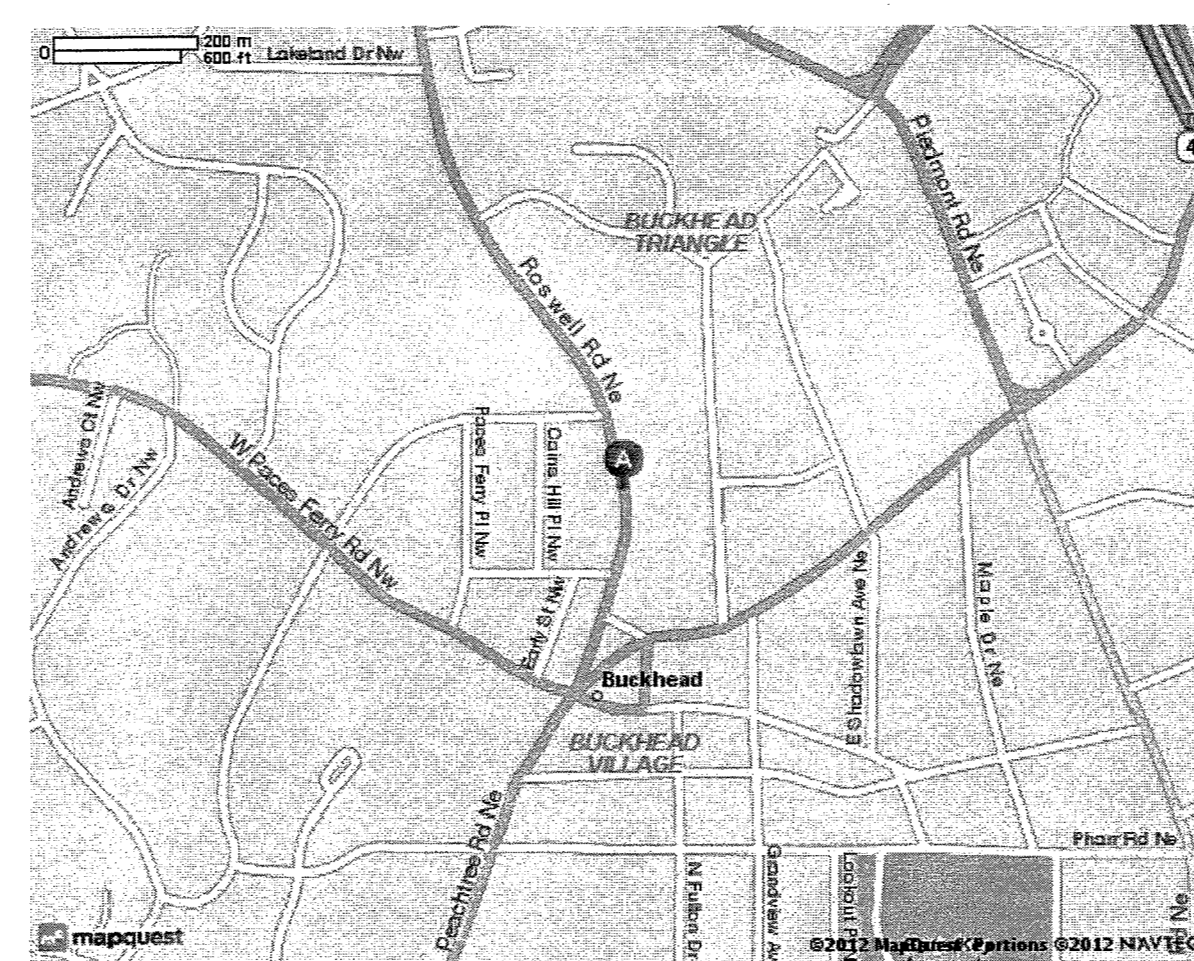
**ARCHITECT**  
 Herring Troy Assoc., P.C.  
 3565 Piedmont Rd. N.E.  
 3 Piedmont Center, Suite 205  
 Atlanta, GA 30305  
 (404) 233-3533  
 Contact: Tom Ford

**CONTRACTOR**

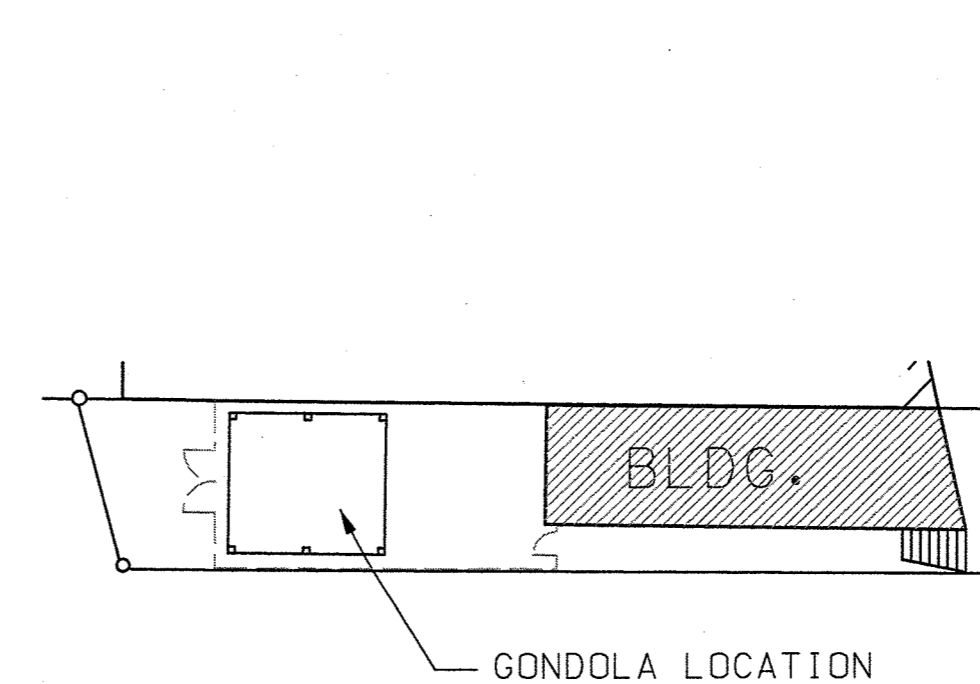
**PROJECT CRITERIA**

Address: 3226 Roswell Road  
 Occupancy Classification: Business  
 Type of Construction: IV  
 Sprinklered: No  
 Fire Alarm: No  
 1 Hour Protected: No  
 Seismic Use Group: Group 1  
 Seismic Design Category: C

**VICINITY MAP**



**LOCATION PLAN**



**DRAWING INDEX**

- C-1 Cover Sheet
- SITE PLAN Site Plan
- A-1 Site Plan, Foundation Plan, and Section
- S-1 Foundation, Floor, and Roof Framing Plan
- S-2 Sections and Details

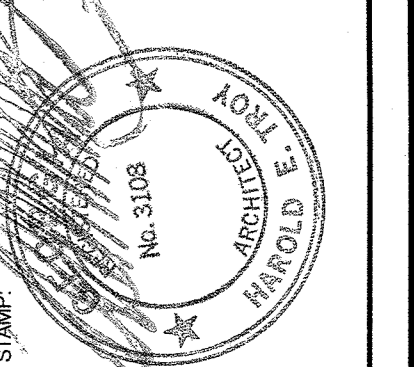
**herring troy associates, pc**

3565 Piedmont Road, NE | 3 Piedmont Center, Suite 205 | Atlanta, GA 30305 | 404 233 3533 | Fax 404 261 5768

REVISIONS	NO	DATE	COMMENTS

DRAWING TITLE: Gondola for 3226  
 PROJECT: 3226 Roswell Road NW Atlanta, GA 30305

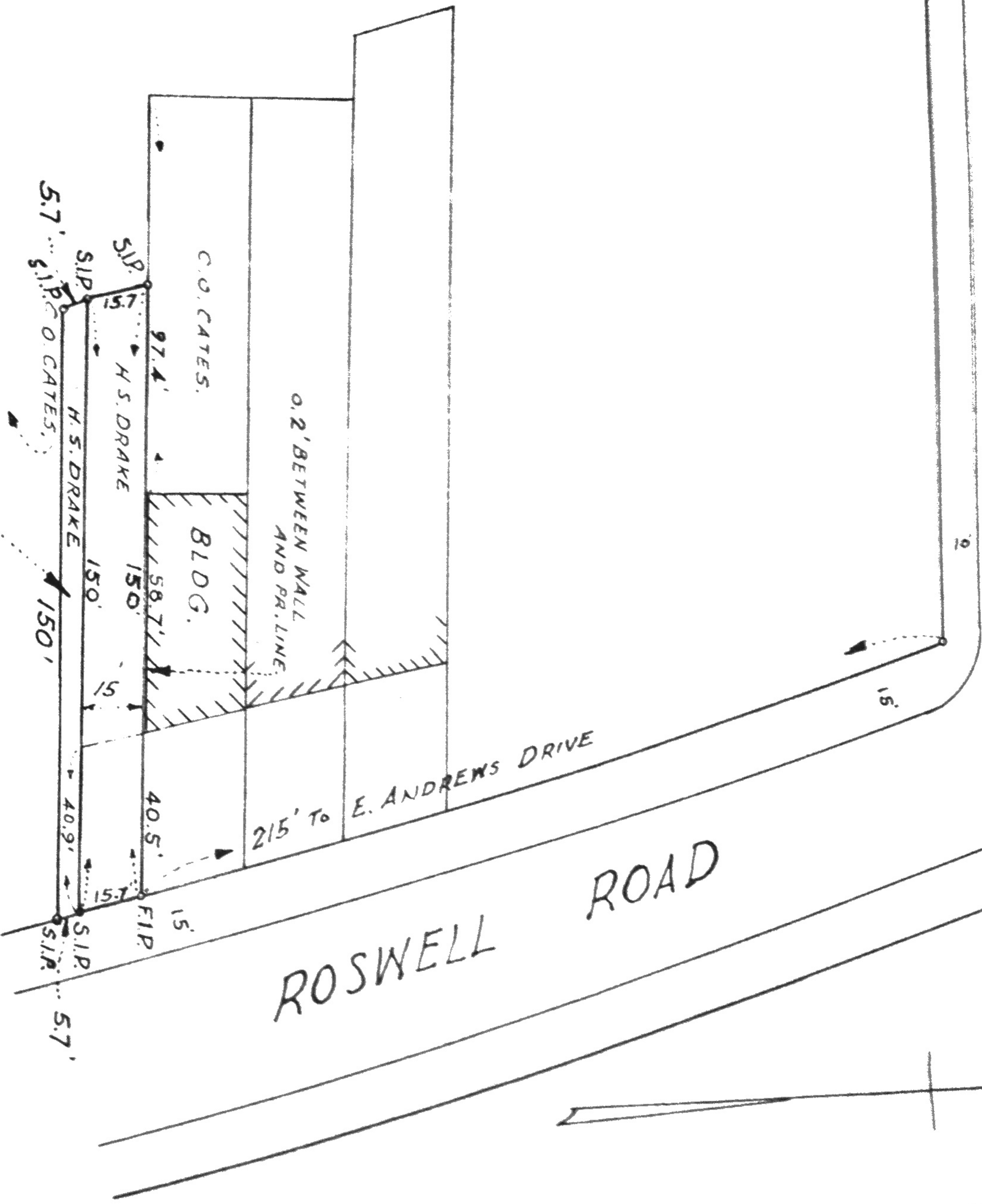
PROJECT: Sara Weinberger  
 CONTRACT DOCUMENTS



SCALE: N/A  
 DATE: 24-SEPT-2012  
 DRAWING NUMBER: C-1

REVIEW & APPROVAL FOR CONSTRUCTION:  Not Released for Construction,  Released for Construction

E. ANDREWS DRIVE



REVISED MARCH 5, 1952  
TO SHOW ADDITIONAL  
PROPERTY

SURVEY AND PLAT  
PROPERTY OF  
H. S. DRAKE

LAND LOT 99 - 17th DISTRICT

FULTON COUNTY, GEORGIA.



I certify that this plat is correct and  
a true representation of the conditions  
on this property.

*J. R. Bracewell*

Georgia Registered Surveyor No. 25  
Member of Georgia Board of  
Registered Land Surveyors

**J. R. BRACEWELL AND ASSOCIATES, INC.**

Registered Professional Engineers  
BUCKHEAD THEATRE BUILDING  
ATLANTA, GEORGIA

Surveyed BY J.L.S.	February 12, 1952
Drawn BY G.W.N.	Job No. 5219
SCALE 1" = 50'	