

Sports Facilities + Community Greens Vision

The Buckhead Collection

Sports Facilities | Community Greens Vision + Guiding Principles

The Buckhead Collection proposes to maximize access to existing sports facilities to meet the tournament and non-tournament recreational demands of residents. The demand for organized sports is addressed by continuing to strengthen relationships with existing school and churches within the study area that allow use of their sports facilities.

Additionally the Buckhead Collection proposes to address the practice needs of the community through Multi-Purpose Community Greens that meet the non-tournament recreational and sports related demands of the community while providing multi-purpose community gathering space.



Example of a Community Green

Tournament Field Characteristics + Opportunities



- 1 - 2 Acres
- Formal + Programmed Field
- Medium to High Maintenance
- Restrictive Use
- Potentially Contribute to Negative Impact of Property Values



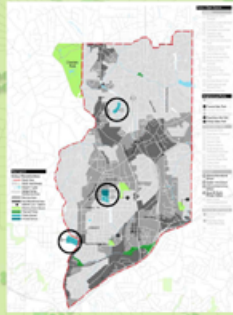
Non-Tournament Field Characteristics + Opportunities



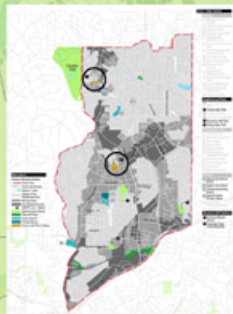
- 1 - 2 Acres
- Informal + Open Lawn Area
- Low to Medium Maintenance
- Multiple Uses
 - Sports Practice
 - Informal Pick-Up Games
 - Neighborhood Gatherings
 - Stormwater Management
- Potentially Contribute to Positive Increase of Property Values



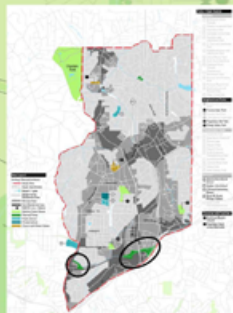
Analysis



Schools with Existing Sports Facilities

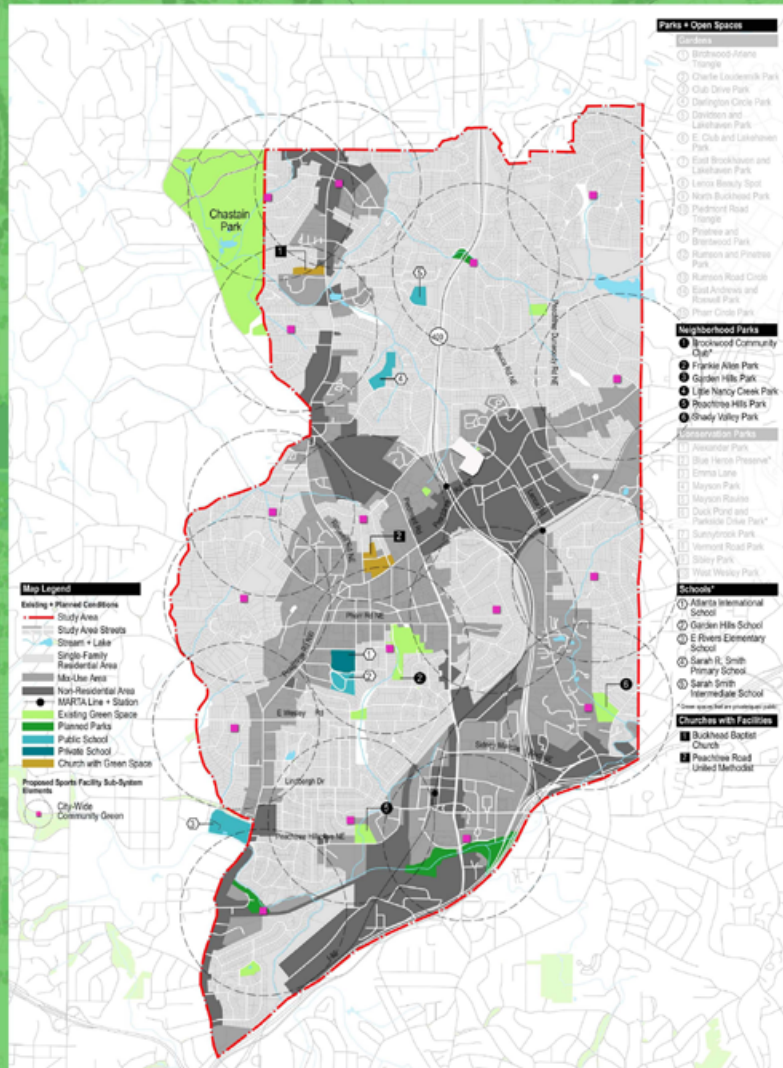


Churches with Existing Sports Facilities



Planned Beltline Parks with Opportunities for the Development of Sports Facilities

The Buckhead Collection Sports Facilities + Community Greens Vision



Proposed Community Park Facility Components