

Buckhead Collection Vision

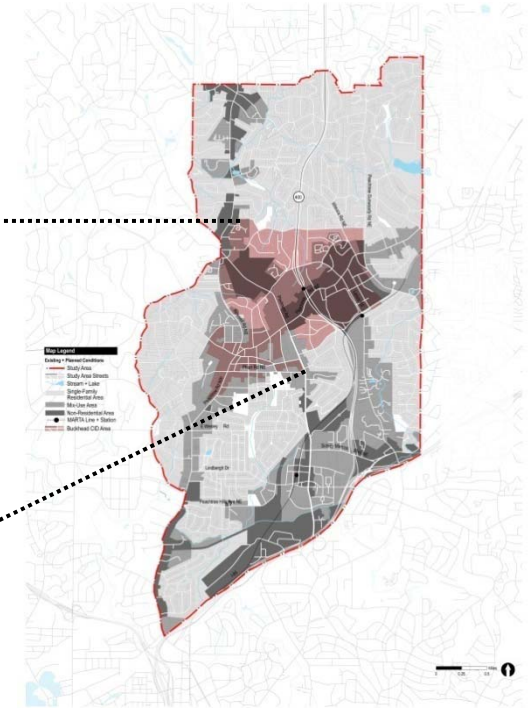
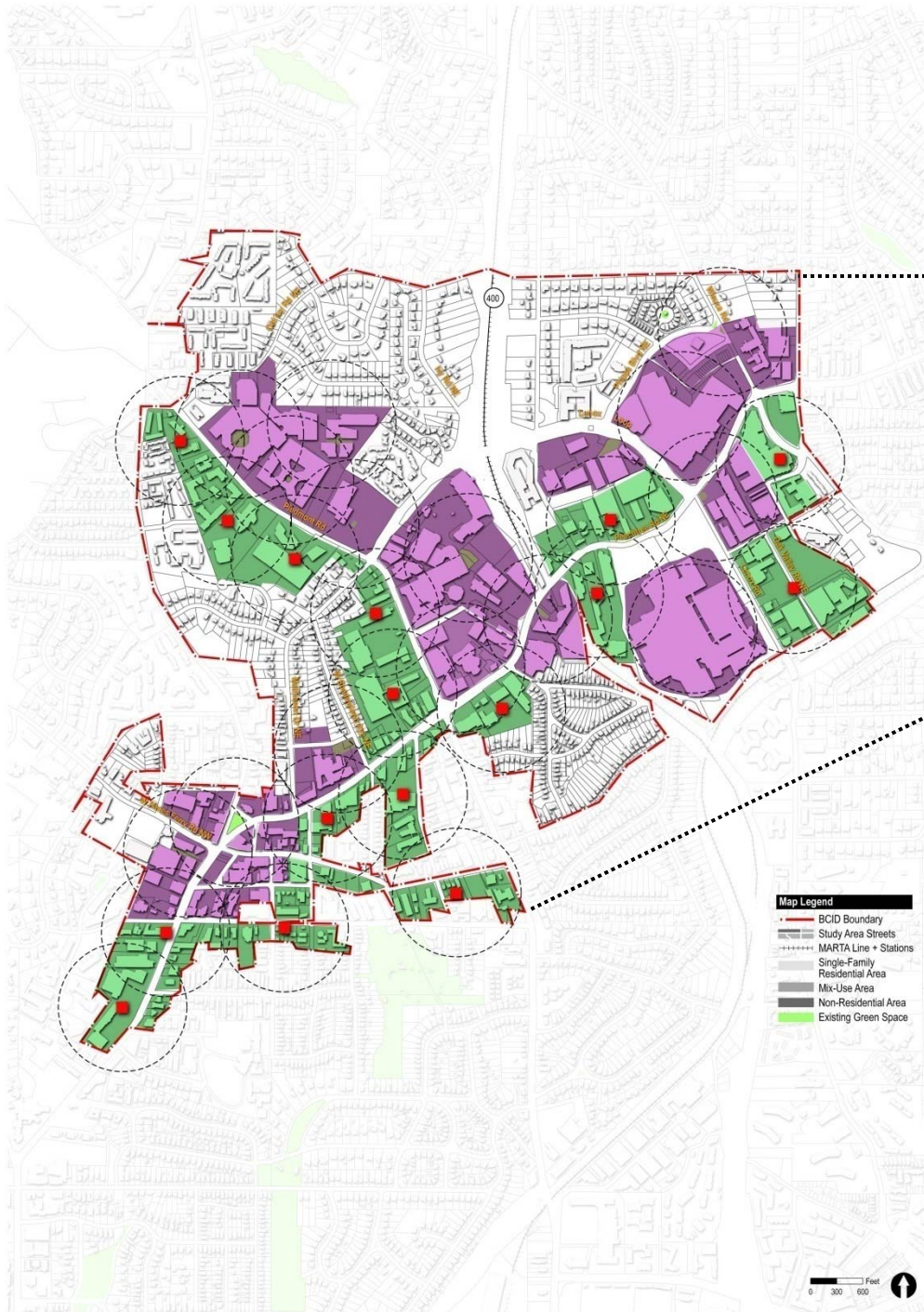
The **Buckhead Collection** is an interconnected network of parks, trails and green spaces serving the social, economic, mobility, and environmental needs of Buckhead residents, workers and visitors. Each element of the Collection will be planned and designed to meet the following objectives:

- Continue to make **Buckhead** one of the **most desirable places** in the world to **live, work and play**
- Provide a network of trails, bikeways and sidewalks to provide opportunities for **alternative modes of transportation**
- Provide residents, workers and visitors with access to a **meaningful green space** within a **convenient distance** from their home and business
- Provide **adequate athletic fields and recreation facilities** to meet the needs of Buckhead
- **Maximize real estate values** through **proximity to green space**
- Provide **opportunities for the community to gather** for festivals, performances, special events and other cultural activities
- Provide opportunities for **public art, historic preservation** and **interpretation, stormwater treatment** and **environmental protection** throughout the system



NPU-B + **AECOM**

Buckhead CID | Plazas



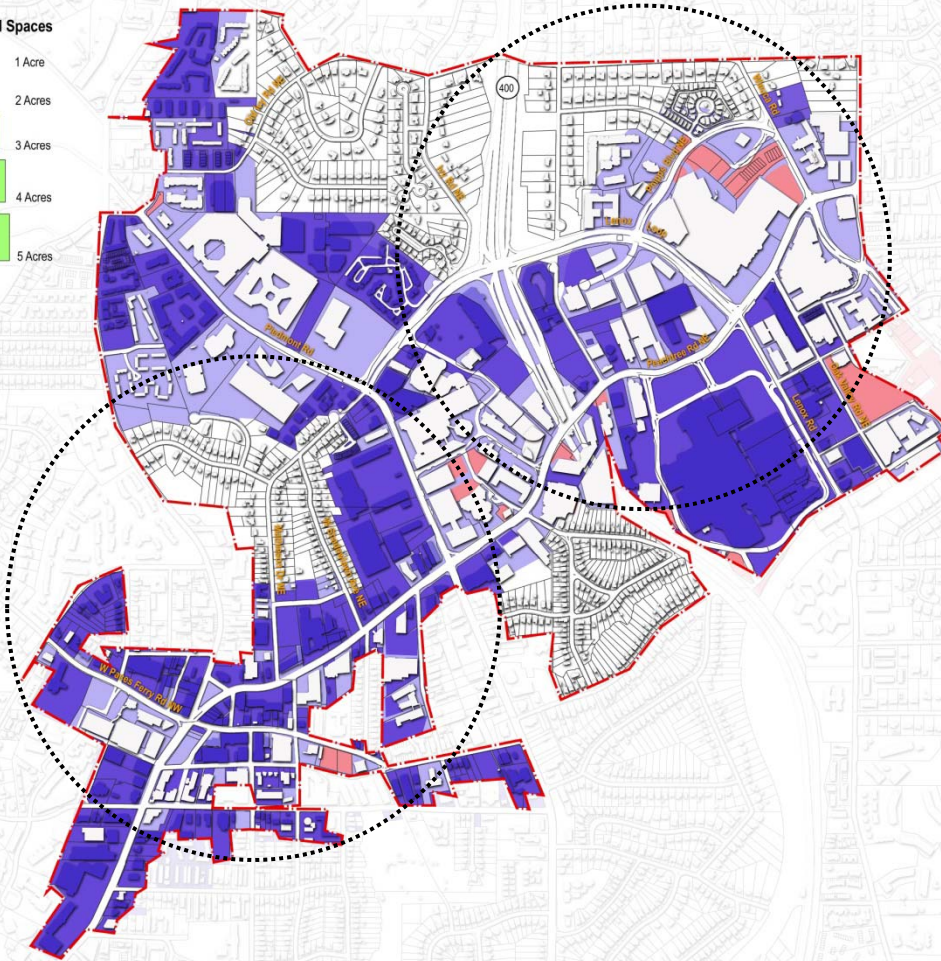
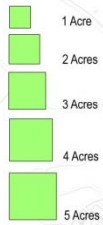
Plaza



NPU-B + AECOM

Central Gathering Space | Location Criteria

Scaled Spaces



Density + Diversity

The proposed Central Gathering Spaces should be located near a population of sufficient density and diversity to use the park throughout the day and into the evening; office workers, residents, visitors, children, laborers, retirees, etc

Access

Access to the park from adjoining multi-story/multi-family residences or business, or from mass transit or parking is walkable (800') and perceived as safe

Visibility + Activity

Pedestrian access and visibility into the park must be provided from at least two public streets adjoining the park, and ideally from adjoining active uses facing the park such as shops, restaurants or civic spaces

Size

The park must be of sufficient size to comfortably accommodate the planned uses; this can be as small as 1 acre for an intensively used and programmed plaza (such as Pioneer Courthouse Square in Portland), or a public green that supports occasional large public gatherings (such as in Savannah), or a site three to five acres in size to accommodate a variety of parks spaces and uses (such as Bryant Park and Buena Vista Gardens)



NPU-B + **AECOM**

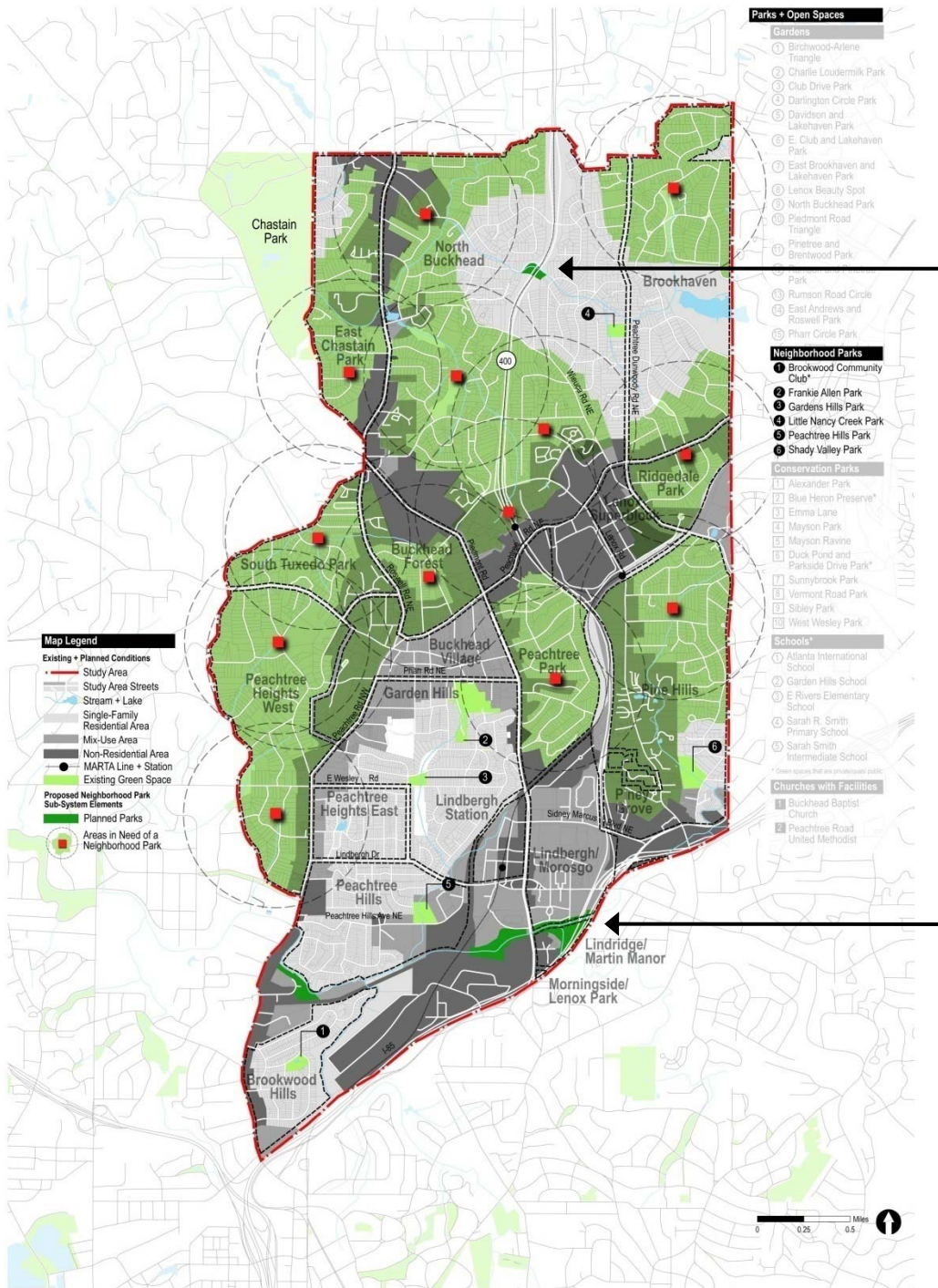
Proposed Neighborhood Parks



Mountain Way Park

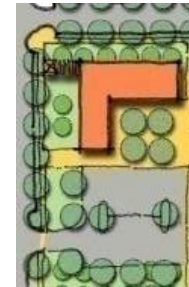
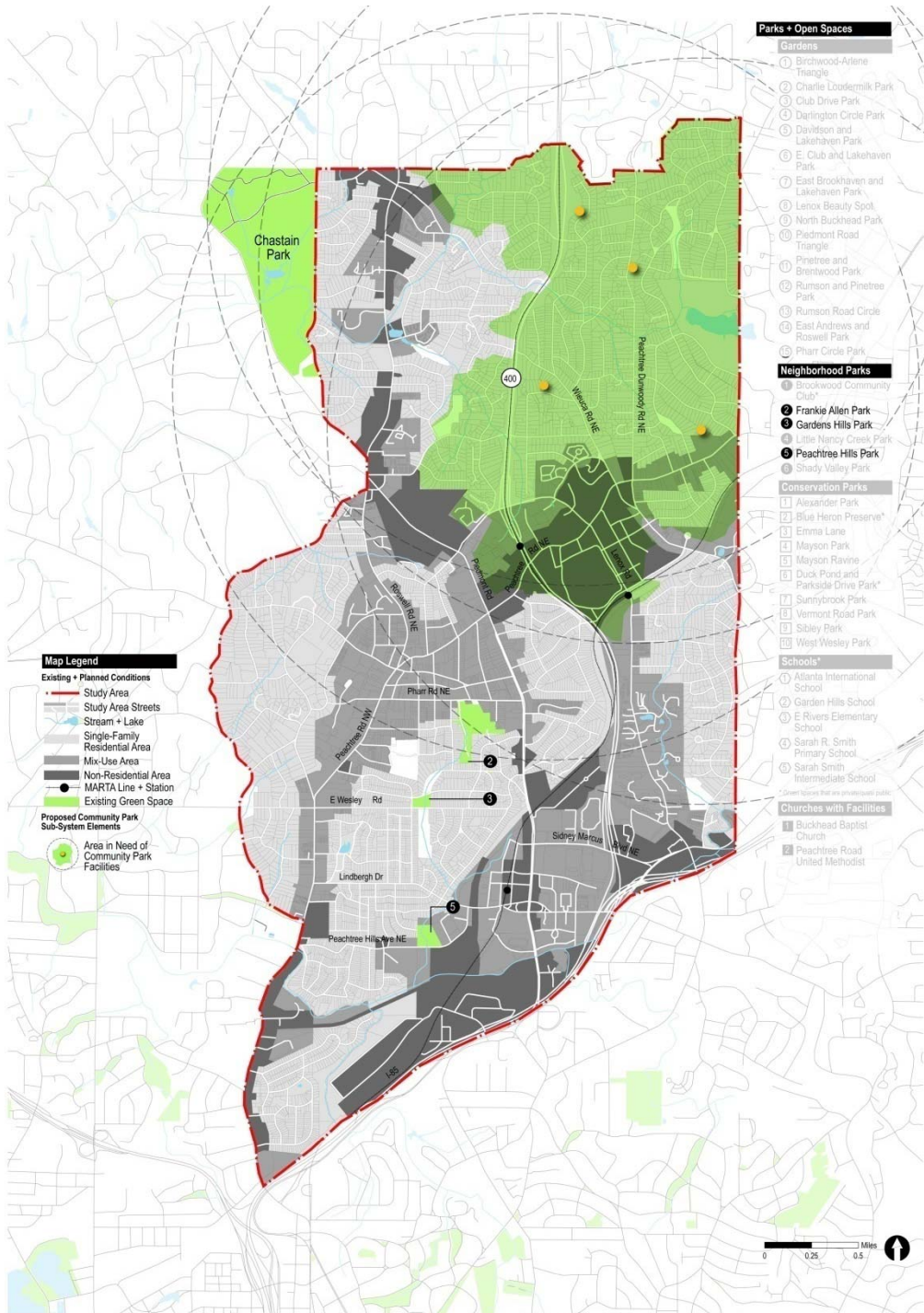


Confluence Park



NPU-B + **AECOM**

Community Park Facility Components



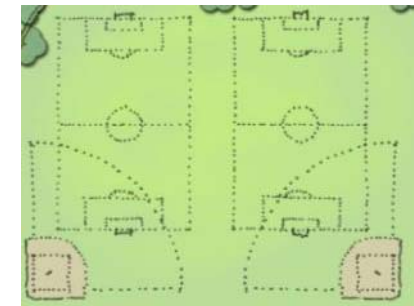
10,000 – 30,000
sq.ft. Community
Center =
1.5 – 3 Acres



Basketball/
Tennis Courts =
0.5 – 1 Acre



Playground or
Splash Play Area =
0.25 – 0.5 Acres

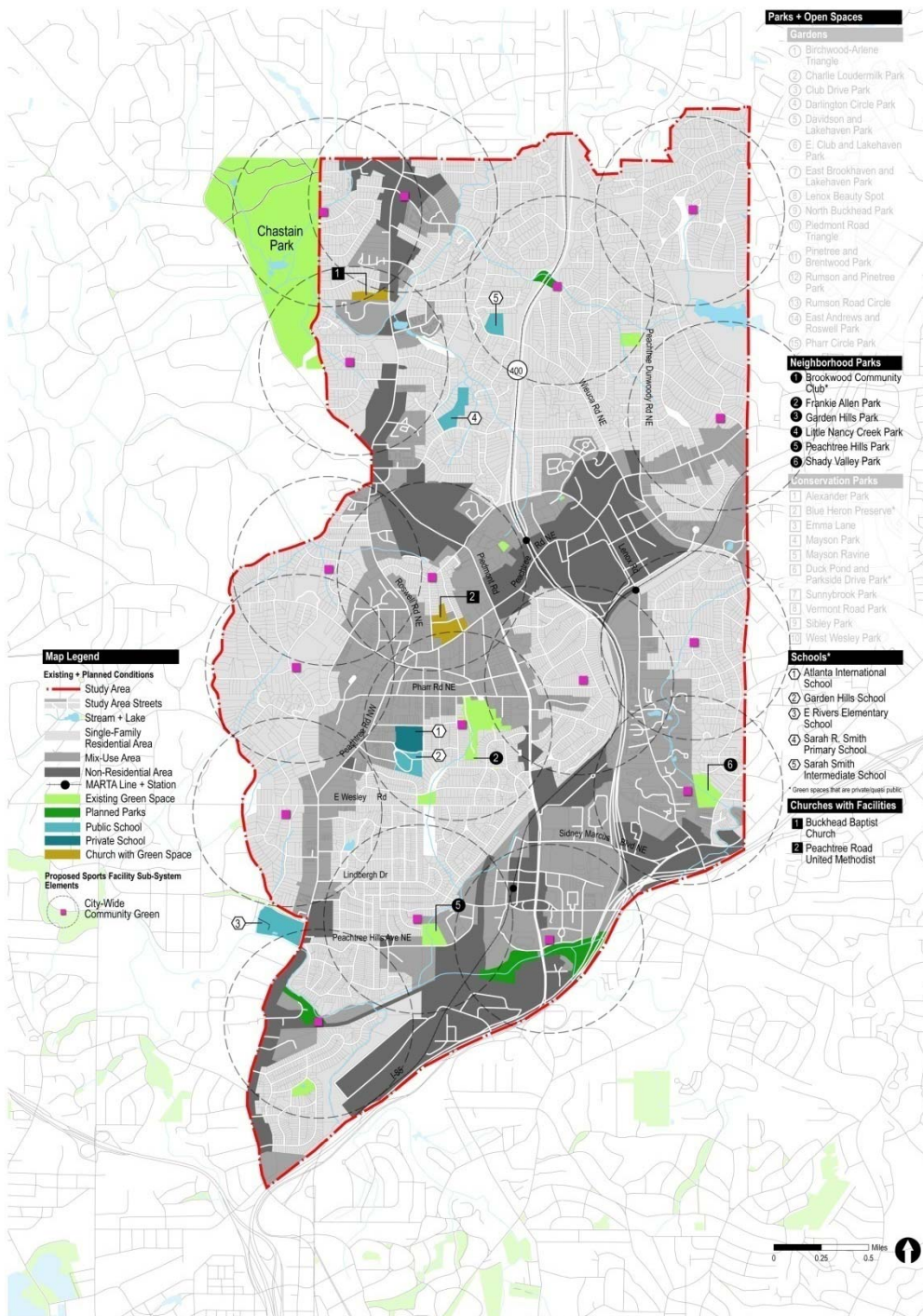


Multi-Purpose
Fields/Open Space =
1.5 - 8 Acres

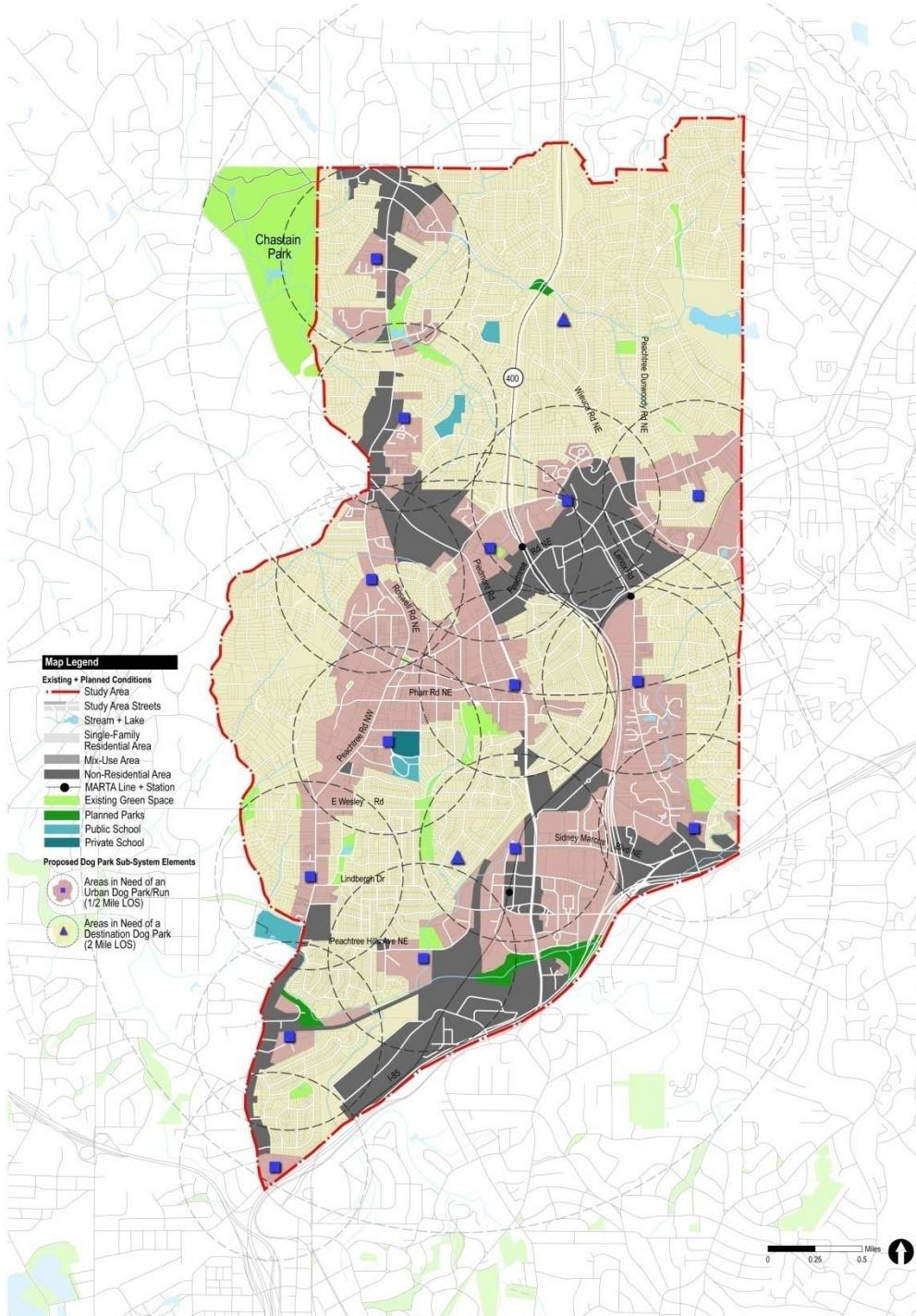
Proposed Community Greens



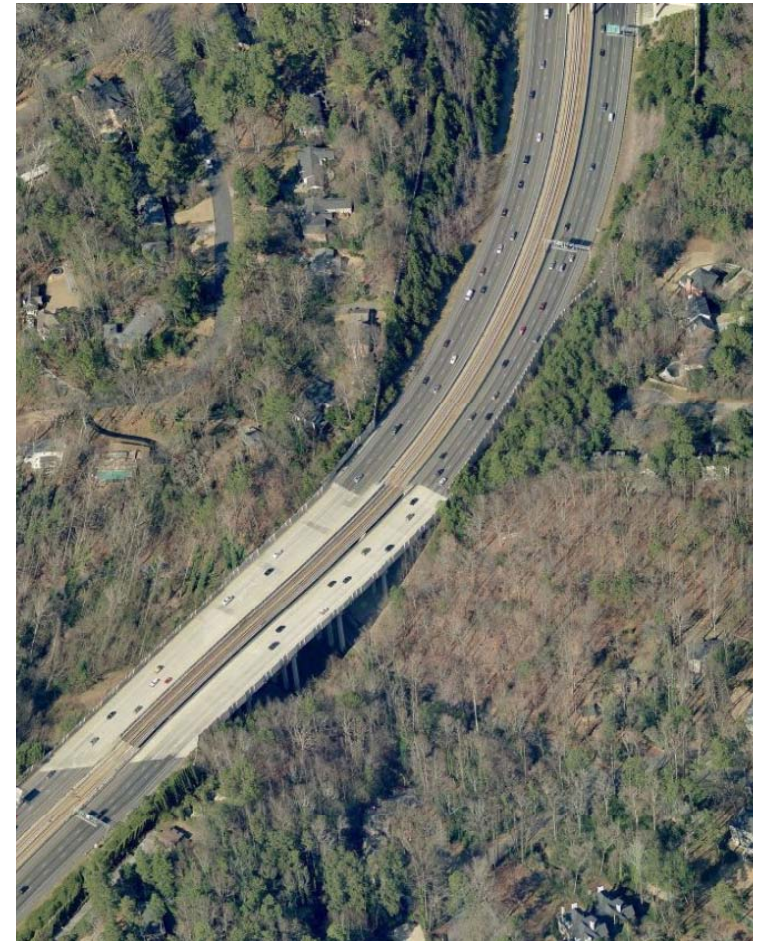
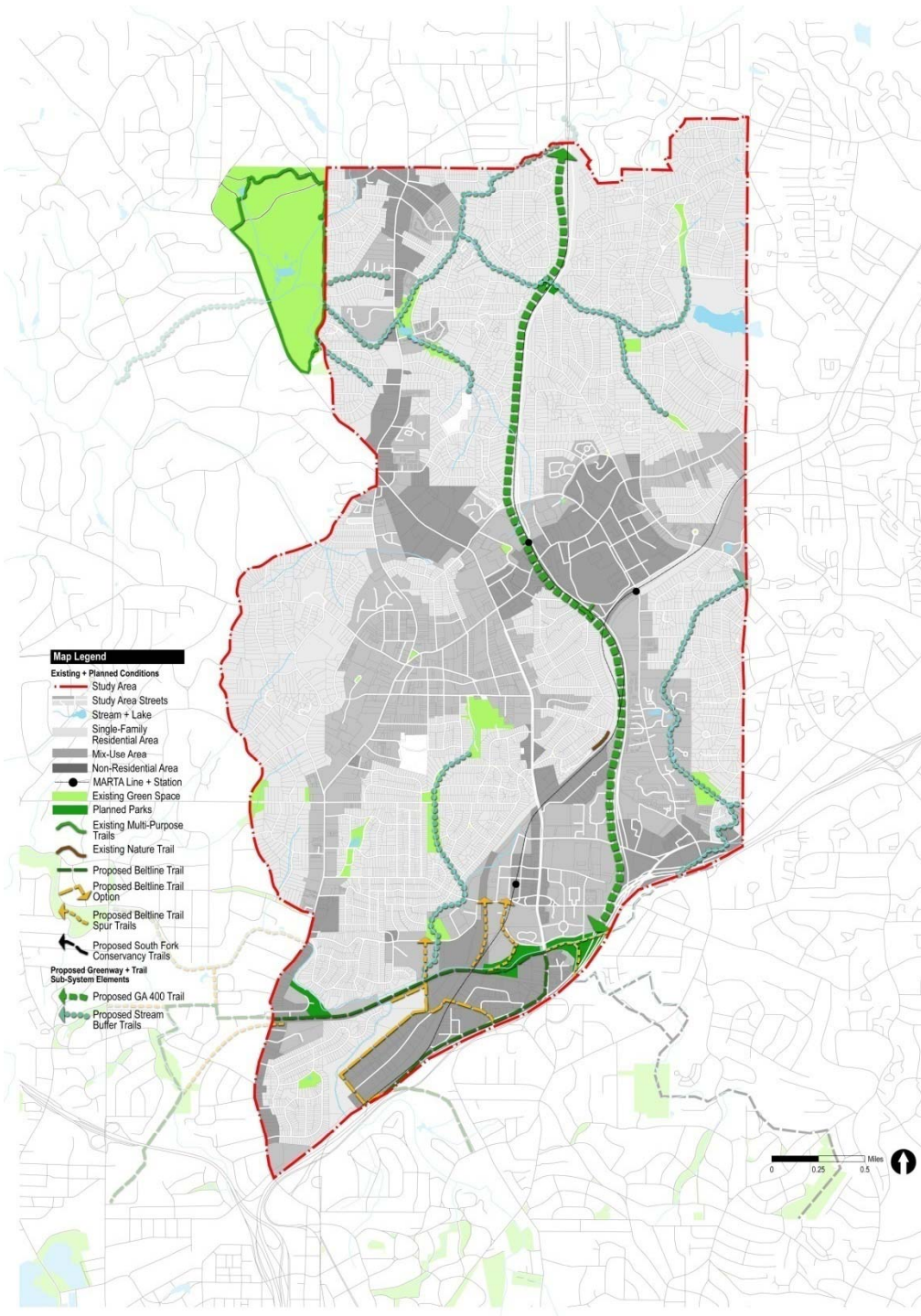
- 17 Community Greens (1 – 2 acres) to be developed throughout the community as
 - Stand Alone Facilities
 - Part of Neighborhood Park
 - Part of Community Facilities



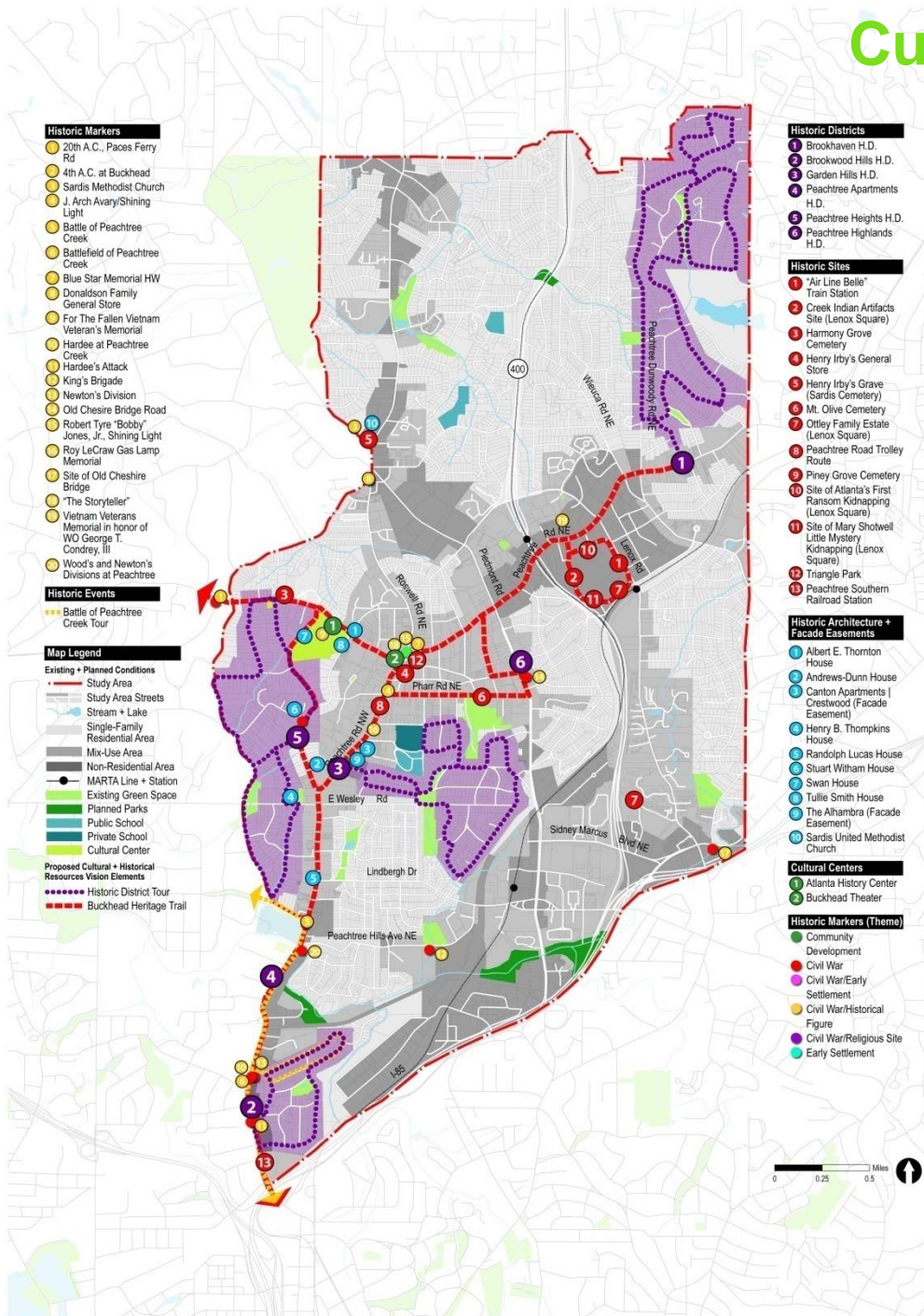
Dog Parks



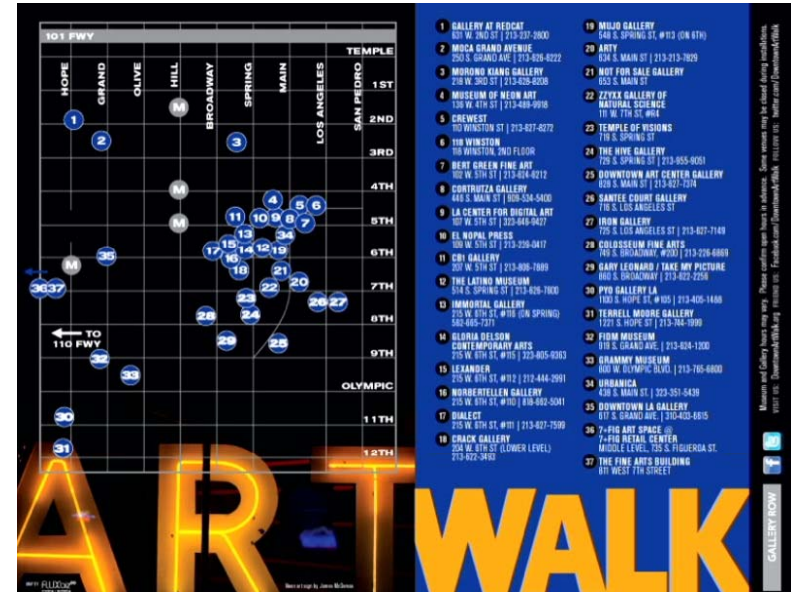
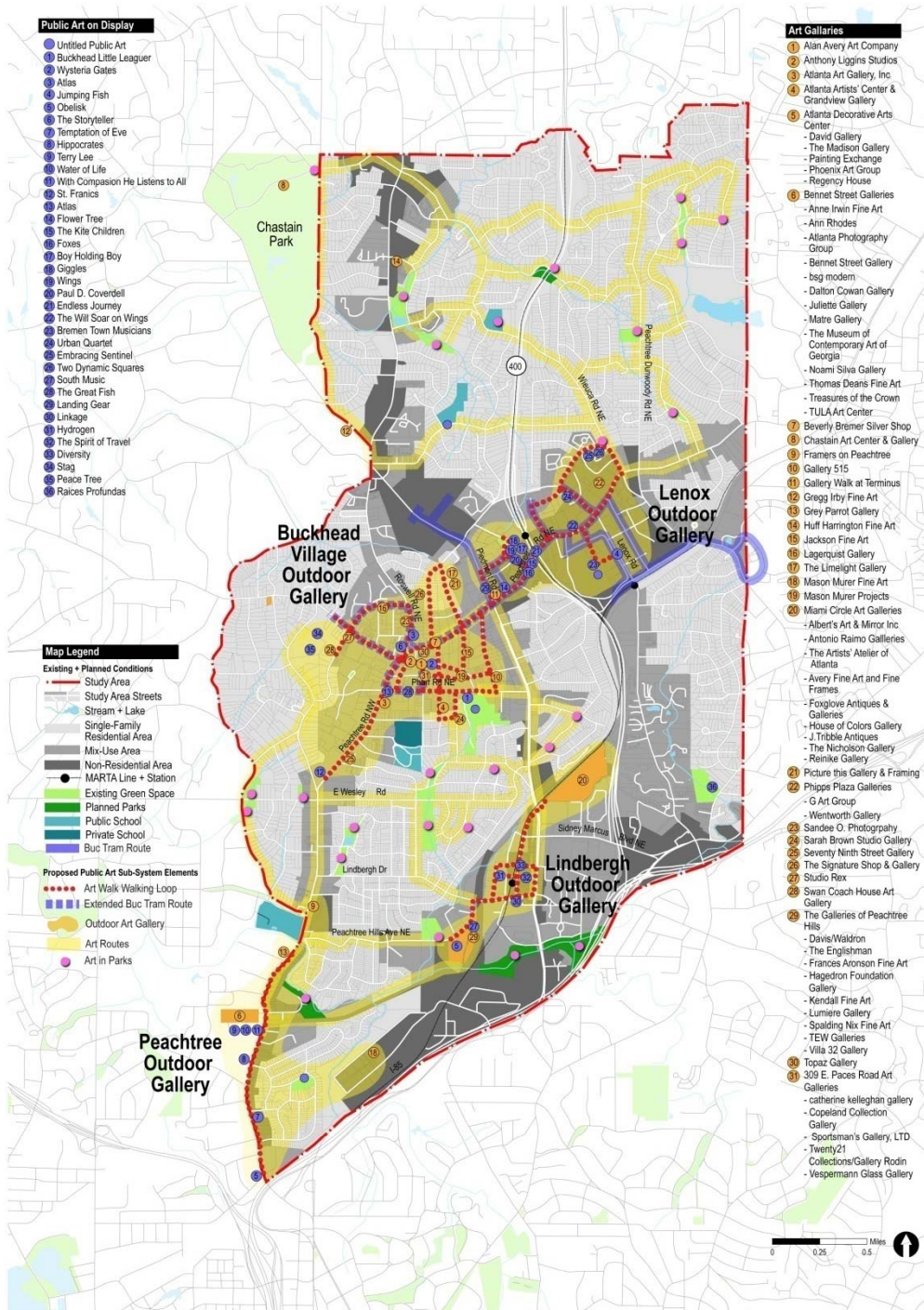
Greenways + Trails



Cultural + Historical Resources



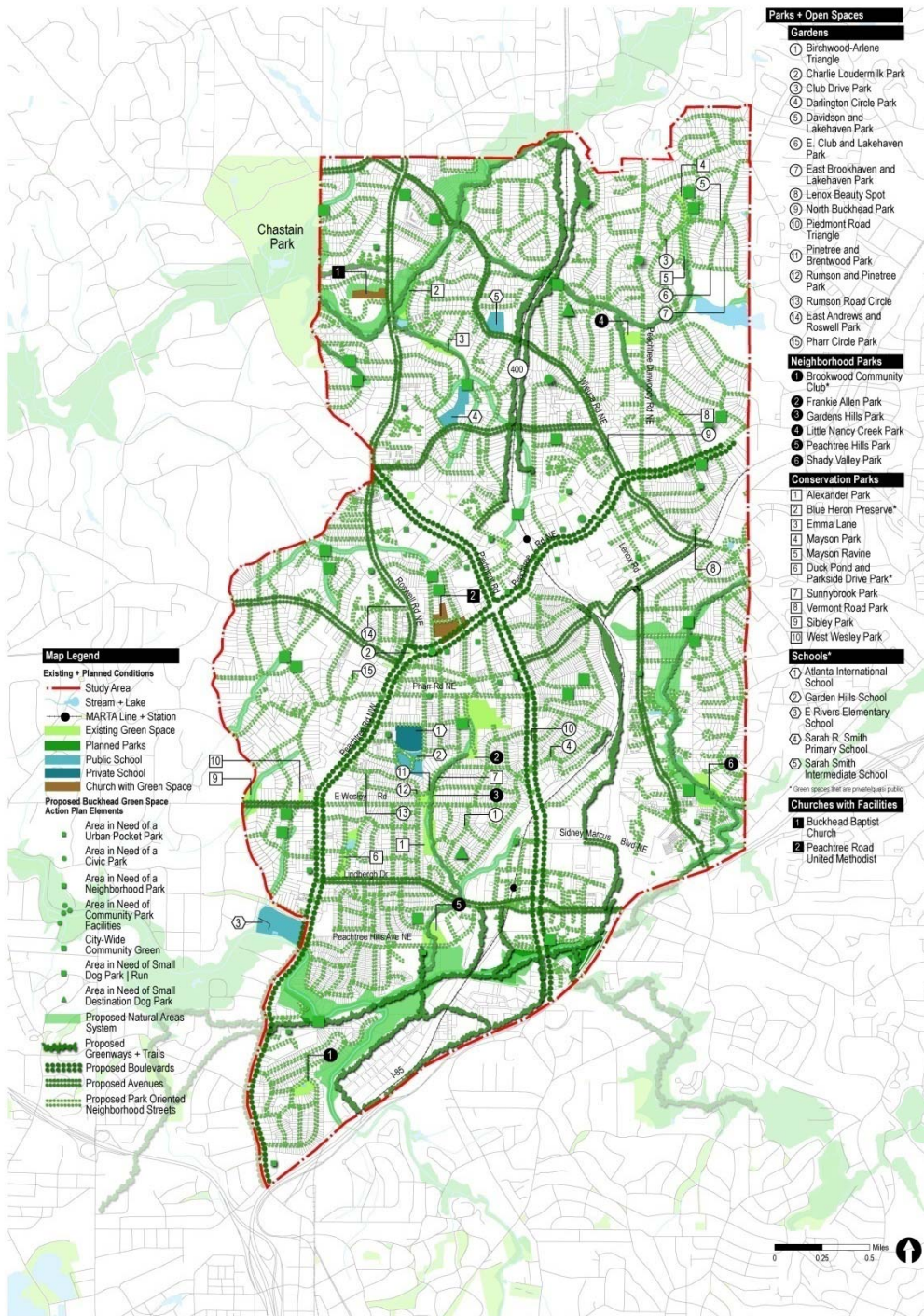
The Buckhead Outdoor Art Collection



NPU-B + AECOM

Buckhead Collection Vision

16 Plazas	+ 0.3 Acres
2 Central Gathering Spaces	+ 4 Acres
13 Neighborhood Parks	+ 19.5 Acres
3 Beltline Parks	+ 24 Acres
4 Comm Park Components	+ 3.5 Acres
17 Community Greens	+ 17 Acres
15 Dog Runs	+ 0.3 Acres
2 Destination Dog Parks	+ 2 Acres
Natural Areas	+ 9,300 Acres
Trails + Greenways	+ 36 Acres
Street + Sidewalk Improvements	+ 20 Miles
Total	+ 106.6 Acres



Summary of Opportunities to Meet Needs:

-  • Floodplain + Flood Prone Areas
-  • Land in Public Ownership
-  • Institutions with Green Space
-  • Underutilized Green Space
-  • Setback Green Space
-  • Parking Deck
-  • Vacant Land
-  • Planned Beltline Green Space
-  • Area of Potential Transition

