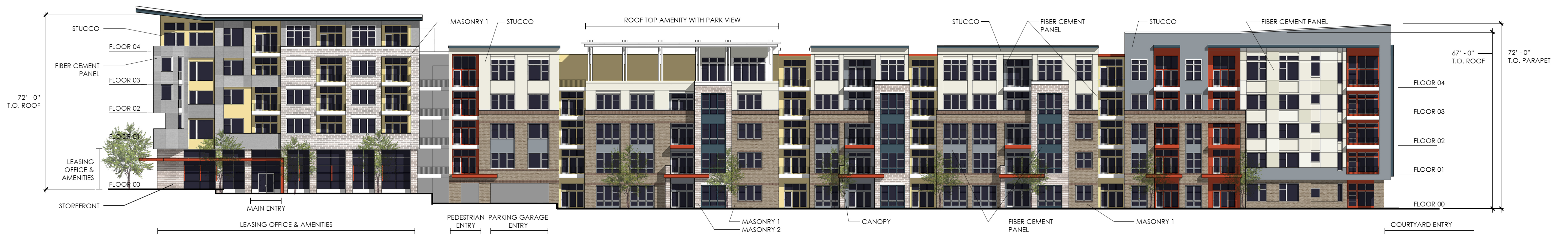




2 ROXBORO ROAD ELEVATION
SCALE: 1/16" = 1' - 0"



1 PARK DRIVE ELEVATION
SCALE: 1/16" = 1' - 0"



4 WRIGHT AVENUE ELEVATION
SCALE: 1/16" = 1' - 0"



3 EAST PACES ELEVATION
SCALE: 1/16" = 1' - 0"